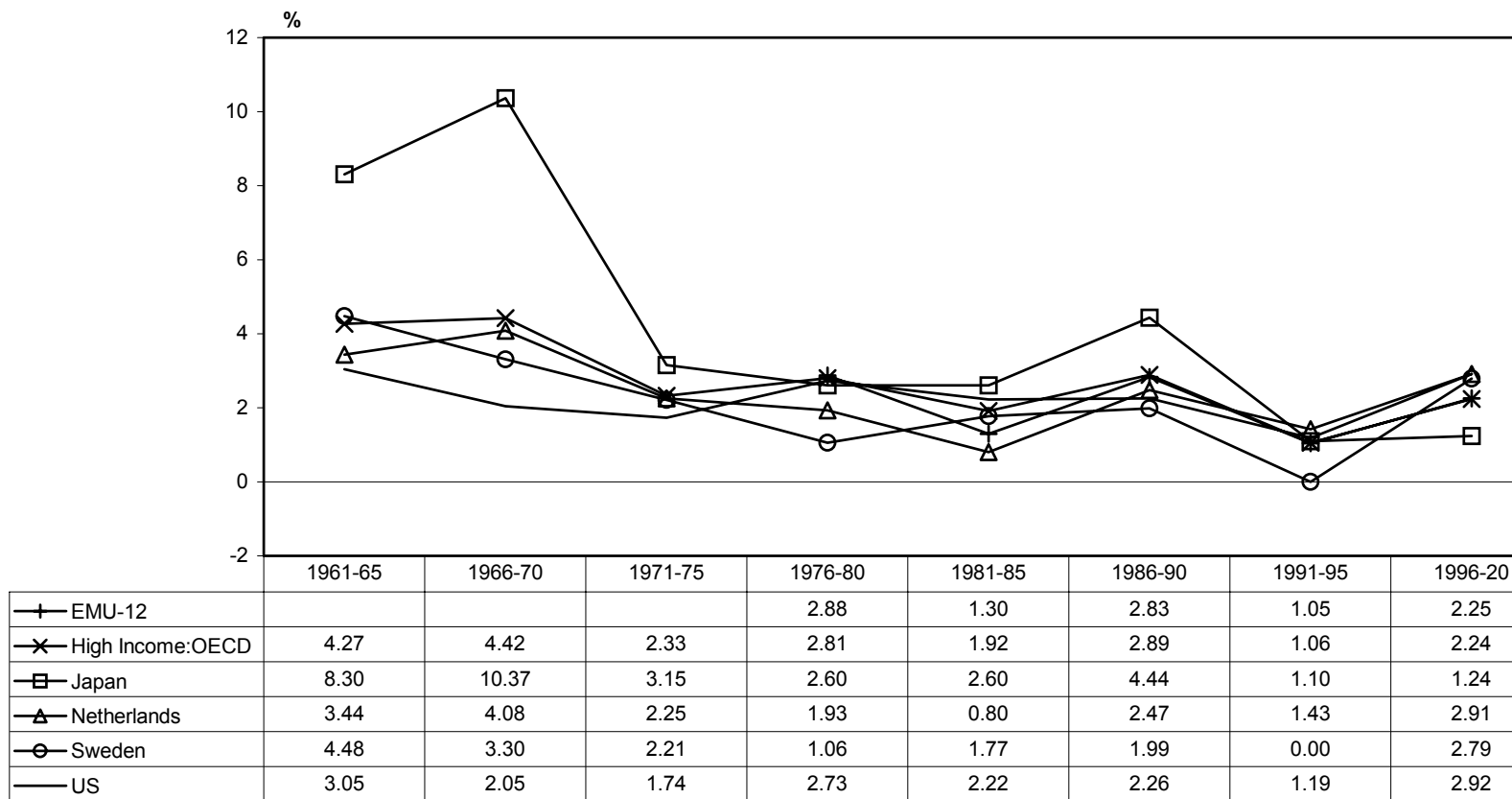
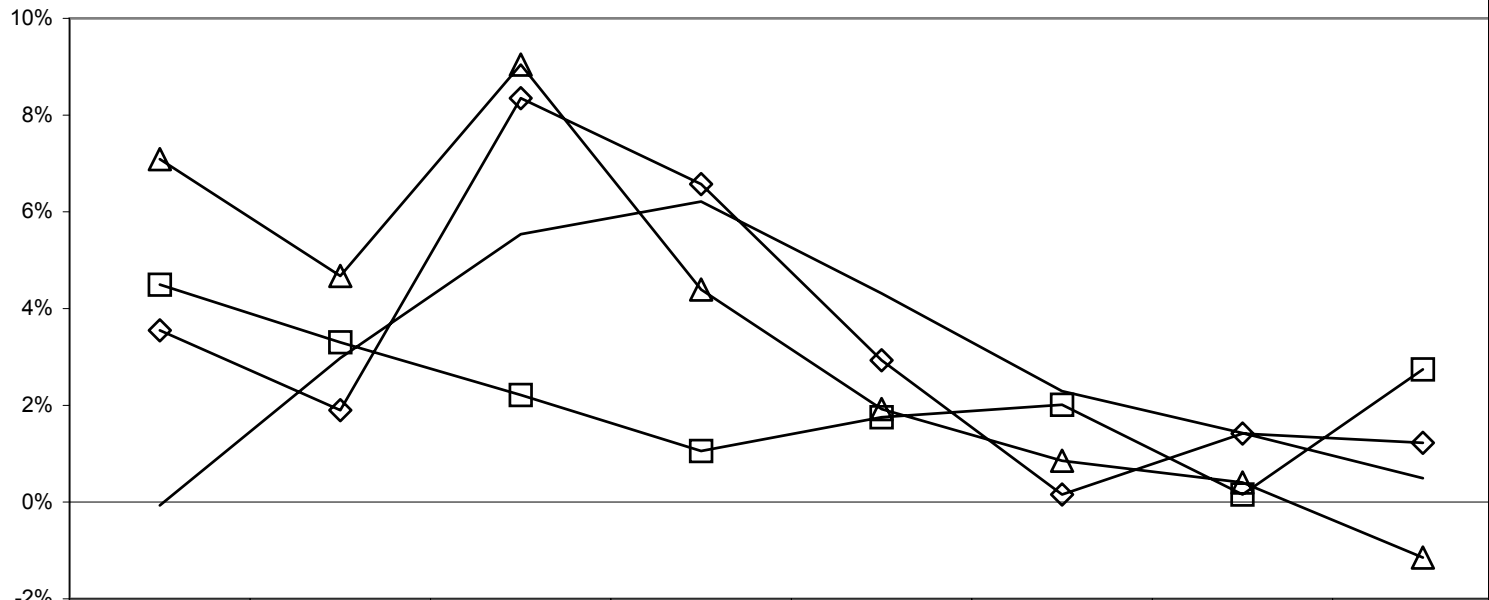


**Figure 1**  
Real GDP Per Capita: Average Annual Growth (1995 US\$)



Source: All calculations based on data series from the World Bank, *World Development Indicators*.  
Accessed via <http://devdata.worldbank.org/dataonline/>

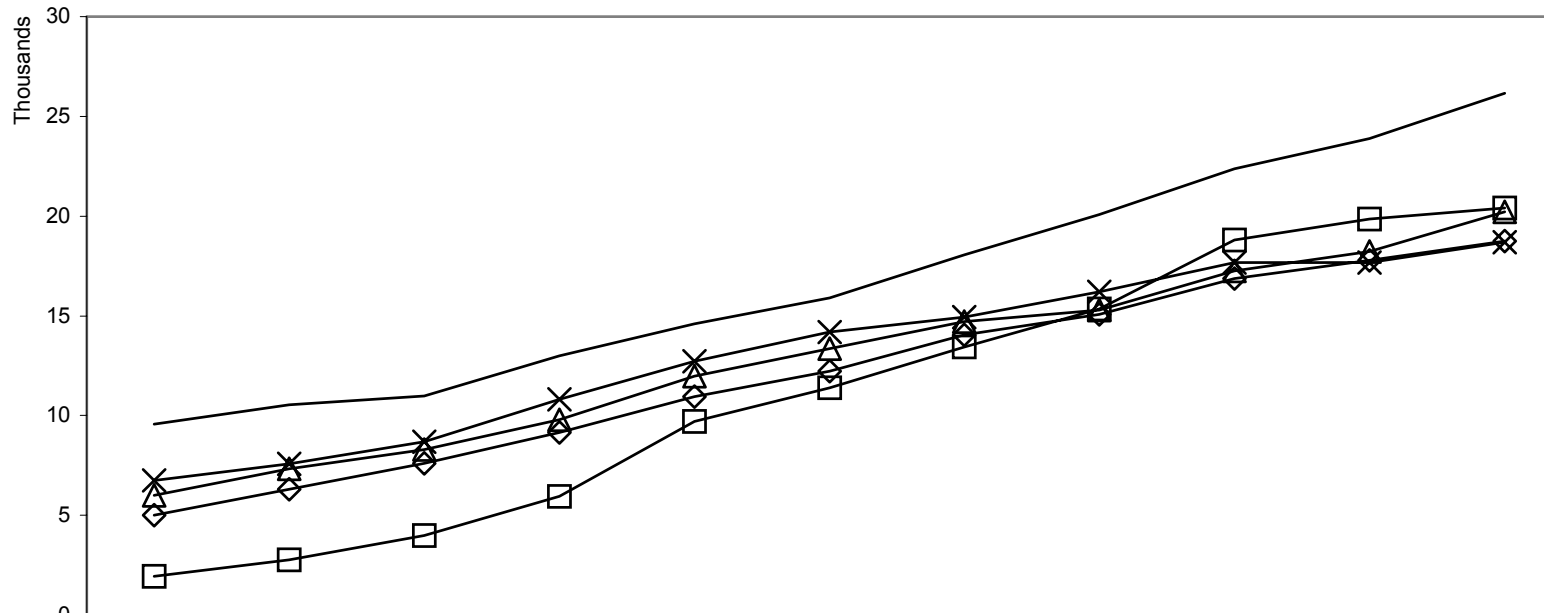
**Figure 1A**  
 Real GDP Per Capita: Average Annual Growth (Local Currency Units)



	1961-65	1966-70	1971-75	1976-80	1981-85	1986-90	1991-95	1996-2001
▲ Japan	7.09%	4.68%	9.04%	4.39%	1.92%	0.85%	0.40%	-1.14%
— United States	-0.07%	2.98%	5.54%	6.21%	4.31%	2.30%	1.42%	0.50%
◆ Netherlands	3.55%	1.90%	8.35%	6.57%	2.94%	0.16%	1.41%	1.22%
■ Sweden	4.49%	3.30%	2.21%	1.05%	1.75%	2.01%	0.16%	2.74%

Source: All calculations based on data series from the International Monetary Fund, *International Financial Statistics*. Accessed via DRI-WEFA's Econometric and Forecast Databases, *Webstract*.

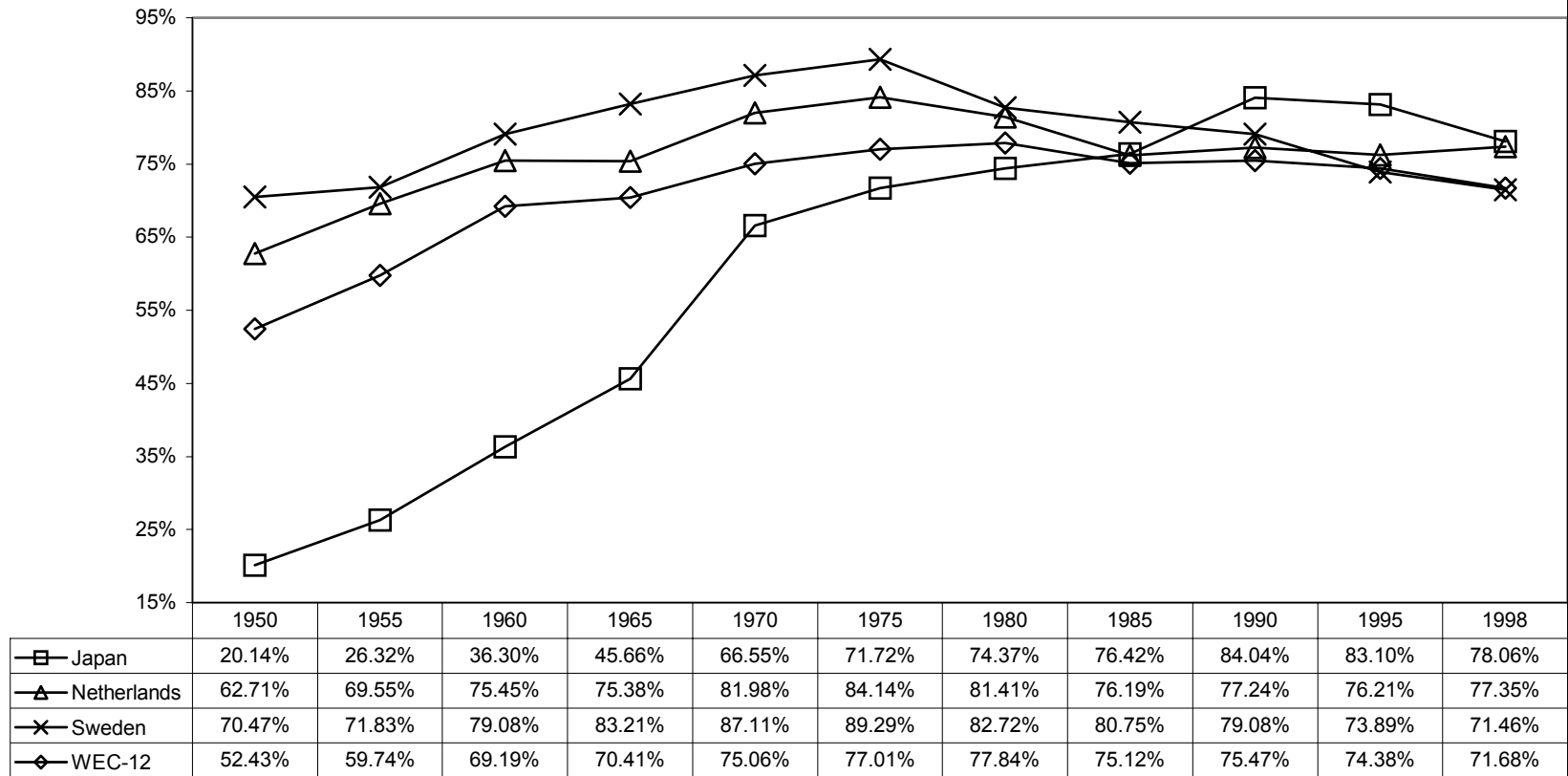
**Figure 2**  
Levels of GDP Per Capita: Selected Years (1990 International\$)



	1950	1955	1960	1965	1970	1975	1980	1985	1993	1995	1998
—□— Japan	1926	2772	3988	5934	9715	11394	13429	15332	18789	19857	20410
—▲— Netherlands	5996	7326	8289	9797	11967	13367	14700	15286	17267	18210	20224
—×— Sweden	6738	7566	8688	10815	12716	14184	14936	16201	17680	17655	18685
—◇— WEC-12	5013	6292	7601	9151	10956	12234	14056	15072	16872	17772	18742
— US	9561	10533	10986	12997	14597	15886	18057	20063	22356	23895	26146

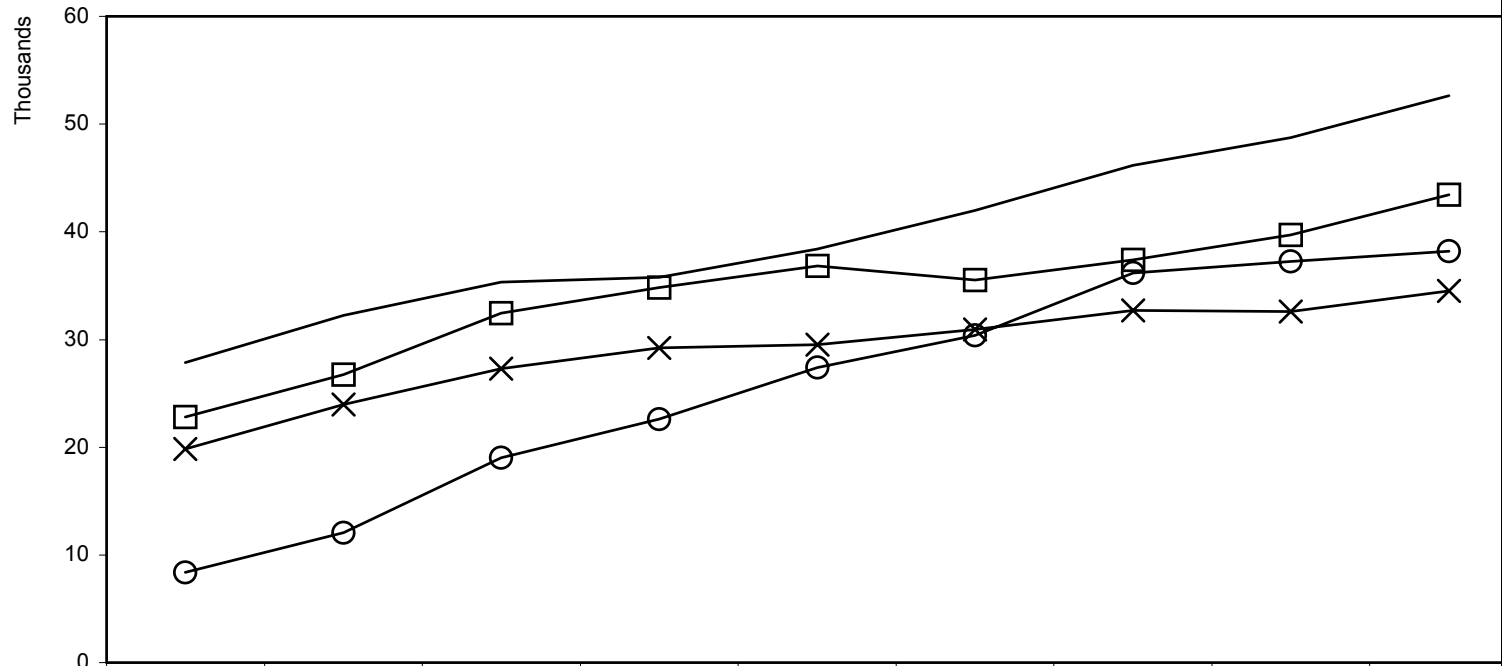
Source: Maddison, Angus, and Organisation for Economic Co-operation and Development, *The World Economy: A Millennial Perspective, Development Centre Studies*. (Paris, France: Development Centre of the Organisation for Economic Co-operation and Development, 2001) Appendix C, pp. 237-334.  
Western European Countries (WEC): Austria, Belgium, Denmark, Finland, France, Germany, Italy, Netherlands, Norway, Sweden, Switzerland, and the UK

**Figure 2A**  
Levels of GDP Per Capita Relative to the US: Selected Years (1990 International\$)



Source: Data presented in Figure 2.

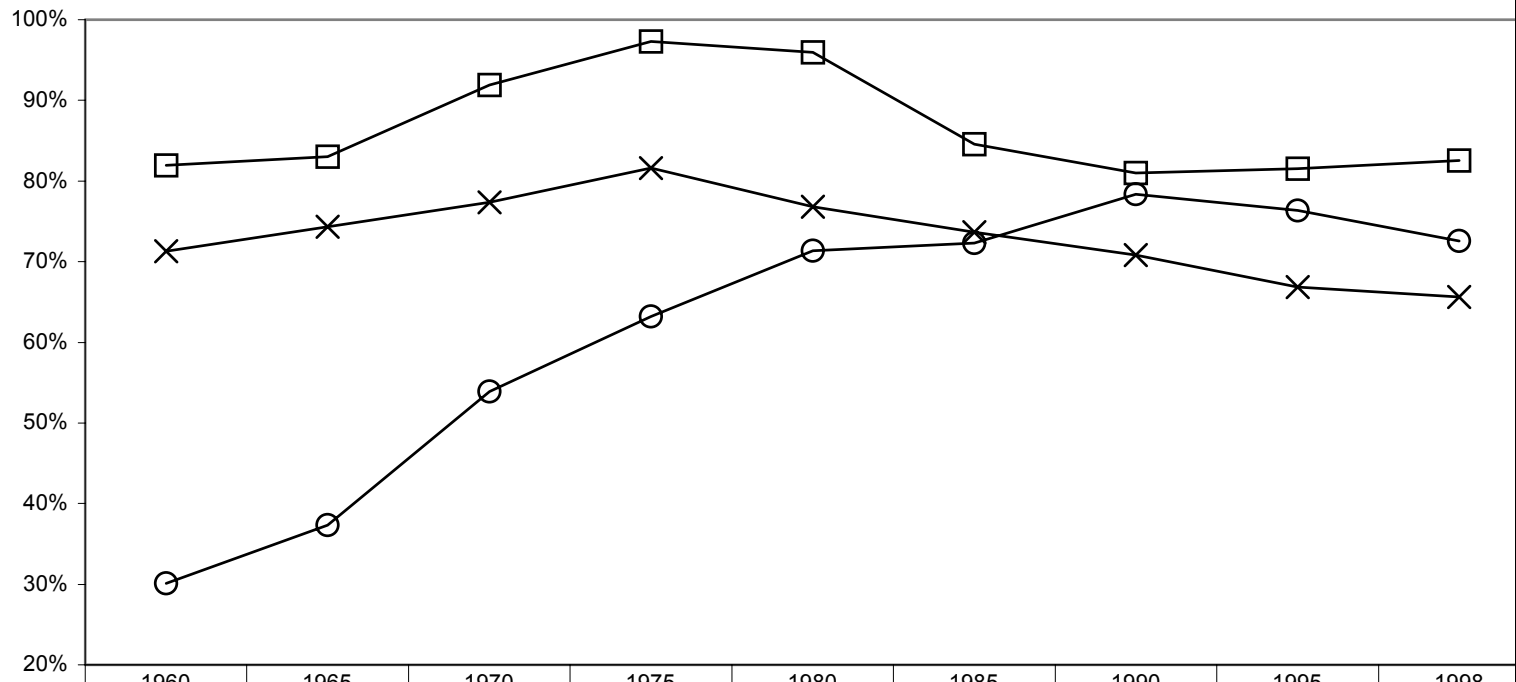
**Figure 3**  
Levels of GDP Per Economically Active: Selected Years (1990 International\$)



	1960	1965	1970	1975	1980	1985	1990	1995	1998
○ Japan	8387	12038	19028	22600	27404	30383	36196	37217	38187
□ Netherlands	22814	26764	32440	34813	36847	35524	37403	39739	43451
× Sweden	19854	23948	27317	29194	29515	30941	32702	32602	34523
— US	27848	32233	35306	35772	38412	42008	46179	48756	52621

Sources: GDP figures taken from A. Maddison, Appendix C. Labour Force statistics are from World Bank, *World Development Indicators*.  
Note: Economically active is defined here as total labour force.

**Figure 3A**  
Levels of GDP Per Economically Active Relative to the US: Selected Years (1990 International\$)

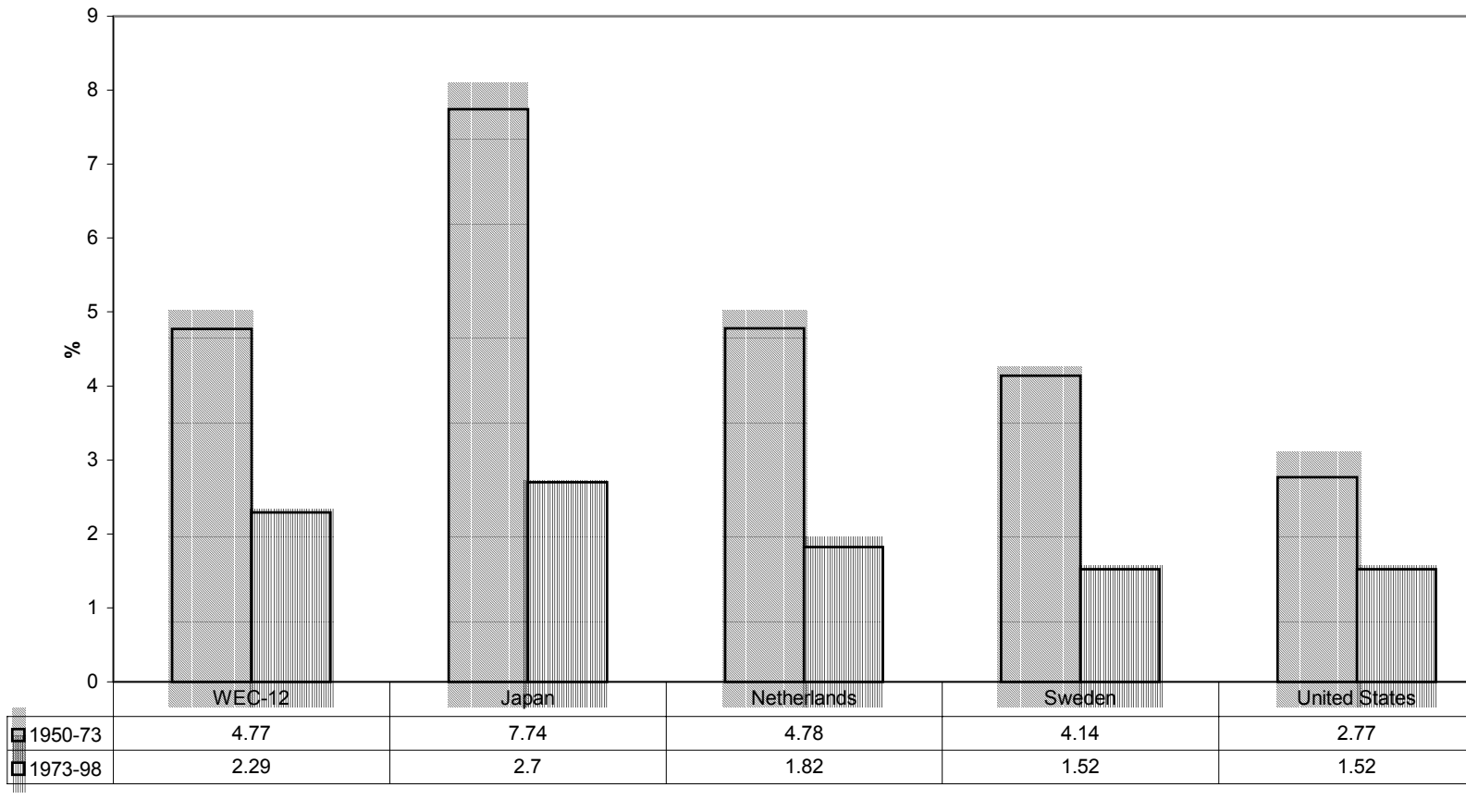


○— Japan	30.12%	37.35%	53.90%	63.18%	71.34%	72.33%	78.38%	76.33%	72.57%
□— Netherlands	81.92%	83.03%	91.88%	97.32%	95.92%	84.56%	81.00%	81.51%	82.57%
×— Sweden	71.29%	74.30%	77.37%	81.61%	76.84%	73.66%	70.82%	66.87%	65.61%

Sources: GDP figures taken from A. Maddison, Appendix C. Labour Force statistics from *World Development Indicators*.  
Note: Economically active is defined here as total labour force.

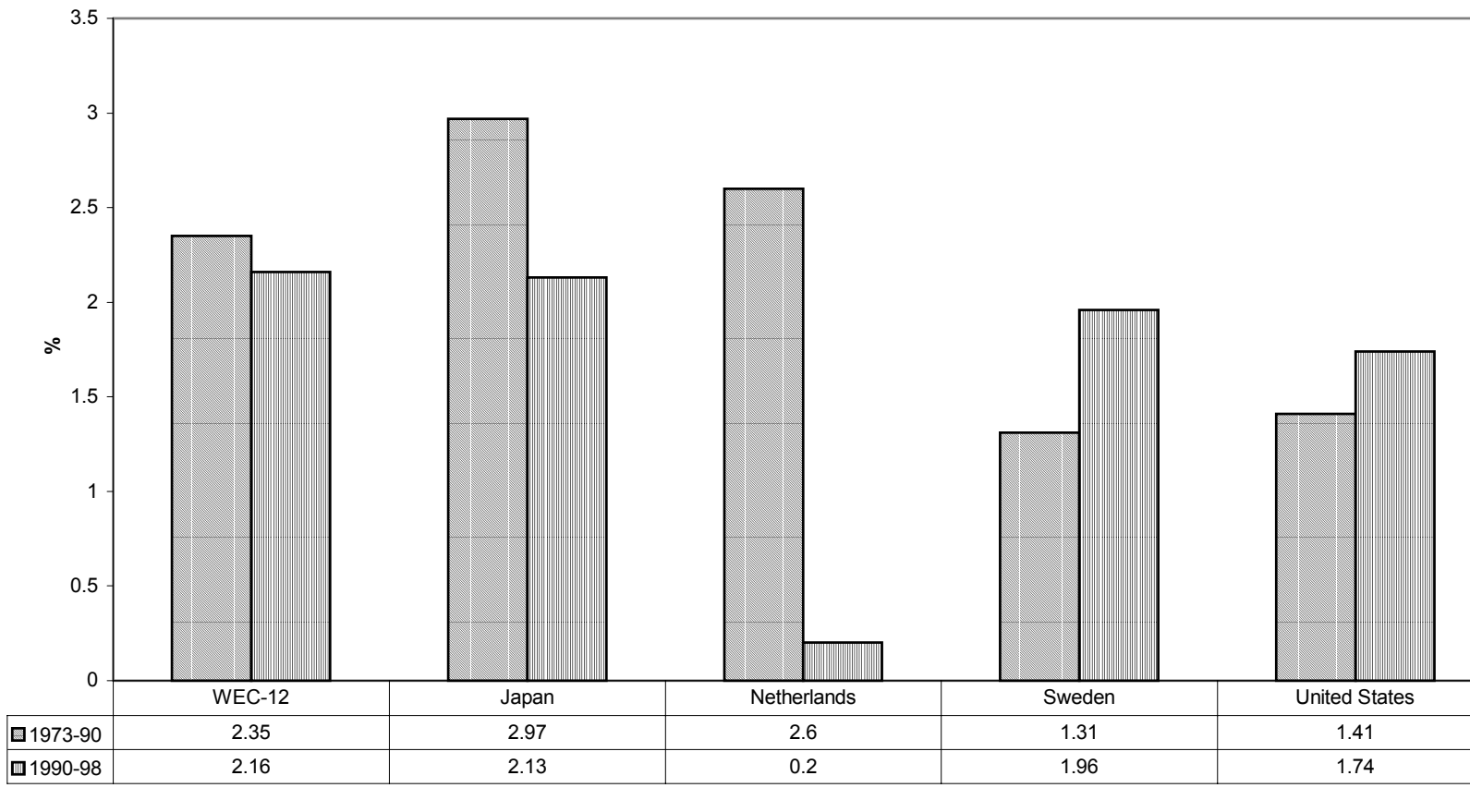
**Figure 4**

Changes in Post War Productivity Growth: Annual Averages for Selected Periods (GDP Per Hours Worked)



Source: All figures reproduced from A. Maddison, Appendix E, pp. 343-56

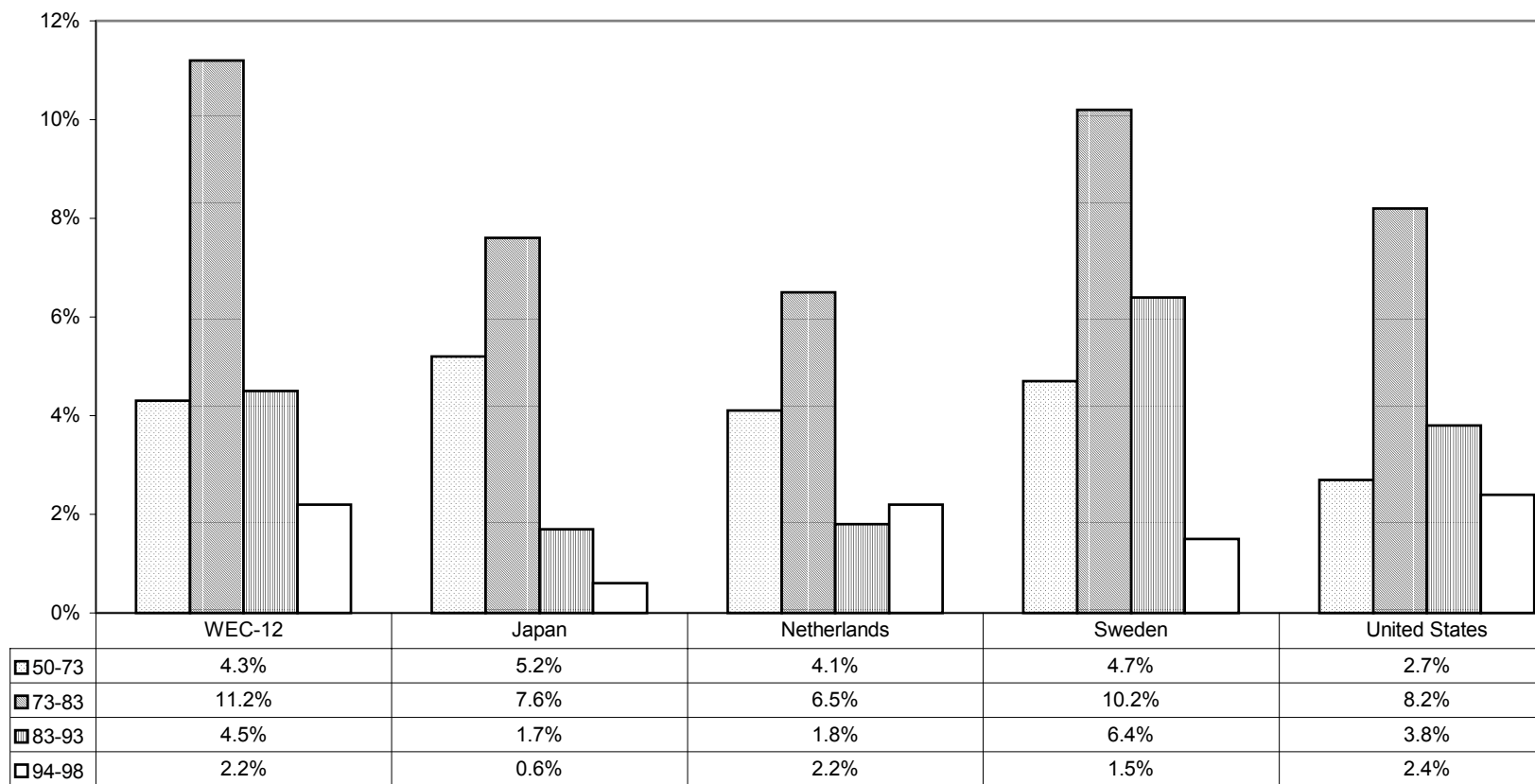
**Figure 4A**  
 Productivity Growth: Annual Averages for Selected Periods (GDP Per Hours Worked)



Source: All figures reproduced from A. Maddison, Appendix E, pp. 343-56

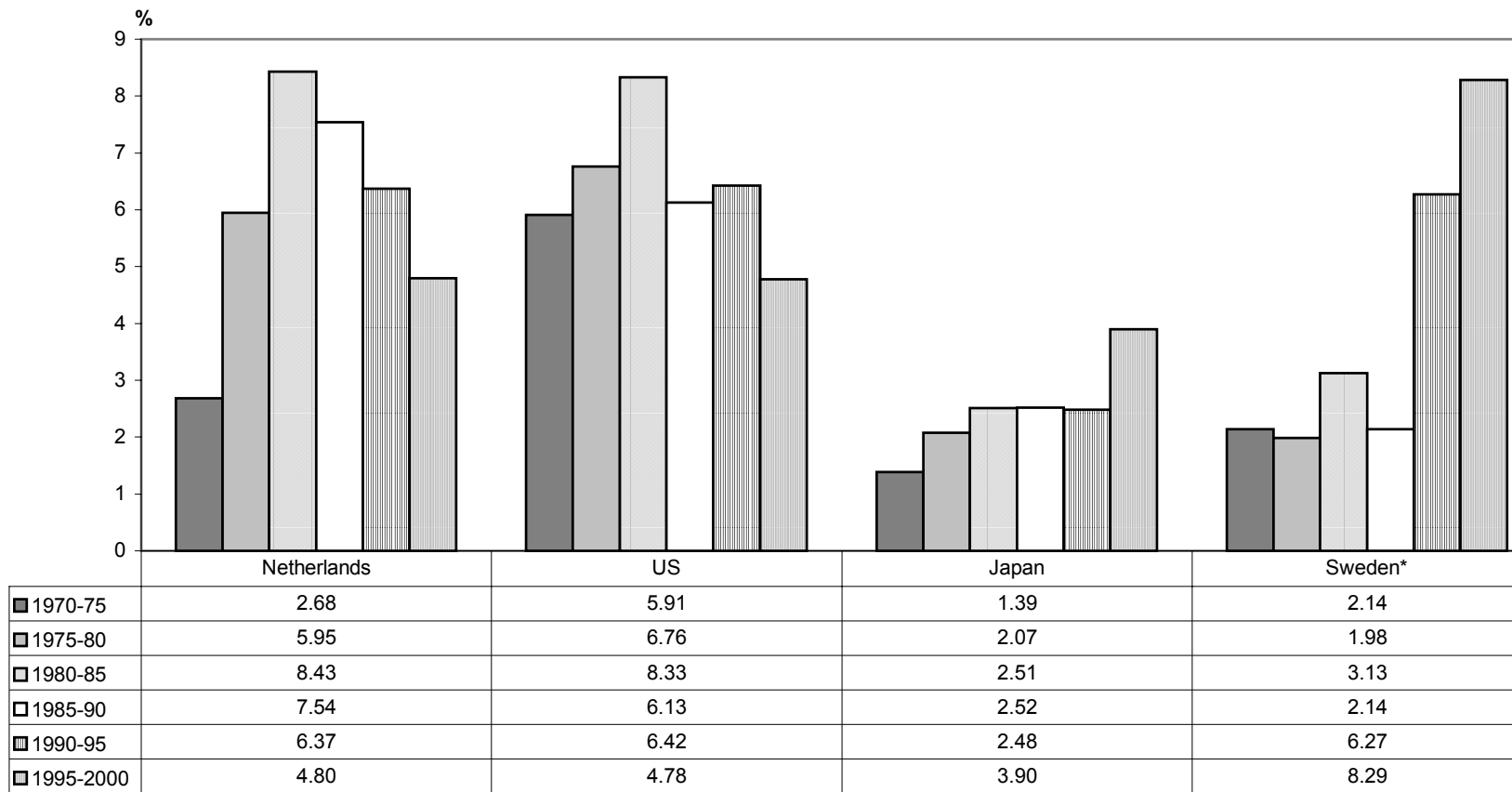


**Figure 5**  
Changes in Post War Price Levels: Annual Averages for Selected Periods (CPI)



Source: All figures reproduced from A. Maddison, p. 134.

**Figure 6**  
Unemployment Rates: Annual Averages for Selected Periods (Standardized Rates\*)

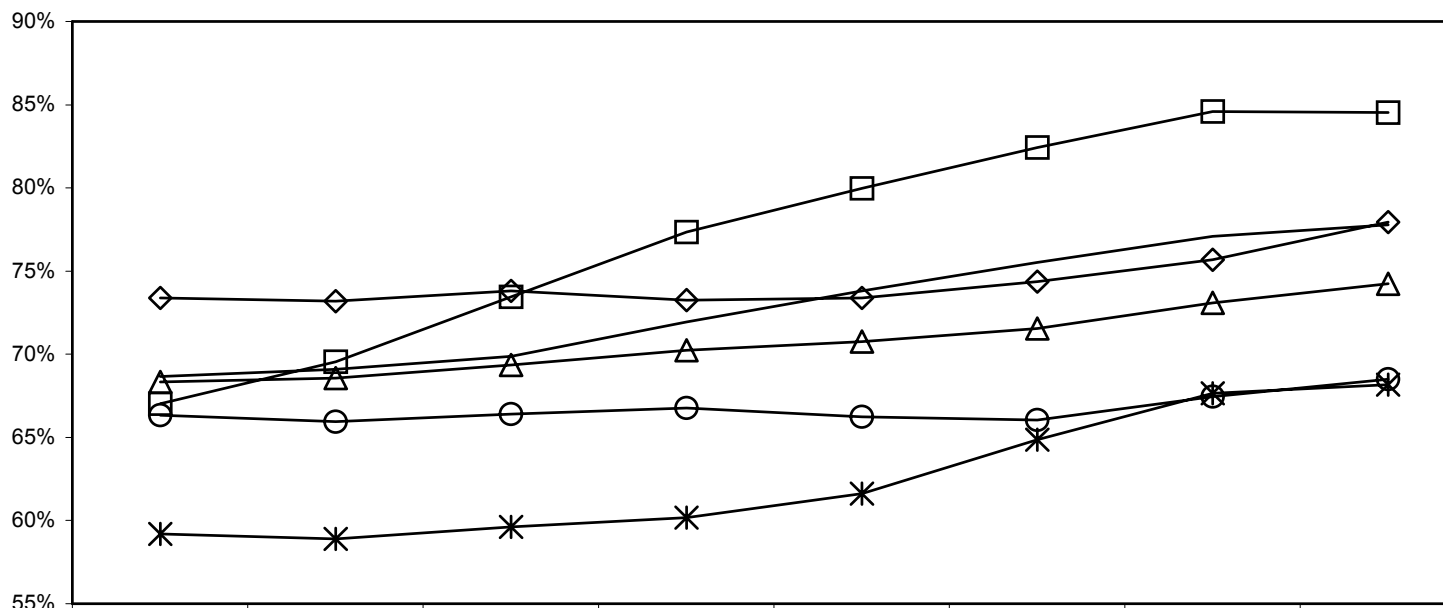


Source: All series are from EUROSTAT. Accessed via DRI-WEFA's Econometric and Forecast Databases, *Webstract*.

Note: Unemployment figures are standardized rates.

\* Unemployment rates for Sweden prior to 1982 are non-standardized rates, and, therefore, are not strictly comparable.

**Figure 7**  
Labour Force Participation Rates: Annual Averages for Selected Periods



	1960-65	1965-70	1970-75	1975-80	1980-85	1985-90	1990-95	1995-2000
—○— EMU-12	66.35%	65.96%	66.41%	66.77%	66.23%	66.06%	67.46%	68.51%
—△— High income: OECD	68.33%	68.56%	69.37%	70.24%	70.77%	71.56%	73.08%	74.23%
—◇— Japan	73.39%	73.20%	73.80%	73.25%	73.40%	74.37%	75.69%	77.95%
—*— Netherlands	59.20%	58.91%	59.61%	60.19%	61.63%	64.87%	67.64%	68.17%
—□— Sweden	67.03%	69.55%	73.44%	77.36%	79.98%	82.42%	84.60%	84.53%
— US	68.66%	69.08%	69.89%	71.93%	73.80%	75.50%	77.08%	77.77%

Source: World Bank, *World Development Indicators*.

Note: Labour force participation rates calculated as (labour force / population aged 15-64).

**Figure 7A**  
Activity Rates: Annual Averages for Selected Periods

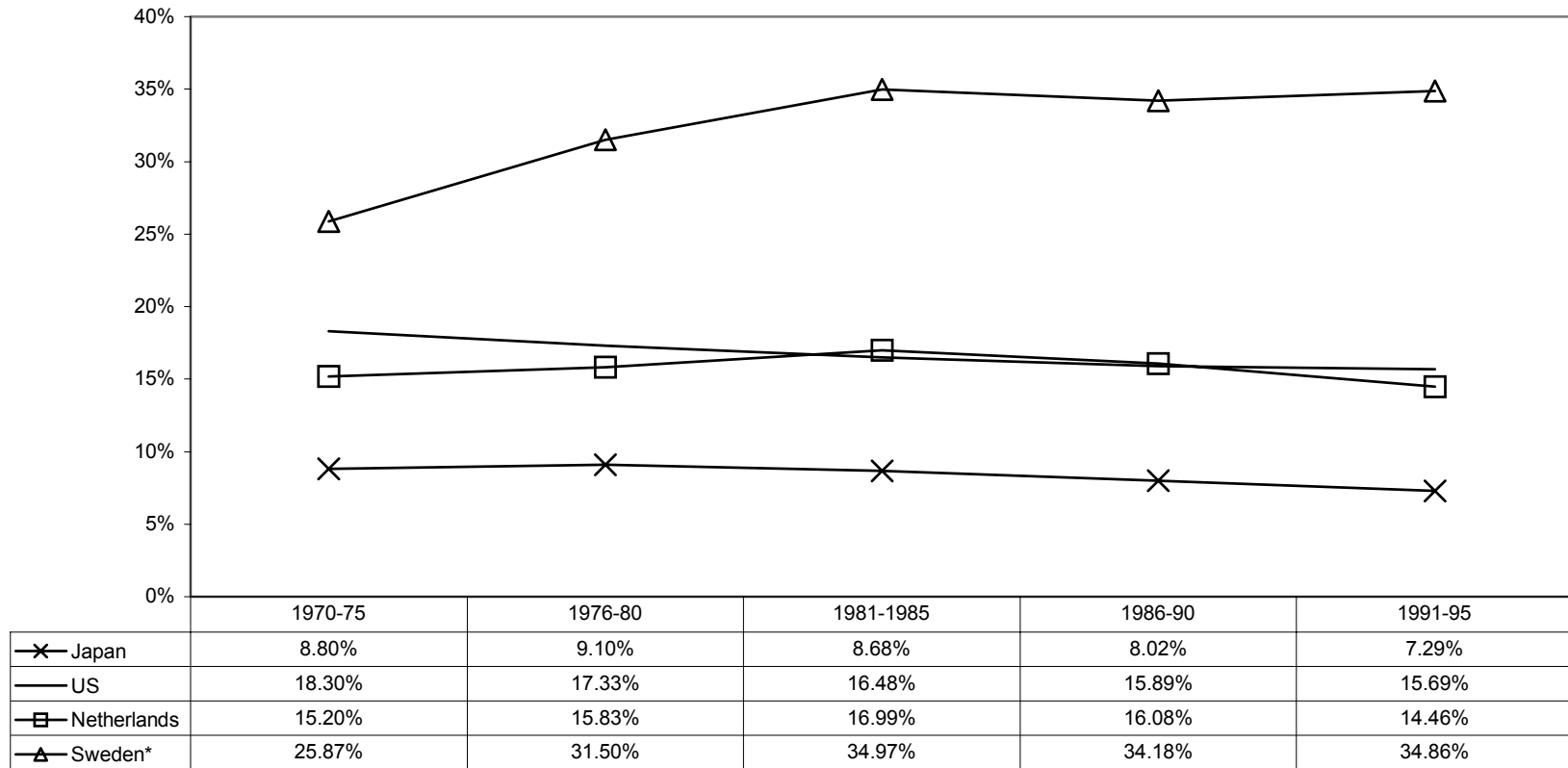


	1960-65	1965-70	1970-75	1975-80	1980-85	1985-90	1990-95	1995-2000
—◆— EMU-12	42.71%	41.87%	41.87%	42.65%	43.55%	44.57%	45.52%	46.16%
—▲— High income: OECD	42.92%	43.22%	44.08%	45.48%	46.79%	48.02%	49.05%	49.77%
—×— Japan	48.41%	50.17%	50.54%	49.52%	49.74%	51.19%	52.66%	53.60%
—□— Netherlands	36.46%	36.74%	37.62%	39.14%	41.45%	44.59%	46.38%	46.56%
—○— Sweden	44.46%	45.85%	47.57%	49.59%	51.49%	53.24%	54.12%	54.12%
— US	41.15%	42.10%	44.05%	46.99%	48.95%	49.91%	50.53%	51.04%

Source: World Bank, *World Development Indicators*.

Note: Activity rates calculated as (labour force / total population).

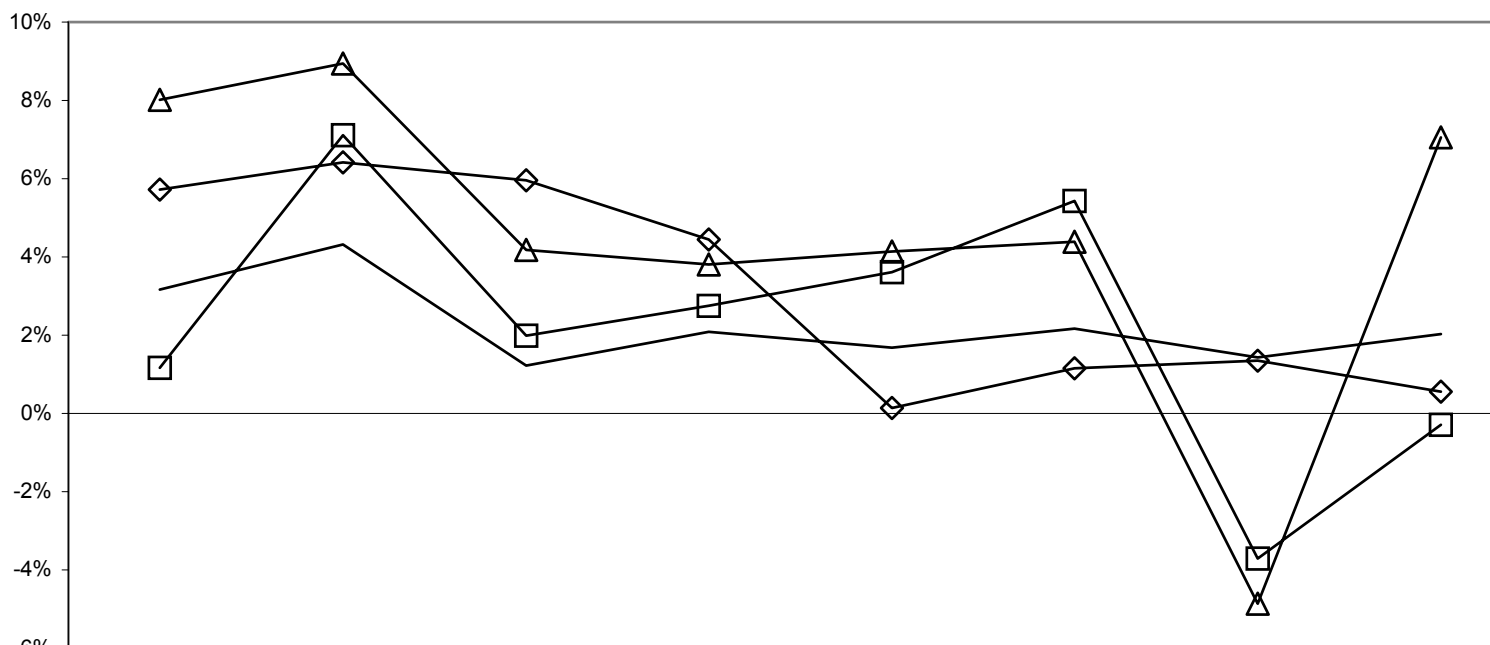
**Figure 8**  
Government Employment as Percent of Total Employment: Annual Averages for Selected Periods



Sources: Government and total employment series data from OECD, *National Income Accounts*. Accessed via DRI-WEFA's Econometric and Forecast Databases, *Webstract*. Government employment data for US taken from Bureau of Economic Analysis (BEA), *National Economic Data*. Accessed via <http://www.bea.doc.gov/>

\*Last period averages for Sweden 1991-94

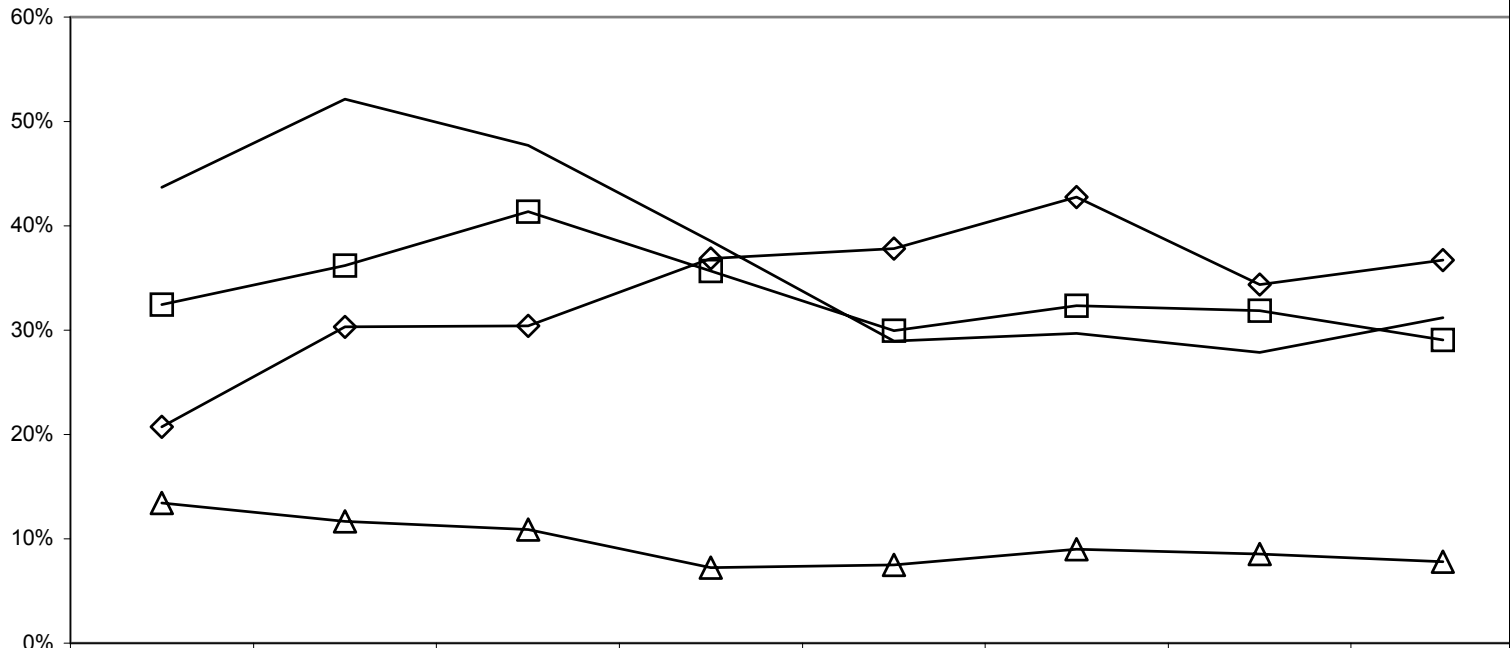
**Figure 9**  
Government Revenue Per Capita: Average Annual Growth for Selected Periods



	1961-65	1966-70	1971-75	1976-80	1981-85	1986-90	1991-95	1996-2001
—□— Japan	1.17%	7.12%	1.98%	2.75%	3.61%	5.43%	-3.70%	-0.29%
— US	3.16%	4.32%	1.22%	2.08%	1.67%	2.17%	1.44%	2.03%
—◇— Netherlands	5.72%	6.41%	5.96%	4.45%	0.14%	1.15%	1.34%	0.56%
—△— Sweden	8.02%	8.95%	4.18%	3.80%	4.14%	4.39%	-4.86%	7.06%

Sources: All calculations based on Revenue and Population data series from International Monetary Fund, *International Financial Statistics*. Accessed via DRI-WEFA's Econometric and Forecast Databases, *Webstract*. For the 1960-70 period, data for Japan taken from Ministry of Finance Statistics (MITI). Accessed via DRI-WEFA's Econometric and Forecast Databases, *Webstract*.

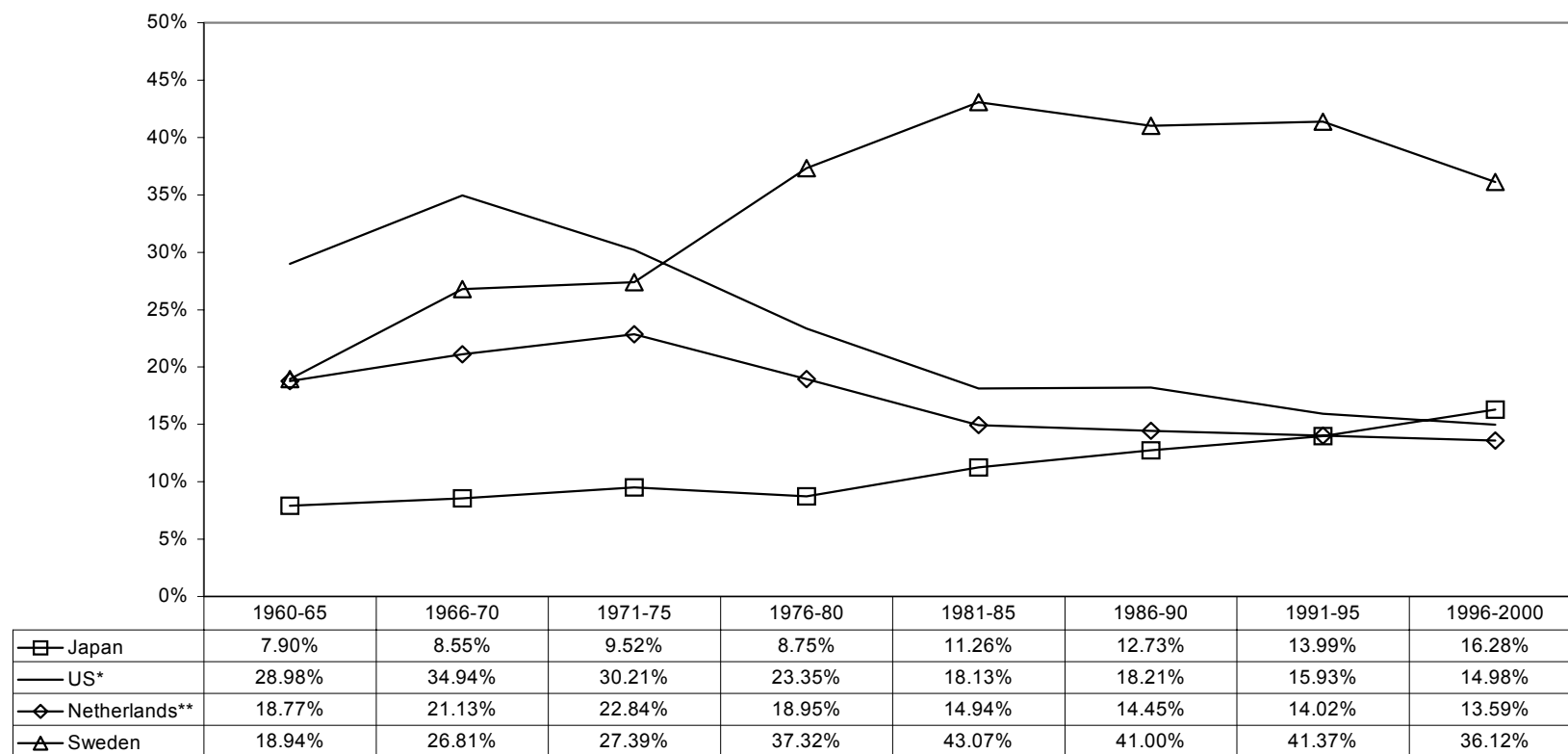
**Figure 9A**  
Government Revenue as Percent of GDP: Annual Averages for Selected Periods



	1960-65	1966-70	1971-75	1976-80	1981-85	1986-90	1991-95	1996-2001
▲ Japan	13.45%	11.66%	10.88%	7.26%	7.50%	9.00%	8.56%	7.81%
— US	43.70%	52.12%	47.69%	38.57%	28.93%	29.71%	27.85%	31.18%
■ Netherlands	32.42%	36.20%	41.33%	35.67%	29.95%	32.36%	31.89%	29.04%
◆ Sweden	20.74%	30.31%	30.40%	36.86%	37.80%	42.74%	34.37%	36.74%

Sources: All calculations based on Revenue and GDP data series from International Monetary Fund, *International Financial Statistics*. Accessed via DRI-WEFA's Econometric and Forecast Databases, *Webstract*. For the 1960-70 period data for Japan taken from Ministry of Finance Statistics (MITI). Accessed via DRI-WEFA's Econometric and Forecast Databases, *Webstract*.

**Figure 10**  
Government Expenditure as Percent of GDP: Annual Averages for Selected Periods



Sources: Government expenditure data for Sweden, Netherlands and Japan taken from International Monetary Fund, *International Financial Statistics*. Data for US are taken from OECD, *National Income Accounts*. All population figures as from the IMF, *World Development Indicators*.

Note: All expenditure data are final consumption figures. Figures for Sweden are central government expenditures; all others are general government expenditures.

\*Averages for the US in the last period 1996 only.

\*\*Averages for the Netherlands calculated for 1996-97 only.



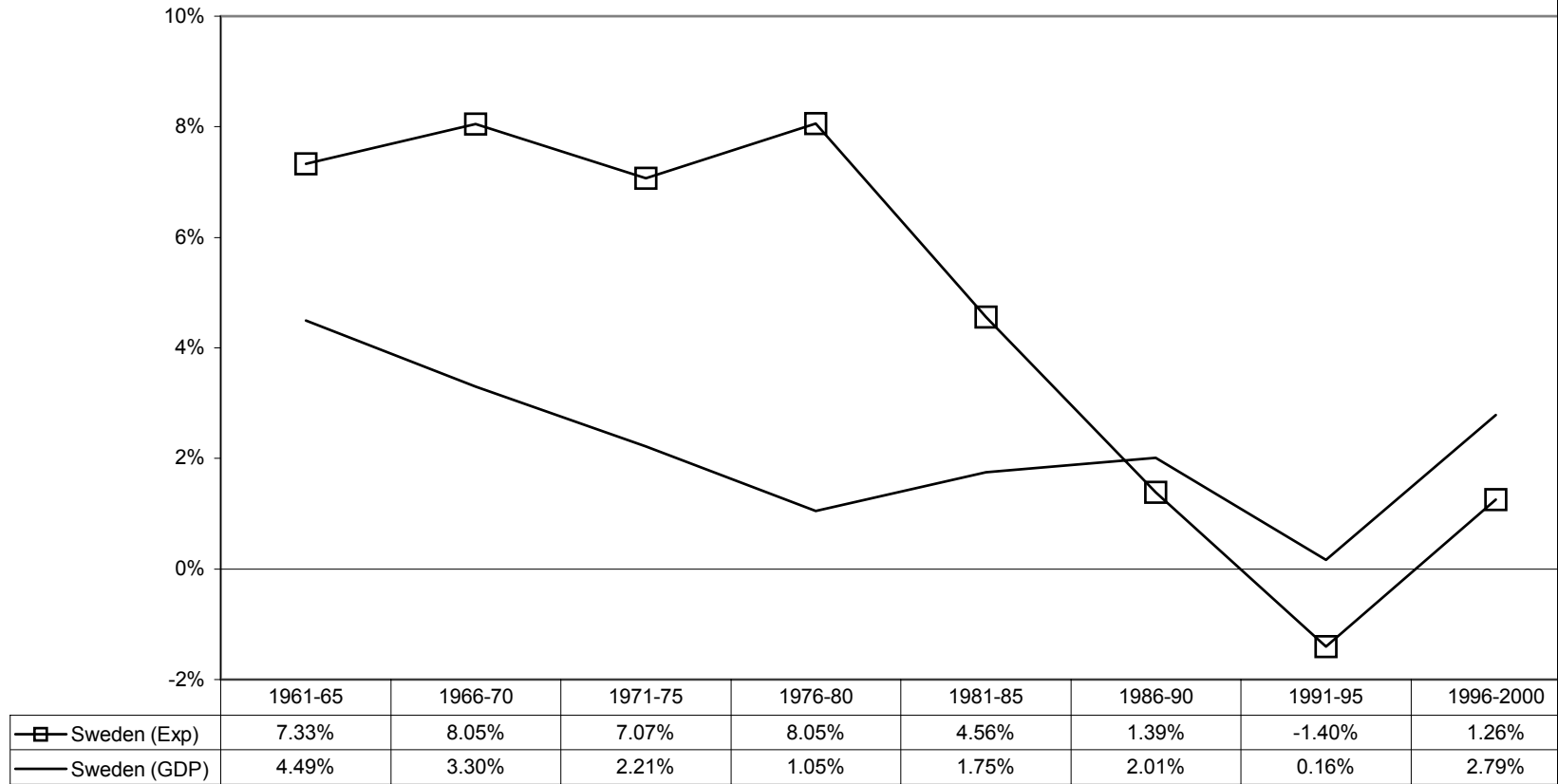
**Figure 10A**  
Government Expenditures Per Capita: Average Annual Growth for Selected Periods



Source: Expenditure data as presented in Figure 10.  
 \* Averages for the United States in the last period 1996 only  
 \*\* Averages for the Netherlands in the last period 1996-97 only.  
 \*\*\* Averages for Sweden in the last period 1996-2000 only

**Figure 11A**

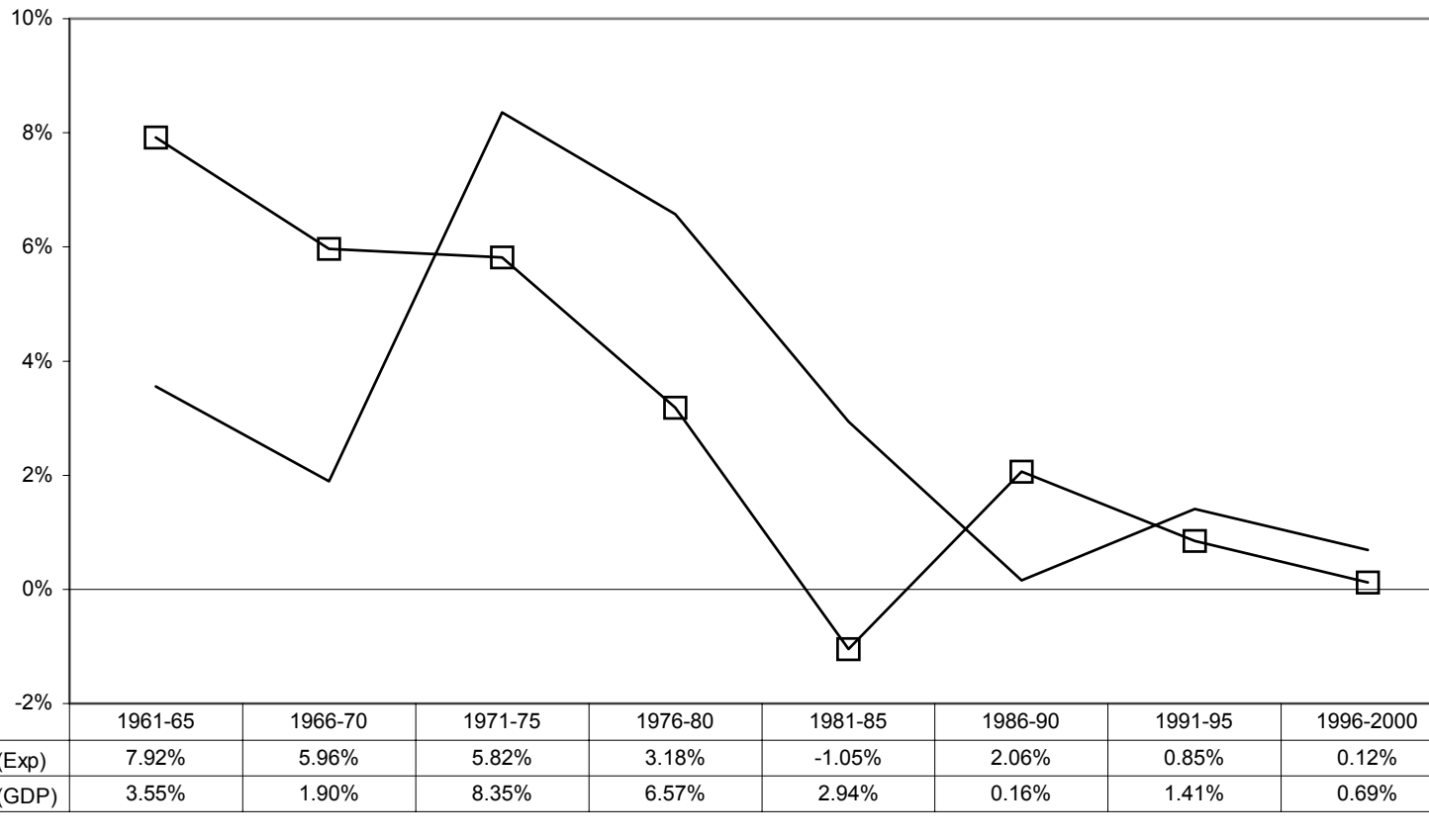
(Sweden) Expenditure Per Dependent and GDP Per Capita: Average Annual Growth for Selected Periods



Sources: Government expenditure data for Sweden taken from International Monetary Fund, *International Financial Statistics*. Dependents are defined as (population – labour force). All labour force and population data from World Bank, *World Development Indicators*.

**Figure 11B**

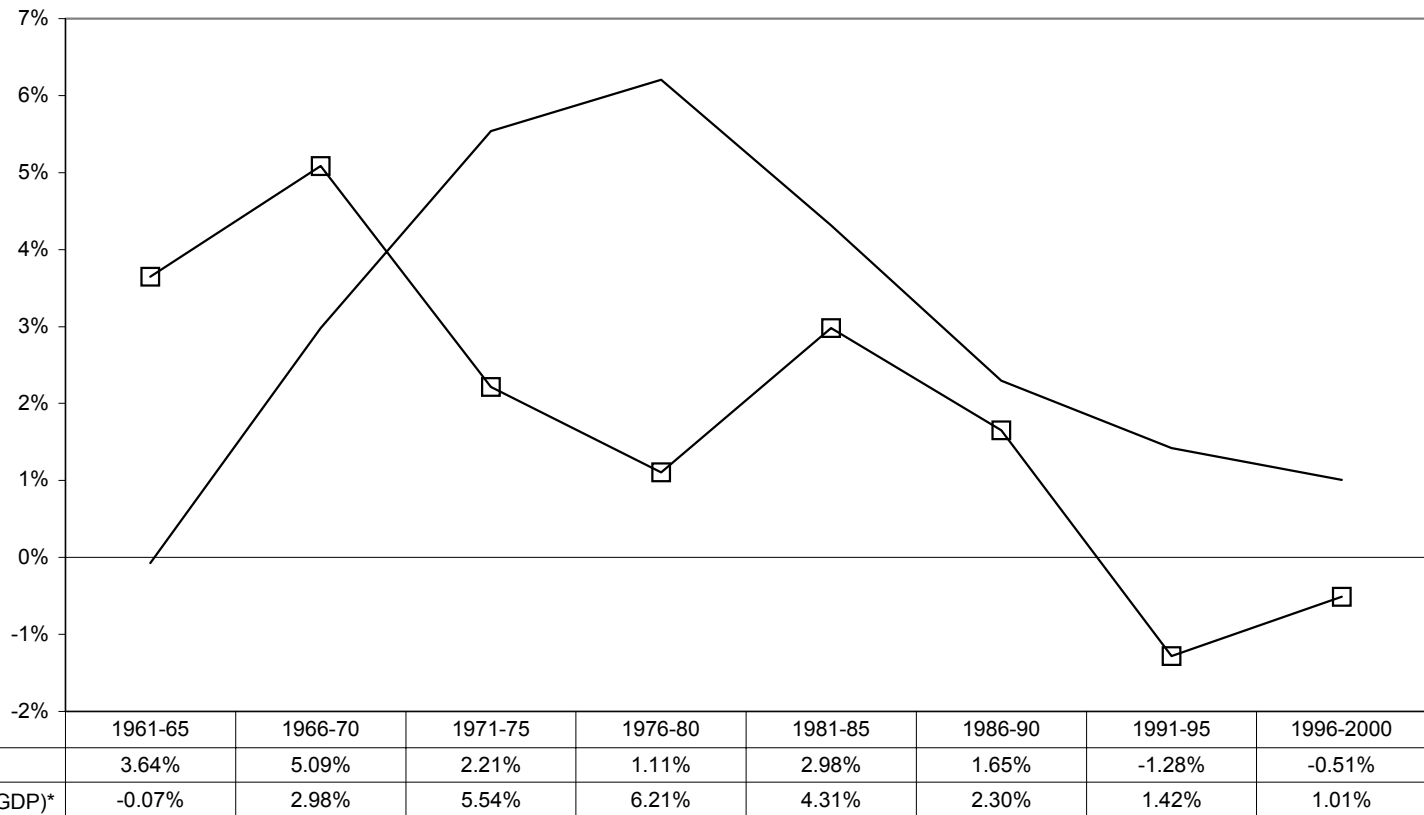
(Netherlands) Expenditure Per Dependent and GDP Per Capita: Annual Average Growth for Selected Periods



Sources: Government expenditure data for Netherlands taken from International Monetary Fund, *International Financial Statistics*. Dependents are defined as (population – labour force). All labour force and population data from World Bank, *World Development Indicators*. Note: last period averages 1996-1997.

**Figure 11C**

(US) Expenditure Per Dependent and GDP Per Capita: Average Annual Growth for Selected Periods

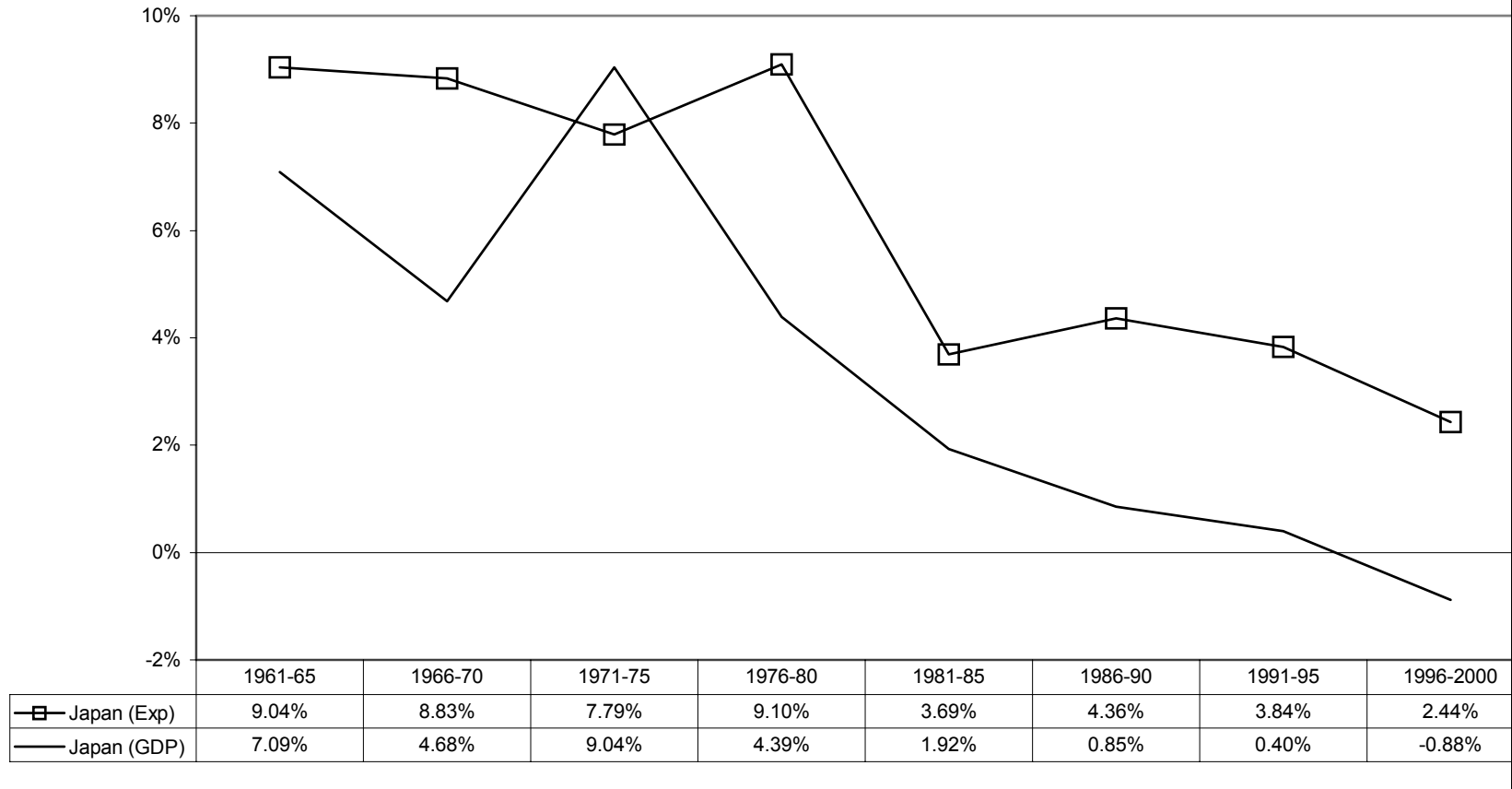


Sources: Government expenditure data taken from the OECD, National Income Accounts. All labour force and population data from World Bank, *World Development Indicators*.

\* Data for the last period 1996 only.

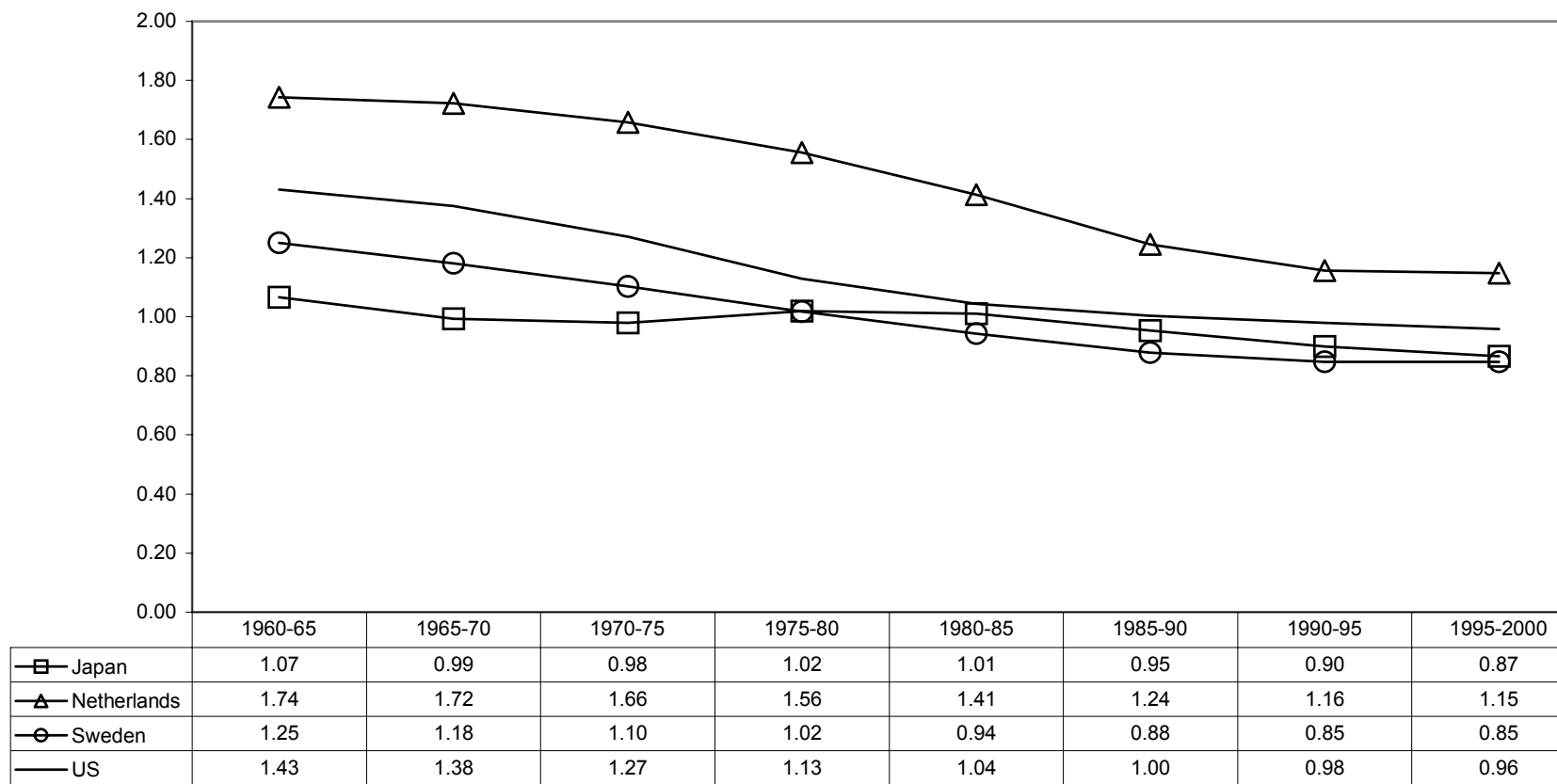
**Figure 11D**

(Japan) Expenditure per Dependent and GDP Per Capita: Average Annual Growth for Selected Periods



Sources: Government expenditure data for Japan taken from International Monetary Fund, *International Financial Statistics*. Dependents are defined as (population – labour force). All labour force and population data from World Bank, *World Development Indicators*.

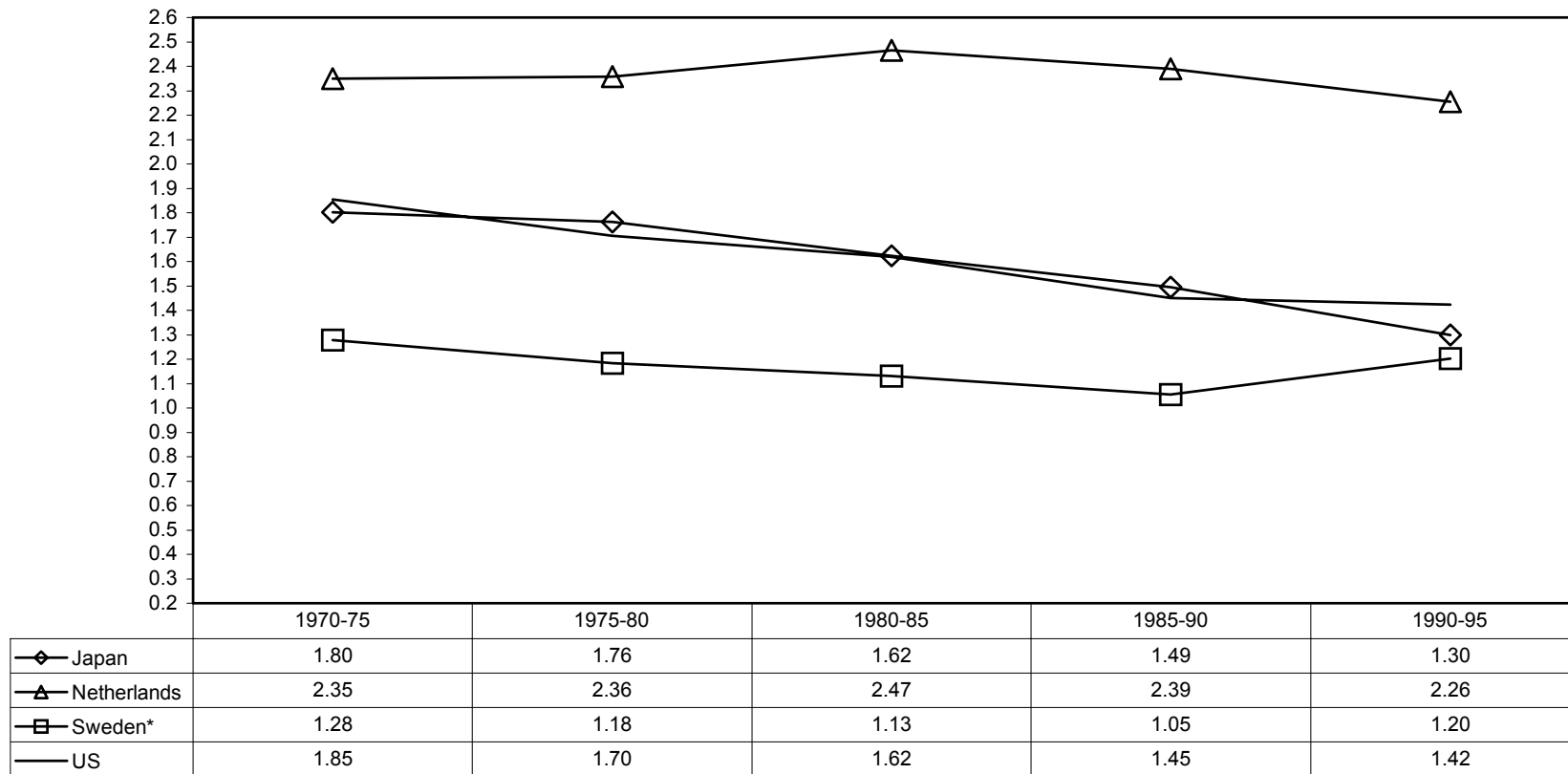
**Figure 12**  
Dependency Ratio: Annual Averages for Selected Periods



Source: All figures from World Bank, *World Development Indicators*.

Note: Dependency defined as (population – labour force). Dependency ratio is (dependents / labour force).

**Figure 12A**  
Alternate Dependency Ratio: Annual Averages for Selected Periods



Source: Employment figures taken from International Monetary Fund, *International Financial Statistics*. Population figures are taken from World Bank, *World Development Indicators*.

Note: Dependents defined as (total population – total employment). Dependency ratio is (dependents / employed).

\* Last period average from 1990-94.