

Source for all diagrams: Archivio Provinciale di Bolzano/Südtiroler Landesarchiv, Lascito/Nachlass Ottenthal, Historiae Morborum, project team's own calculations.

Diagram 1: Number of patients between 1847 and 1899 (n = 79.168).

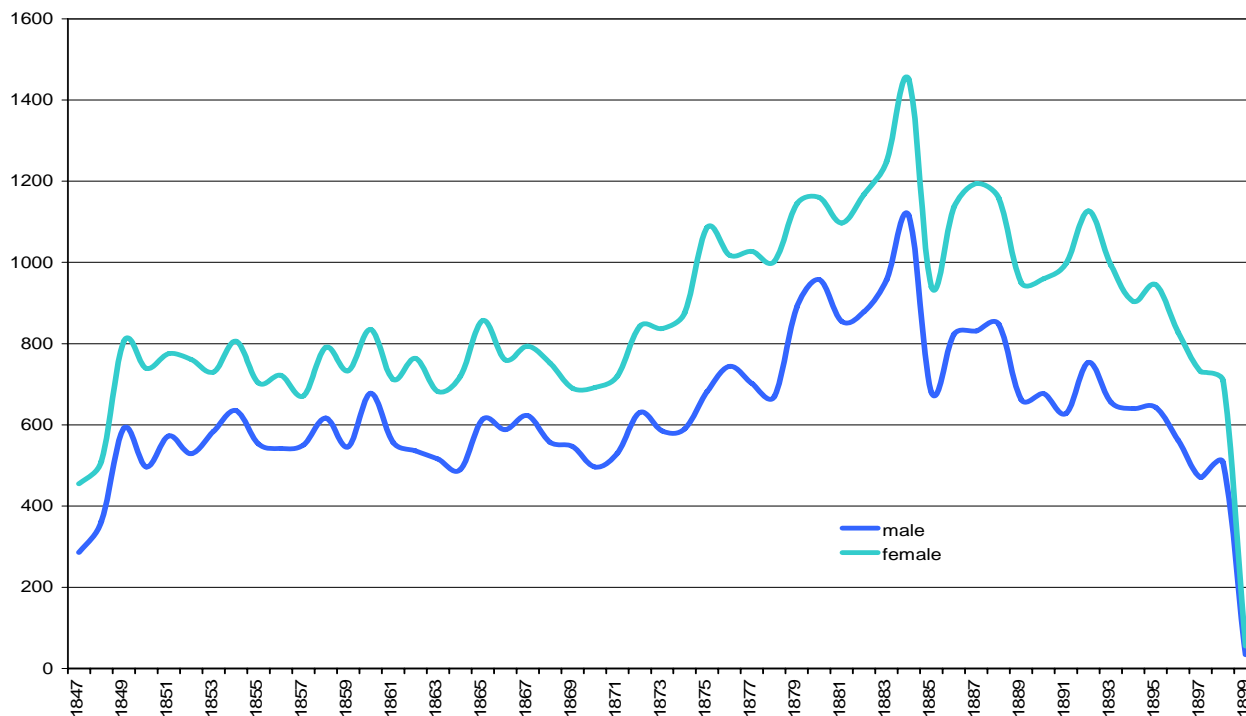


Diagram 2: Number of patients per month in the years 1850, 1860, 1870 and 1880 in comparison (n = 14.517).

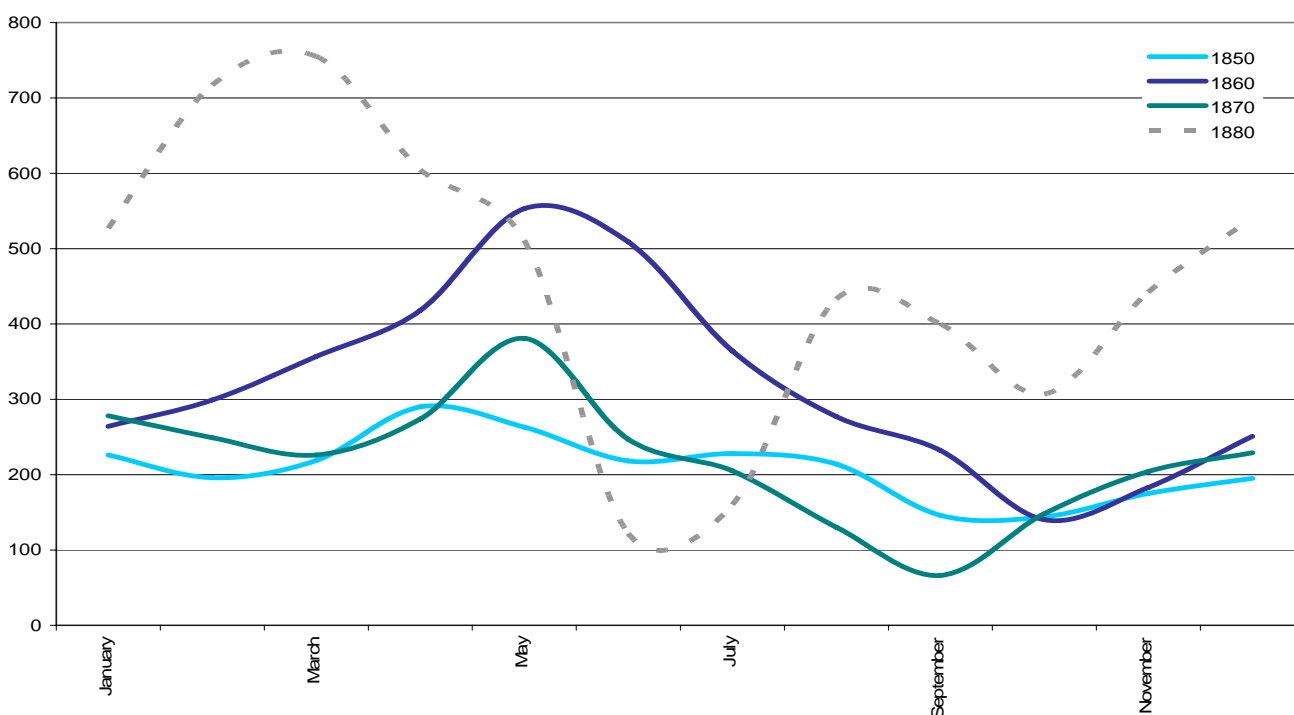


Diagram 3: Change of the age-group shares compared to the total patients' number between 1850 and 1890 (n = 63.959).

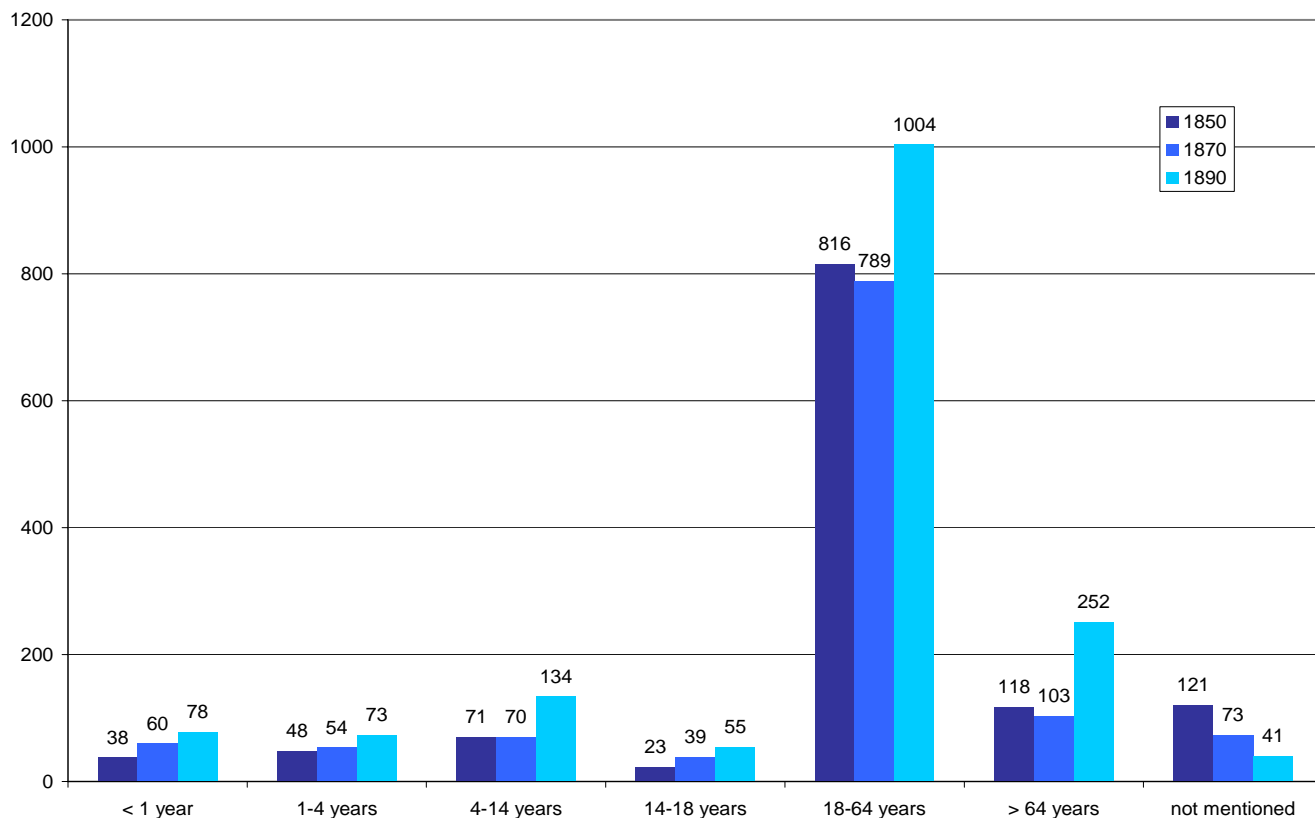


Diagram 4: Patients' gender-proportion 1847-1899 (n = 61.054). Date of query: October 12, 2007

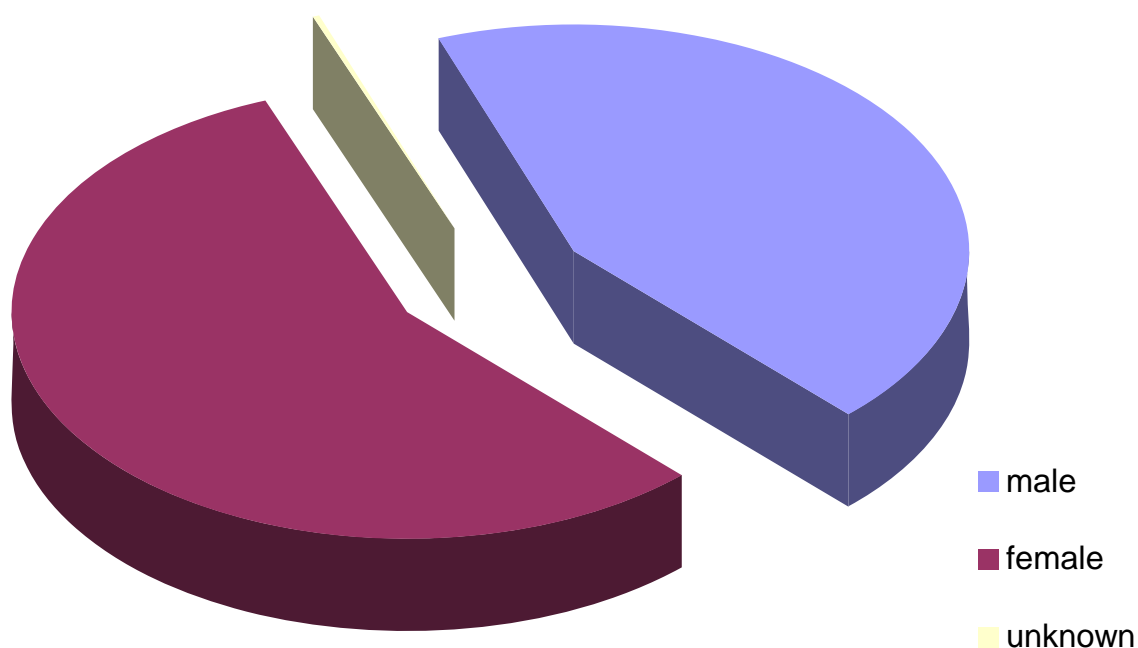


Diagram 5: Proportion of the patients' age-groups 1847-1899 (n = 79168).

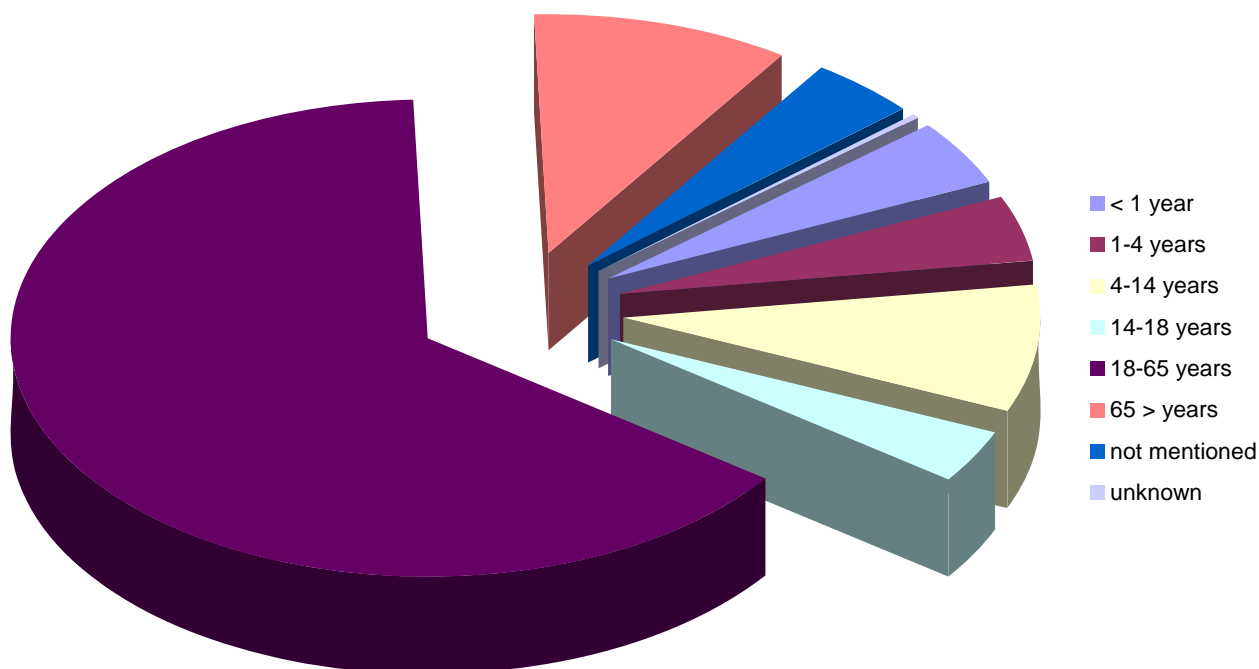


Diagramm 6: The surgery's catchment area – the patients' places of residence (n = 69.253). Date of query: October 12, 2007. The villages have been assigned to juridical districts according to the compendium „Orts-Repertorium der gefürsteten Grafschaft Tirol und Vorarlberg. Auf Grundlage der Volkszählung vom 31. December 1869 bearbeitet von der k. k. statistischen Central-Commission in Wien“, Innsbruck 1873.

