



Pollen monitoring report Galtür

May 08th 2026

The birch pollen season has reached its peak in Galtür!

Innsbruck (615 m a.s.l.)

Birch ● Grasses ●
 Beech ● Plantain ●
 Oak ● Dock/Sorrel ●

Galtür (1579 m a.s.l.)

Birch ● Grasses ●
 Beech ● Plantain ●
 Oak ● Dock/Sorrel ●

Risk classes

● absent/very low

● low

● moderate

● high

IN A NUTSHELL

At the elevation of Galtür, birch pollen remains the main allergenic challenge, while grass pollen levels are still minimal.

We will continue to monitor developments closely and keep you informed.

Our pollen measurements in Galtür are ongoing, and we continue to provide weekly updates on the local pollen situation.

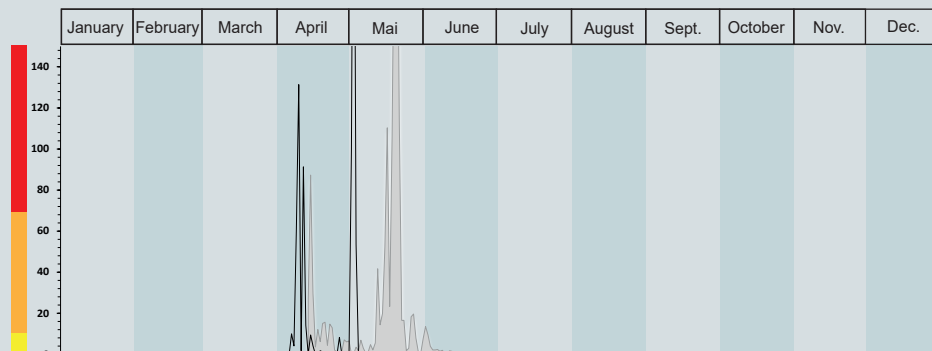
coming days. Pollen from spruce and pine are also strongly increasing and currently dominate a large share of the airborne pollen spectrum.

Tyrol overview: In Tyrol, birch pollen concentrations are now decreasing in many valley areas, while the grass pollen season is beginning and gradually becoming more important. Beech and oak pollen are still present and may continue to contribute to symptoms in individuals sensitised to birch pollen due to cross-reactivity. Grass pollen concentrations are currently low to moderate depending on the location and are expected to increase further in the

Galtür situation: In contrast to the valley bottoms, Galtür is currently experiencing the peak of the birch pollen season. High birch pollen concentrations are being recorded and can locally reach particularly high allergenic levels. This is therefore a challenging period for individuals sensitive to birch pollen in Galtür. In the coming days, unstable weather conditions and periods of precipitation may provide temporary relief for allergy sufferers.

The good news is that grass pollen concentrations remain very low in Galtür for now. Only single grass pollen grains are currently being detected, and no relevant allergenic burden from grasses is expected at this stage. Compared to valley bottoms, where grass pollen concentrations can already locally reach moderate levels, higher elevations such as Galtür currently remain much more favourable for individuals with grass pollen allergies.

Birch pollen concentration (pollen/m³ of air)



■ Galtür 2021-2023 — Galtür 2026

Pollen allergy burden: ■ High ■ Medium ■ Low ■ Absent/Very low



Picture. Catkins of birch trees.