



DIAMONT

Working in Test Regions

Innsbruck, 16.04.2007

Konstanze Schönthaler

Büro Herne
Schaeferstr. 18
44623 Herne

Büro Hannover
Lister Damm 1
30163 Hannover

Büro München
Josephspitalstr. 7
80331 München

National Analysis

Selection of German Test Region

Context Analysis

National Analysis

- Selection of test regions by identifying municipalities
 - which probably have problems with land resource management
 - which are developing dynamically or stagnating
- Comparing regions and municipalities
- Test of indicators of WP7

National Analysis

Collection of additional statistical data



Reflection and specification of proposed indicators (WP's 7-9)



Indicator work



Statistical analysis



- Analysing status quo (land use indicators)
- Analysing some selected pressures (demographic, housing and economic pressures)
- ! Possible consequences are not in the focus of the national analysis

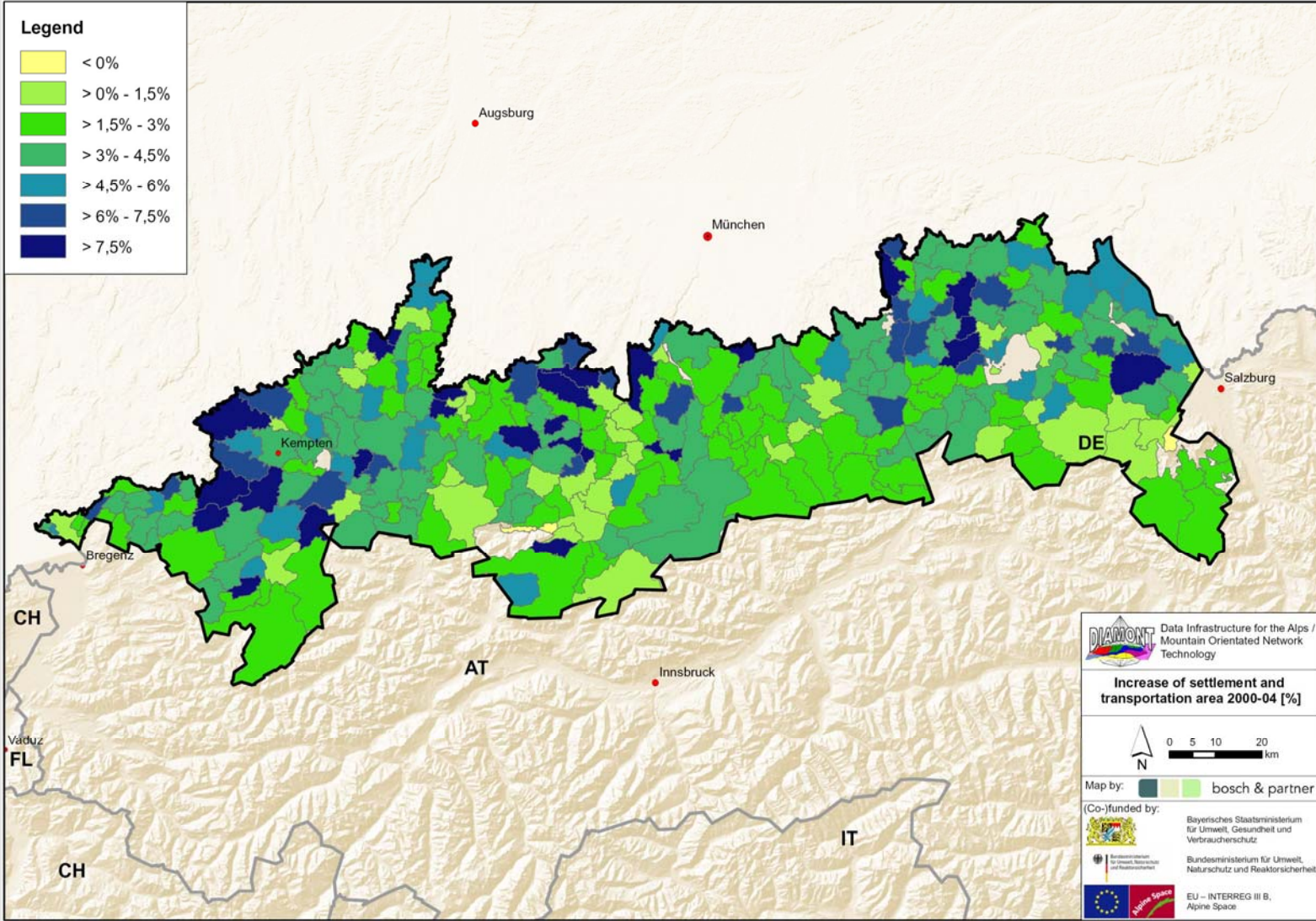


- Calculation of indicators
- Classification of results
- Mapping

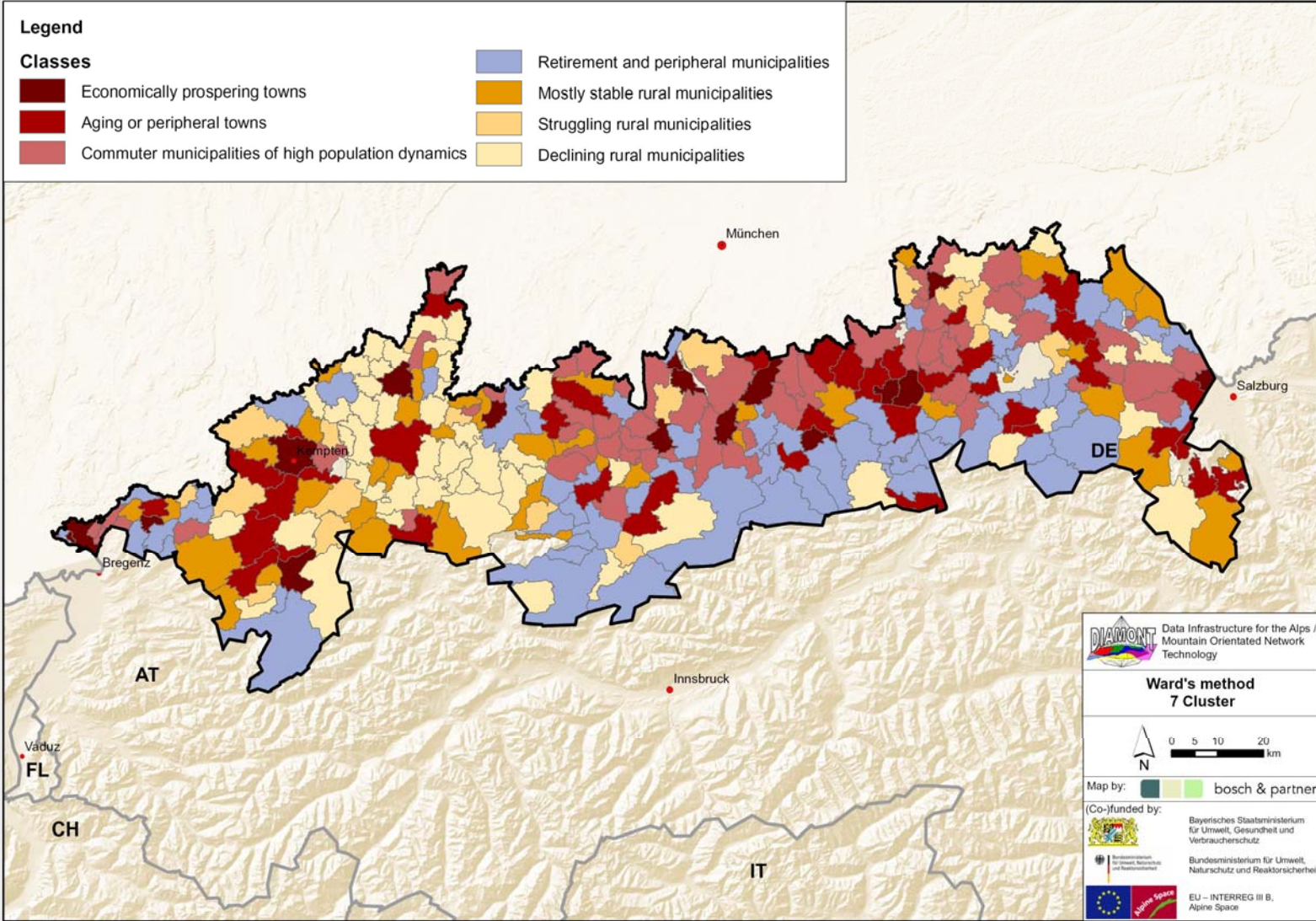


- Cluster analyses
- Regression analyses

Results: Increase of area for settlement and infrastructure (2000-2004)

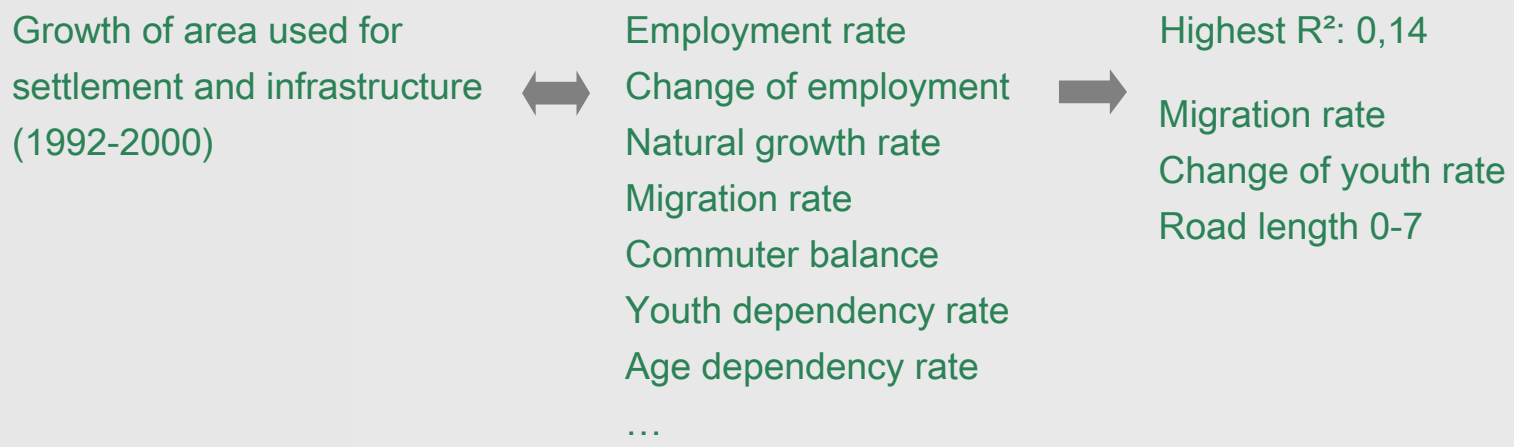


Results: Development types



National Analysis

Regression: Alpine wide available data to German situation of land take



Regression: Indicators possibly influencing land take in German Alpine region

→ No significant correlation to indicators describing the general development of a municipality

Selection of German Test Region

First option: Immenstadt - Sonthofen

Why?



- Fulfilling criteria
- Core cities in the Alps
- Existing contacts, interest in cooperation
- Interest in application of land resource management tools

First contacts



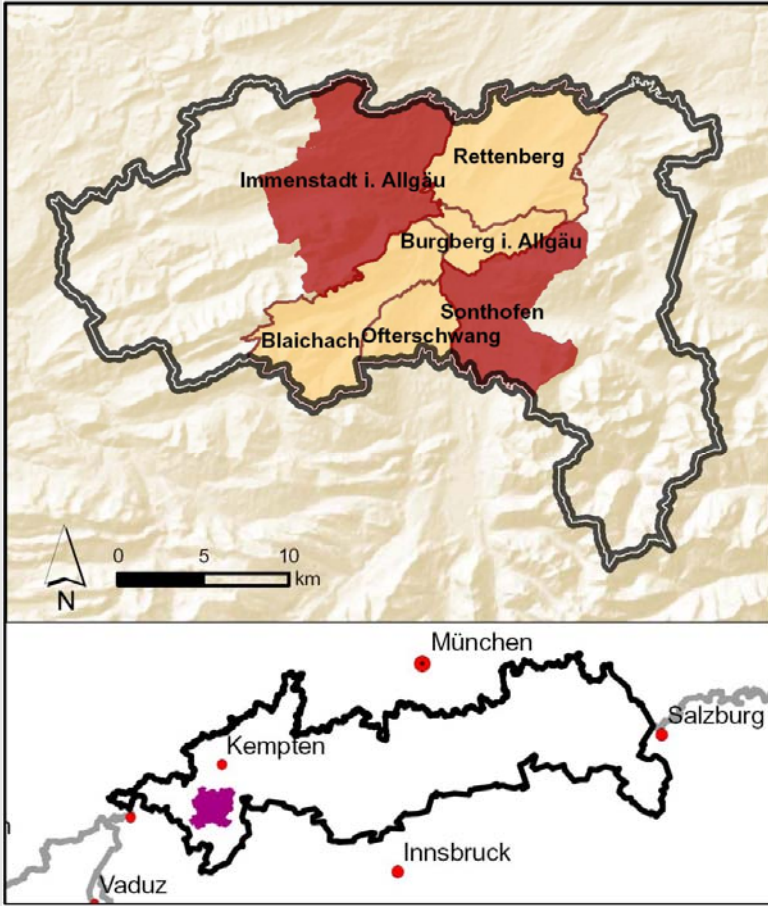
- Consultant for current LEADER-process and regional development concept
- Manager of regional development association

First results of a draft "Context Analysis"



- Continuous land take, partly strong increases
- Diverse development types (WP7) may imply a need for cooperation
- Diverse employment and population development
- Tendency of aging population

Selection of German Test Region



- Core towns:
- Immenstadt (Labour market centre)
 - Sonthofen (District capital, core town according to M. Perlik)

- Surrounding municipalities:
Out-commuter rate to Sonthofen and Immenstadt > 30%
- Blaichach
 - Burgberg i. Allgäu
 - Ofterschwang
 - Rettenberg

Context Analysis

Main Objectives

- Provision of detailed information with respect to the selected problem field
 - Specific quantitative and qualitative data, deepening cause-effect-relationships, analysing the recent status of management
 - Reacting on regional conditions and requirements
- Focus for workshop discussions
- Comparison of workshop results

Context Analysis

Questions to be answered by the Context Analysis

Compilation of data and information

Discussion of results with contact persons in the test region

Elaboration of the SWOT-Analysis???



Causes:

Which factors evoke excessive land take?

- Are their special space consuming enterprises?
- Are there specific problems for using potentials for inner-urban development?

Which factors limit the further development of settlement and infrastructure?

- Are there protected areas or topographical restrictions?

Effects:

- Are natural and semi-natural areas suffering from continuous land take?

- Is fragmentation caused by land take a problem?

Management:

- Do the municipalities participate in programmes or initiatives for better managing their land resources?

- Which potentialities for "land recycling" do exist?



bosch & partner

planen • beraten • forschen

Thank you for your
attentiveness!

Büro Herne
Schaeferstr. 18
44623 Herne

Büro Hannover
Lister Damm 1
30163 Hannover

Büro München
Josephspitalstr. 7
80331 München

www.boschpartner.de