

# INDEX SEMINUM 2021

Botanischer Garten  
Innsbruck



*Innsbrucker Küchenschelle*  
*Pulsatilla oenipontana*

## Botanischer Garten und Alpengarten des Institutes für Botanik der Universität Innsbruck

Sternwartestraße 15A

A-6020 Innsbruck

Tel: +43 512 507-51110

Fax: +43 512 507-51199

E-Mail: [Botanischer-Garten@uibk.ac.at](mailto:Botanischer-Garten@uibk.ac.at)

[www.uibk.ac.at/botany/botanical\\_gardens/](http://www.uibk.ac.at/botany/botanical_gardens/)

[www.facebook.com/BotanischerGartenUniversitatInnsbruck](https://www.facebook.com/BotanischerGartenUniversitatInnsbruck)

### IPEN-Code: IB

### CITES-registration number: AT 015

Samen gesammelt von / Seeds collected by: M. Bodner, M. Imhiavan, A. Kühr, S. Ritzenfeld, M. Ruech, D. Schlorhauser, B. Siller, K. Uhrmann, K. Pagitz, P. Schönschwetter und unseren Lehrlingen und Heizermännchen / our apprentices and the hard working helping crew.

Layout: Cäcilia Lechner Pagitz

### Abkürzungen:

*G*	Samen aus den Gewächshäusern
*F*	Samen aus dem Freigelände
*A*	Samen von Alpinpflanzen
*P*	Samen vom Alpengarten am Patscherkofel; 2000mNN
In	Wildaufsammlung
W/	Samen von kultivierten Pflanzen mit bekannter Wildherkunft....
WAG/	....Samen vom Alpengarten am Patscherkofel
WAH/	....Samen aus dem Alpinhaus; Temperaturminimum etwa -7°C

Hybridisierung ist nicht ausgeschlossen.

### Abbreviations:

*G*	seeds from greenhouse plants
*F*	seeds from outdoor plants
*A*	seeds from alpine plants
*P*	seeds collected in the Alpine Garden on MT. Patscherkofel, 2000m a.s.l.
In	seeds collected from the wild
W/	seeds from cultivated plants with known wild origin....
WAG/	....seeds collected in the Alpine Garden on MT. Patscherkofel
WAH/	....seeds collected in the alpine house; minimum temperature about -7°C

Hybridisation cannot be excluded.

**Nomenklatur / Nomenclatural sources:** <http://www.worldfloraonline.org/> – <https://www.alpinegardensociety.net/encyclopaedia/> – Erhardt W. et al.: Der Große Zander – Enzyklopädie der Pflanzennamen. 19. Auflage 2014. – Aeschmann D., Lauber K. et al.: Flora Alpina. 2004. – Fischer M., Oswald K., Adler W.: Exkursionsflora für Österreich, Liechtenstein, Südtirol. 3. Auflage 2008. – Jelitto L., Schacht W., Simon H.: Die Freiland Schmuckstauden. 5. Auflage 2002. – Egli U. (Hrsg.): Sukkulenten-Lexikon. Bd.1-4, 2001-2003. – Edward F. Anderson: Das große Kakteen Lexikon. 2005. – Hartmann H.E.K. (Ed.): Aizoaceae. Bd. 1 & 2, 2001 – Hammer S. A.: Lithops–Treasures of the Veld. 1999.

### Acanthaceae

- |   |     |                              |                   |
|---|-----|------------------------------|-------------------|
| 1 | *G* | Crossandra flava Hook.       | XX-0-UDE-5-92-7-3 |
| 2 | *G* | Crossandra massaica Mildbr.  | XX-0-IB-020277    |
| 3 | *G* | Ruellia simplex C.Wright     | XX-0-IB-024516    |
| 4 | *G* | Schaueria flavicomma N.E.Br. | XX-0-IB-000010    |

### Aizoaceae

- |   |     |  |                |
|---|-----|--|----------------|
| 5 | *G* | Tanquana hilmarii (L.Bolus) H.Hartmann & Liede | XX-0-IB-000226 |
|---|-----|--|----------------|

### Amaranthaceae

- |   |     |                            |                    |
|---|-----|----------------------------|--------------------|
| 6 | *F* | Chenopodium album L.       | AT-0-IB-017670     |
| 7 | *F* | Chenopodium foliosum Asch. | XX-0-HOH-SYS-13712 |
| 8 | *F* | Spinacia oleracea L.       | XX-0-IB-002543     |

### Amaryllidaceae

- |    |     |  |                |
|----|-----|--|----------------|
| 9  | *A* | Allium carinatum L. subsp. pulchellum (G.Don) Bonnier & Layens                                 | XX-0-IB-000276 |
| 10 | *F* | Allium cepa L.   | XX-0-IB-000277 |
| 11 | *A* | Allium cernuum Roth  | XX-0-IB-009905 |
| 12 | *F* | Allium cristophii Trautv.  | XX-0-IB-008061 |
| 13 | *A* | Allium cyathophorum Bureau & Franch.   | XX-0-IB-026771 |
| 14 | *A* | Allium komarowii Lipsky  | XX-0-IB-021813 |
| 15 | *A* | Allium leucocephalum Turcz. ex Ledeb.<br><i>W/MN-Hentiy Mts., alt. 1200-1500 m, (bulbilis)</i> | MN-0-IB-020991 |
| 16 | *A* | Allium lusitanicum Lam.  | XX-0-IB-000294 |
| 17 | *A* | Allium pseudowinklerianum R.M.Fritsch & F.O.Khass.<br><i>W/KG-Kyzyl</i>                        | KG-0-IB-027875 |
| 18 | *A* | Allium saxatile M.Bieb.<br><i>W/ME-Prokletije-Kuci-Brezovica-Mt. Zijevo-1900m</i>              | ME-0-IB-016904 |
| 19 | *F* | Allium schoenoprasum L.  | XX-0-IB-000292 |
| 20 | *F* | Allium tuberosum Rottl. ex Spreng.   | XX-0-IB-000298 |
| 21 | *A* | Nothoscordum andinum (Poepp.) Kunth ex Fuentes<br><i>W/CL-Portillo</i>                         | CL-0-IB-008501 |

### Anacardiaceae

- |    |     |  |                |
|----|-----|--|----------------|
| 22 | *A* | Cotinus coggygria Scop.<br><i>W/IT-Trentino- Monte Terlago-Lago di Lamar- 46°07'56" N, 11°03'51" E- 735m</i> | IT-0-IB-000430 |
| 23 | *G* | Schinus molle L.   | XX-0-IB-018965 |

### Apiaceae

- |    |     |   |                 |
|----|-----|---|-----------------|
| 24 | *F* | Aethusa cynapium L.   | XX-0-IB-000453  |
| 25 | *F* | Ammi majus L.   | XX-0-Z-19960783 |
| 26 | *F* | Ammi visnaga (L.) Lam.<br><i>W/IT-Sizilien, Palermo, Adiacenze del Lago di Piana degli Albanesi</i> | IT-0-B-0210899  |
| 27 | *F* | Anethum graveolens L.   | XX-0-IB-015189  |
| 28 | *F* | Angelica archangelica L.  | XX-0-IB-000457  |

29	*A*	Angelica brevicaulis (Rupr.) B.Fedtsch. <i>W/KZ-Tien-Shan, Almatiner Naturschutzgebiet</i>	KZ-0-IB-017550
30	*F*	Angelica dahurica (Hoffm.) Benth. & Hook.f. ex Franch. & Sav.	XX-0-IB-019844
31	*F*	Angelica sylvestris L. <i>In/AT/Tirol-Nordtirol-westliche Mittelgebirge-Natters, LKH- 11°21'54.49"E-47°14'26.18"N, 855m (12.09.2021)</i>	AT-0-IB-000461
32	*F*	Anthriscus cerefolium (L.) Hoffm.	XX-0-IB-019656
33	*A*	Athamanta turbith (L.) Brot. <i>W/AL-Bicaj</i>	AL-0-IB-017566
34	*A*	Chaerophyllum coloratum L. <i>W/AL-Bicaj</i>	AL-0-IB-017506
35	*P*	Chaerophyllum hirsutum L. <i>In/AT-Tirol-Mt.Patscherkofel-2000m</i>	AT-0-IB-016750
36	*F*	Chaerophyllum temulum L.	XX-0-IB-000486
37	*F*	Conium maculatum L.	XX-0-IB-000490
38	*F*	Daucus carota L.	XX-0-IB-000494
39	*A*	Eryngium bourgatii Gouan	XX-0-IB-006449
40	*F*	Eryngium campestre L.	XX-0-IB-000501
41	*F*	Ferula assa-foetida L.	XX-0-IB-000507
42	*A*	Ferula glaucopruinosa (Rech.f.) Akhani <i>W/IR-1570m</i>	IR-0-IB-017551
43	*F*	Foeniculum vulgare Mill.	XX-0-IB-006452
44	*F*	Laserpitium latifolium L. <i>W/AT-Tirol-Nordtirol-Karwendel-Thaur, Straße zur Thaurer Alm-11°26'59.37"E-47°18'40.18"N, 1400 m s.m. (17.10.2021)</i>	AT-0-IB-028711
45	*A*	Laserpitium siler L. <i>W/CH</i>	CH-0-IB-024657
46	*F*	Levisticum officinale W.D.J.Koch	XX-0-IB-000524
47	*A*	Ligusticum lucidum Mill. <i>W/IT-Friuli Venezia-Giulia, Alpi Giulie/Julijske Alpe: Sella Nevea-alp Goriuda-bivouac-Elio Marussich-Mt. Sart/Zrd /crd-bivouac-Elio Marussich -Bela Pec</i>	IT-0-IB-023176
48	*A*	Musineon tenuifolium Nutt. <i>W/US-Colorado-Weld Co.-2000m</i>	US-0-IB-000535
49	*F*	Oenanthe pimpinelloides L.	XX-0-IB-015208
50	*A*	Orlaya grandiflora (L.) Hoffm.	XX-0-IB-000542
51	*F*	Pastinaca sativa L.	XX-0-IB-000544
52	*F*	Peucedanum cervaria (L.) Cusson ex Lapeyr. <i>W/AT-Tirol-Nordtirol-Karwendel-Nordkette (Inntalkette)-Innsbruck, Allerheiligen- 11°21'00"E-47°16'28"N, 830m (01.10.2017)</i>	AT-0-IB-025708
53	*A*	Peucedanum oreoselinum (L.) Moench <i>W/AT-Tirol-Pettnau-620m</i>	AT-0-IB-014308
54	*F*	Peucedanum ostruthium (L.) W.D.J.Koch	XX-0-IB-000547
55	*F*	Pimpinella anisum L.	XX-0-HAL-941
56	*A*	Seseli annuum L. <i>W/AT-Kärnten-Dellach-Wieserberg-Sankt Helena-semi-dry meadow(Brometalia erecti), limestone-N46°39'54"-E13°06'30"-884m</i>	AT-0-KL-2017/4214
57	*A*	Seseli montanum L.	XX-0-IB-013630

#### **Apocynaceae**

58	*G*	Adenium obesum (Forssk.) Roem. & Schult.	XX-0-IB-000568
59	*G*	Pachypodium lamerei Drake	XX-0-IB-024158

## Araceae

60 \*G\* Nephthytis afzelii Schott XX-0-IB-000606

## Aristolochiaceae

61 \*G\* Aristolochia labiata Willd. XX-0-IB-006883

62 \*G\* Aristolochia littoralis Parodi XX-0-IB-000639

63 \*F\* Saruma henryi Oliv. XX-0-IB-021607

## Asparagaceae

64 \*G\* Agave macroacantha Zucc. XX-0-IB-015168

65 \*G\* Agave mitis Mart. var. albidior (Salm-Dyck) B.Ullrich XX-0-IB-012499

66 \*G\* Agave vilmoriniana A.Berger XX-0-IB-000066

67 \*F\* Anthericum liliago L. AT-0-IB-000440

*W/AT-Tirol-Nauders-1800m*

68 \*A\* Anthericum ramosum L. XX-0-IB-000442

69 \*G\* Dracaena draco (L.) L. XX-0-IB-003027

70 \*A\* Hastingsia alba (Durand) S.Watson US-0-GENT-20042011

*W/US-California-Siskiyou Co.-West of Weed-Stuarts Spring Road near junction with Old Highway 99- 976m*

71 \*F\* Hosta venusta F.Maek. XX-0-IB-003645

72 \*F\* Muscari comosum (L.) Mill. IT-0-IB-021598

*W/IT-Sardinien*

73 \*A\* Ophiopogon planiscapus Nakai fa. nigrescens XX-0-IB-021493

74 \*A\* Paradisea liliastrum (L.) Bertol. XX-0-IB-008047

75 \*F\* Puschkinia scilloides Adams XX-0-IB-003666

## Asteraceae

76 \*A\* Achillea ageratifolia Benth.& Hook.f. GR-0-IB-017508

*W/GR - Mount Olymp-2200m*

77 \*A\* Achillea clavennae L. XX-0-RAMB-50704

*W/CH-Waadtländer Voralpen-Rochers de Naye-1980m*

78 \*A\* Achillea crithmifolia Waldst. & Kit. AL-0-IB-016788

*W/AL-southern edge of Shija gorge surroundings of Bicaj-1500m*

79 \*P\* Achillea erba-rota All. subsp. moschata (Wulfen) I.Richardson CH OG-20090647

*WAG/CH-Valais-2200m*

80 \*A\* Achillea fraasii Sch.Bip. MK-0-IB-024688

*W/MK-Mavrovo, Mt. Korab: 2 km W of Donje Lukovo pole (Radika river valley); 1910 m- 20°36'7`` E 41°50'36`` N*

81 \*F\* Achillea macrophylla L. IT-0-M-2001/0802

*W/IT-V. Gressoney-V. Giassit, 1700m*

82 \*F\* Achillea millefolium L. XX-0-IB-015188

83 \*A\* Achillea tomentosa L. IT-0-IB-014148

*W/IT-Südtirol-Vinschgau-Obere Leiten-10°35'02"E-46°40'33" N, 1221m (06.08.2019)*

84 \*P\* Adenostyles alliariae (Gouan) A.Kern. AT-0-IB-000768

*In/AT-Tirol-Mt.Patscherkofel-2000m*

85 \*F\* Anacyclus pyrethrum (L.) Lag. XX-0-IB-000769

86 \*A\* Antennaria carpatica (Wahlenb.) Hook. AT-0-IB-000778

*WAG/AT-Hohe Tauern-Grossglockner-2500m*

87	*A*	Antennaria dioica (L.) Gaertn.	XX-0-IB-000779
88	*F*	Anthemis tinctoria L.	XX-0-IB-019336
89	*F*	Arctium lappa L.	XX-0-IB-000789
90	*A*	Arnica angustifolia Vahl <i>W/US-Alaska-Thompson Pass-840m</i>	US-0-IB-018089
91	*A*	Aster alpinus L.	XX-0-IB-007864
92	*A*	Aster alpinus L. var. serpentimontanus (Tamamsch.) Ling <i>W/NP-Samdo-4200m</i>	NP-0-IB-021295
93	*F*	Aster amellus L. <i>W/AT-Tirol-Nordtirol-Karwendel-Nordkette (Inntalkette)-Zirl, Fuß der Martinswand -11°16'40"E-47°16'05"N,700m</i>	AT-0-IB-018742
94	*A*	Aster himalaicus C.B.Clarke	XX-0-IB-000816
95	*A*	Aster pyrenaeus Desf. ex DC. <i>W/ES-Pyrenees</i>	ES-0-M-1983/2347
96	*A*	Berkheya cirsiifolia (DC.) Roessler <i>W/ZA</i>	ZA-0-IB-008865
97	*A*	Berkheya macrocephala J.M.Wood.	XX-0-HAL-13439
98	*A*	Berkheya purpurea (DC.) Benth. & Hook.f. ex Mast. <i>W/ZA-Drakensberge</i>	ZA-0-IB-006457
99	*A*	Bupthalmum salicifolium L. <i>W/AT-Tirol-Pettnau-620m</i>	AT-0-IB-014188
100	*F*	Calendula officinalis L.	XX-0-IB-000839
101	*F*	Carlina vulgaris L. <i>In/AT-Tirol-Nordtirol-Karwendel-Nordkette (Inntalkette)-Innsbruck, Kranebitten nach Zirl-11°18'26.39"E-47°16'2.28"N, 662m (10.10.2021)</i>	AT-0-IB-028713
102	*F*	Centaurea benedicta (L.) L.	XX-0-IB-000887
103	*A*	Centaurea besseriana DC. <i>W/TJ-Gorno-Badakhshan-Panj valley-Kalaikhum village-70°47'17"E, 38°27'24"N-1279m</i>	TJ-0-IB-021211
104	*A*	Centaurea collina L. <i>W/FR-Département Aude-Bei Preixan-ca. 1600m</i>	FR-0-IB-025052
105	*F*	Centaurea jacea L. <i>W/AT-Tirol-Nordtirol-Karwendel-Nordkette (Inntalkette)-Innsbruck, Planötzenhof - Höttinger Graben 11°22'11"E 47°16'57"N 900m</i>	AT-0-IB-018755
106	*F*	Centaurea scabiosa L. <i>W/AT-Tirol-Nordtirol-Karwendel-Nordkette (Inntalkette)-Zirl, Fuß der Martinswand 11°16'40"E 47°16'05"N 700m</i>	AT-0-IB-018754
107	*A*	Centaurea stoebe Tausch <i>W/IT-Oberer Vinschgau-Mals-1000m</i>	IT-0-IB-014508
108	*F*	Chamaemelum nobile (L.) All.	XX-0-IB-000867
109	*A*	Cirsium carlinoides Fisch. <i>W/MK-Mavrovo-Mt. Korab-ridge 5 km NNE of the summit-close to the Albanian border- E 20°34'31", N 41°49'48", 1967m</i>	MK-0-IB-021338
110	*F*	Cirsium erisithales (Jacq.) Scop. <i>W/AT-Kärnten-Lienzner Dolomiten-unter den Anetwänden bis zum Drau-Ufer-12°54'12"E-46°46'17"N, 630-800 m</i>	AT-0-IB-018756
111	*A*	Cirsium glabrum DC. <i>W/ES-Aragón-Alto Gállego, Hoz de Jaca-road to Ibón de los Asnos, v. W Pico Mandilar, screes Ca-0,277361031621695 W 42,6958429813385 N, 1700-1800m (27/09/2018)</i>	ES-0-IB-022332
112	*P*	Cirsium heterophyllum (L.) Hill <i>In/AT-Tirol-Mt.Patscherkofel-2000m</i>	AT-0-IB-000883

113	*F*	<i>Cirsium purpuratum</i> (Maxim.) Matsum. <i>W/JP-Iida-shi-Nagano-Pref., N35°28', E138°00', 1369m</i>	JP-0-FRP-27151
114	*F*	<i>Crepis biennis</i> Lapeyr. <i>W/AT-Tirol-Nordtirol-Karwendel-Pettnau-südlich Dirschenbach-11°11'15.99"E-47°17'3.66"N, 600m</i>	AT-0-IB-018760
115	*F*	<i>Cynara cardunculus</i> L. var. <i>scolymus</i> (L.) Benth.	XX-0-IB-000903
116	*P*	<i>Doronicum austriacum</i> Jacq.	AT-0-IB-000905
117	*A*	<i>Ericameria discoidea</i> (Nutt.) G.L.Nesom <i>W/US-Utah-Beaver Co,-3384m</i>	US-0-IB-018276
118	*A*	<i>Erigeron altaicus</i> Popov	XX-0-IB-024053
119	*A*	<i>Erigeron glacialis</i> (Nutt.) A.Nelson	XX-0-IB-000924
120	*A*	<i>Eriophyllum lanatum</i> (Pursh) J.Forbes var. <i>integrifolium</i> (Hook.) Smiley	XX-0-IB-000930
121	*F*	<i>Eupatorium cannabinum</i> L. <i>W/AT-Tirol- Nordtirol-Karwendel-Nordkette (Inntalkette)-Zirl-Fuß der Martinswand-11°16'40"E-47°16'05"N, 700m</i>	AT-0-IB-018743
122	*A*	<i>Gaillardia aristata</i> Pursh <i>W/US-Montana-Ninemile Prairie-113°32'59"W-46°56'59"N, 1095m (21.07.2018)</i>	US-0-IB-022898
123	*A*	<i>Heteropappus altaicus</i> (Willd.) Novopokr. <i>W/RU- Altai Republic, Ongudaysky District, Ursul River, floodplain meadow, 723m</i>	RU-0-MW-2017-408
124	*A*	<i>Heterotheca jonesii</i> (S.F.Blake) S.L.Welsh & N.D.Atwood <i>W/US-Utah</i>	US-0-IB-000963
125	*F*	<i>Hieracium racemosum</i> Waldst. & Kit. ex Willd. <i>In/AT-Tirol-Nordtirol-Stubaier Alpen-Westliches Mittelgebirge-Ranggen, Itzlranggen-11°14'55.7"E-47°15'14.6"N, 680m (24.10.2021)</i>	AT-0-IB-028712
126	*A*	<i>Hieracium tomentosum</i> L. <i>W/IT-Liguria, Alpi Liguri, valley of Torrente Argentina:S slopes of Mt. Fronté between Passo della Garlenda and Colla Garezzo (GPS-964); 1699 m- 7°45'50`` E 44°02'55`` N- partly dry subalpine meadows</i>	XX-0-IB-000968
127	*A*	<i>Inula ensifolia</i> L.	XX-0-IB-009345
128	*F*	<i>Inula helenium</i> L.	XX-0-IB-000983
129	*P*	<i>Lactuca alpina</i> (L.) A.Gray <i>In/AT-Tirol-Mt.Patscherkofel-2000m</i>	AT-0-IB-000878
130	*A*	<i>Lactuca perennis</i> L. <i>W/IT-Südtirol-Vinschgau-Großboden-10°42'18" E-46°37'53" N, 1445m (06.08.2019)</i>	IT-0-IB-014373
131	*F*	<i>Lactuca sativa</i> L.	XX-0-IB-000991
132	*F*	<i>Lactuca virosa</i> Habl.	XX-0-IB-000993
133	*A*	<i>Leontodon incanus</i> (L.) Schrank <i>W/AT-Tirol-Zirl</i>	AT-0-IB-016941
134	*A*	<i>Leontopodium alpinum</i> Colm. ex Cass. <i>W/AT-Tirol-Stubaier Alpen-Regensburger Hütte</i>	XX-0-IB-007593
135	*A*	<i>Leontopodium conglobatum</i> (Turcz.) Hand.-Mazz.	XX-0-IB-001011
136	*A*	<i>Leontopodium jacotianum</i> Beauverd	XX-0-IB-007898
137	*A*	<i>Leontopodium kurilense</i> Takeda <i>W/NP-Nepal-Samdo-3800m</i>	RU-0-IB-025993
138	*A*	<i>Leontopodium ochroleucum</i> Beauverd <i>W/CN-Tian-Shan Mts.-3100m</i>	XX-0-IB-001007
139	*F*	<i>Leucanthemum vulgare</i> (Vaill.) Lam. <i>W/AT-Kärnten-Drautal-Grafenstein-Saager-14°29'38.51"E-46°34'58.50"N, 500-600m</i>	AT-0-IB-018747

140	*A*	<i>Liatris spicata</i> (L.) Willd. <i>W/US-Michigan</i>	US-0-IB-024054
141	*F*	<i>Matricaria chamomilla</i> L.	XX-0-IB-001034
142	*A*	<i>Rhaponticum coniferum</i> (L.) Greuter <i>W/FR-Perpignan</i>	FR-0-IB-001019
143	*A*	<i>Scorzonera austriaca</i> Willd. <i>W/AT-Niederösterreich-Eichkogel-500m</i>	AT-0-IB-001067
144	*F*	<i>Scorzonera hispanica</i> L.	XX-0-IB-015213
145	*F*	<i>Senecio jacobaea</i> L.	XX-0-IB-001091
146	*P*	<i>Senecio ovatus</i> Willd. <i>In/AT-Tirol-Mt.Patscherkofel-2000m</i>	AT-0-IB-001096
147	*F*	<i>Silybum marianum</i> (L.) Gaertn.	XX-0-IB-001106
148	*F*	<i>Solidago virgaurea</i> L.	XX-0-IB-001110
149	*F*	<i>Staehelina uniflosculosa</i> Sibth. & Sm. <i>W/AL-Bjeshkët e Namuna-Umgebung von Theth (27.08.2014)</i>	AL-0-IB-018757
150	*A*	<i>Stokesia laevis</i> (Hill) Greene	XX-0-IB-001116
151	*F*	<i>Tanacetum parthenium</i> (L.) Sch.Bip.	XX-0-IB-001122
152	*F*	<i>Tanacetum vulgare</i> L.	XX-0-IB-001126
153	*F*	<i>Telekia speciosa</i> (Schreb.) Baumg.	RO-0-IAGB20171993W
154	*A*	<i>Tripleurospermum caucasicum</i> (Willd.) Hayek <i>W/GE-Mestia</i>	GE-0-IB-021054

#### **Basellaceae**

155	*G*	<i>Basella alba</i> L.	XX-0-IB-001177
-----	-----	------------------------	----------------

#### **Begoniaceae**

156	*G*	<i>Begonia mollicaulis</i> Irmsch.	XX-0-IB-016157
157	*G*	<i>Begonia subvillosa</i> Klotzsch	XX-0-IB-012398
158	*G*	<i>Begonia tomentosa</i> Schott	XX-0-IB-016117
159	*G*	<i>Begonia ulmifolia</i> Willd.	XX-0-IB-001207
160	*G*	<i>Begonia wallichiana</i> Lehm.	XX-0-HOH-GEW-1340

#### **Berberidaceae**

161	*G*	<i>Nandina domestica</i> Thunb.	XX-0-IB-016075
-----	-----	---------------------------------	----------------

#### **Bignoniaceae**

162	*A*	<i>Incarvillea compacta</i> Maxim.	XX-0-IB-007478
163	*A*	<i>Incarvillea olgae</i> Regel <i>W/TJ-Gorno-Badakhshan-Western Pamir-S of the Koytezek pass (Pamir Highway)-E 72°45'21",N 37°29'4"- 4228m</i>	TJ-0-IB-021215

#### **Boraginaceae**

164	*F*	<i>Cynoglossum officinale</i> L. <i>W/AT-Tirol-Nordtirol-Karwendel-Nordkette (Inntalkette), Zirl, Fuß der Martinswand-11°16'40"E-47°16'05"N, 700m</i>	AT-0-IB-018771
165	*A*	<i>Lappula squarrosa</i> (Retz.) Dumort. <i>W/IT-Südtirol-Vinschgau-Obere Leiten-10°35'02"E-46°40'33" N, 1221m (06.08.2019)</i>	IT-0-IB-014250
166	*F*	<i>Lithospermum officinale</i> L.	XX-0-IB-001291



167	*A*	Moltkia petraea (Tratt.) Griseb. <i>W/AL-Theth-900m</i>	AL-0-IB-001301
168	*A*	Onosma alboroseum Fisch. et C.A.Mey. <i>W/TR-Ala Dag-1700m</i>	TR-0-IB-001317
169	*A*	Onosma dichroantha Boiss. <i>W/TJ-Gorno-Badakhshan-Panj valley-Kalaikhum village-70°47'17"E, 38°27'24"N-1279m</i>	TJ-0-IB-021212
170	*A*	Onosma echioides L. <i>W/IT-Abruzzen-Sulmona</i>	IT-0-IB-026373
171	*A*	Onosma simplicissima L. <i>W/KZ-Aqtöbe-Aktobe-hills about 10 km NE of the city center-260m</i>	KZ-0-IB-018208
172	*A*	Onosma stellulatum Waldst. & Kit. <i>W/ME-Prokletij-Kuci-Brezovica - Mt. Zijevo-1900m</i>	ME-0-IB-017609
173	*A*	Onosma taurica Willd.	XX-0-IB-016886
174	*A*	Solenanthes apenninus (L.) Fisch. & C.A.Mey <i>W/IT-Primo Colle-Pescocostanzo (AQ)-1400m</i>	IT-0-M-2002/2076

### **Brassicaceae**

175	*A*	Aethionema capitatum Boiss. & Balansa <i>W/TR-Ala Dag-2100m</i>	TR-0-IB-001337
176	*A*	Aethionema saxatile (L.) R.Br.	XX-0-IB-012748
177	*F*	Alliaria petiolata (M.Bieb.) Cavara & Grande	XX-0-IB-001347
178	*A*	Alyssum handelii Hayek	XX-0-IB-018433
179	*A*	Alyssum neglectum Magauer, Frajman & Schönschwetter <i>W/AT-Steiermark-Nordöstliche Kalkalpen-Hochschwab, entlang des Anstiegs von der Fölzalpe zum Fölzstein-15°11'9" E 47°35'53" N 1600m</i>	AT-0-IB-017469
180	*A*	Alyssum scardicum Wettst. <i>W/ME-Prokletije-Mt. Kerrshat e Mdhaj-Mt. Marjashi/Marijas</i>	ME-0-IB-016821
181	*F*	Arabis alpina L. subsp. caucasica (Willd.) Briq.	XX-0-IB-001369
182	*A*	Aubrieta columnae Guss. subsp. croatica (Schott, Nyman & Kotschy) Mattf. <i>W/BA-Dinara-from the village Gubin to Mt. Veliki Troglav-1900m</i>	BA-0-IB-017115
183	*F*	Aurinia saxatilis (L.) Desv.	XX-0-IB-007938
184	*A*	Brassica baldensis Prosser & Bertolli <i>W/IT- Monte Baldo-2100m</i>	IT-0-IB-017633
185	*F*	Brassica rapa L. <i>W/AT-Salzburg-Tennengau-Hallein-Gamp-Gewerbegebiet Gamp-E013°06'08"-N47°40'23" 440m</i>	AT-0-SZU-2016-240
186	*F*	Camelina sativa (L.) Crantz	XX-0-IB-015191
187	*A*	Coluteocarpus vesicaria (L.) Holmboe <i>W/TR-Palandoken-2800m</i>	TR-0-IB-001402
188	*A*	Draba aizoides L.	XX-0-IB-001410
189	*A*	Draba bertisceae D.Lakusic et Stevan. <i>W/ME-Prokletije-Mt. Kom Kucki-2200m</i>	ME-0-IB-017114
190	*A*	Draba hispanica Boiss. <i>W/MA-High Atlas-Jbel Toubkal-2200m</i>	MA-0-IB-001414
191	*A*	Draba polytricha Ledeb. <i>W/TR-Van-Caldiran-Dogubayazit plain-about 15.1 km ESE Mount Tendürek (Tendürek Dagi)</i>	TR-0-IB-008928

192	*F*	<i>Erucastrum nasturtiifolium</i> (Poir.) O.E.Schulz <i>W/AT-Tirol-Nordtirol-Karwendel-Nordkette (Inntalkette) - Zirl, Fuß der Martinswand-11°16'40"E-47°16'05"N, 700m</i>	AT-0-IB-018784
193	*F*	<i>Erysimum cheiri</i> (L.) Crantz	XX-0-HAL-900
194	*A*	<i>Erysimum jugicola</i> Jord. <i>W/IT-Piemont-2200m</i>	IT-0-IB-009749
195	*A*	<i>Erysimum nivale</i> (Greene) Rydb. <i>W/US-Colorado-3600m</i>	US-0-IB-001438
196	*F*	<i>Erysimum rhaeticum</i> (Schleich. ex Hornem.) DC. <i>W/AT-Tirol-Nordtirol-Oberes Gericht,Nauders-10° 30'51.6"E-46°52'45.6"N</i>	AT-0-IB-021638
197	*A*	<i>Erysimum rhaeticum</i> (Schleich. ex Hornem.) DC. <i>W/IT-Südtirol-Vinschgau-Obere Leiten-10°35'02"E-46°40'33" N, 1221m, (06.08.2019)</i>	IT-0-IB-014298
198	*A*	<i>Fibigia clypeata</i> (L.) Medik.	XX-0-IB-001443
199	*F*	<i>Iberis amara</i> L.	XX-0-IB-019822
200	*A*	<i>Iberis saxatilis</i> L.	XX-0-IB-001452
201	*A*	<i>Iberis simplex</i> DC. <i>W/TR-Bolkar Dag-2600m</i>	TR-0-IB-001455
202	*F*	<i>Isatis tinctoria</i> L.	XX-0-IB-001458
203	*F*	<i>Lunaria rediviva</i> L. <i>W/DE-Bayern-Bei Flintsbach am Inn-Petersberg-12°7'30"-47°42'39"N</i>	DE-0-IB-018786
204	*A*	<i>Matthiola montana</i> Boiss. <i>W/TR-Kaz-Dag-1700m</i>	TR-0-IB-001474
205	*A*	<i>Noccaea caerulescens</i> J.Presl & C.Presl	XX-0-IB-001500
206	*F*	<i>Sisymbrium strictissimum</i> L.	XX-0-IB-018792

### **Bromeliaceae**

207	*G*	<i>Aechmea coelestis</i> (K.Koch) E.Morren	XX-0-IB-013488
208	*G*	<i>Aechmea lueddemanniana</i> (K.Koch) Mez	XX-0-IB-001511
209	*G*	<i>Aechmea mcvaughii</i> L.B.Sm.	XX-0-IB-019085
210	*G*	<i>Fosterella villosula</i> (Harms) L.B.Sm.	XX-0-IB-014992

### **Cactaceae**

211	*G*	<i>Astrophytum myriostigma</i> Lem.	XX-0-IB-001559
212	*G*	<i>Aylostera spagazziniana</i> Backeb.	XX-0-IB-001562
213	*G*	<i>Frailea gracillima</i> (Lem.) Britton & Rose	XX-0-IB-001691
214	*G*	<i>Frailea phaeodisca</i> (Speg.) Backeb. & F.M.Knuth	XX-0-IB-017015
215	*G*	<i>Frailea pumila</i> (Lem.) Britton & Rose	XX-0-IB-001699
216	*G*	<i>Frailea pygmaea</i> (Speg.) Britton & Rose	XX-0-IB-001701
217	*G*	<i>Frailea schilinzkyana</i> (F.Haage ex K.Schum.) Britton & Rose	XX-0-IB-001695
218	*G*	<i>Gymnocalycium baldianum</i> Speg.	XX-0-IB-001715
219	*G*	<i>Gymnocalycium gibbosum</i> Pfeiff.	XX-0-IB-001718
220	*G*	<i>Gymnocalycium ochoterena</i> Backeb.	XX-0-IB-013670
221	*G*	<i>Gymnocalycium oenanthemum</i> Backeb.	XX-0-IB-007760
222	*G*	<i>Gymnocalycium quehlianum</i> Berger	XX-0-IB-001724
223	*G*	<i>Parodia ayopayana</i> Cárdenas	XX-0-IB-001999
224	*G*	<i>Parodia concinna</i> (Monv.) N.P. Taylor subsp. <i>agnetae</i> (Vliet) Hofacker	XX-0-IB-011145
225	*G*	<i>Parodia erubescens</i> (Osten) D.R. Hunt	XX-0-IB-001955
226	*G*	<i>Parodia leninghausii</i> F.H.Brandt	XX-0-IB-006940

227	*G*	Parodia mammulosa (Lem.) N.P. Taylor	XX-0-IB-011165
228	*G*	Parodia mueller-melchersii (Fric ex Backeb.) N.P. Taylor	XX-0-IB-017016
229	*G*	Parodia muricata (Otto) Hofacker	XX-0-IB-006958
230	*G*	Parodia ottonis (Lehm.) N.P. Taylor	XX-0-IB-015899
231	*G*	Parodia schumanniana F.H.Brandt	XX-0-IB-006978
232	*G*	Parodia scopa (Spreng.) N.P. Taylor subsp. succinea (F. Ritter) Hofacker & P.J. Braun	XX-0-IB-017014
233	*G*	Pilocereus leucocephalus (Poselger) Byles & G.D. Rowley	XX-0-IB-002066
234	*G*	Rebutia minuscula K.Schum.	XX-0-IB-002087
235	*G*	Weingartia neocumingii Backeb.	XX-0-IB-002151

### Campanulaceae

236	*G*	Azorina vidalii (H.C.Watson) Feer	PT-0-M2012/2554
237	*A*	Campanula fenestrellata Feer subsp. istriaca (Feer) Damboldt	XX-0-IB-013949
238	*F*	Campanula lanata Friv.	XX-0-IB-025661
239	*F*	Campanula persicifolia L. <i>W/AT-Kärnten-Drautal-Grafenstein, Saager 14°29'38.51"E 46°34'58.50"N 500-600m</i>	AT-0-IB-018794
240	*A*	Codonopsis clematidea C.B.Clarke <i>W/KZ-Almatiner Naturschutzgebiet-Tien Shan-Trans-Ili Alatau-first to third Kolsay lake and peak SW third Kolsay lake-1800-3500m</i>	KZ-0-IB-002229
241	*A*	Edraianthus graminifolius (L.) A.DC. <i>W/ME-Prokletije-Valley Mecukomlje-Mt. Kom Kucki</i>	ME-0-IB-016800
242	*A*	Edraianthus parnassicus (Boiss. & Spruner) Halácsy	XX-0-IB-002237
243	*A*	Edraianthus pumilio (Port. ex Schult.) A.DC.	XX-0-IB-002238
244	*F*	Jasione laevis Lam.	XX-0-Bern-19901312
245	*A*	Lobelia cardinalis L.	XX-0-IB-002251
246	*F*	Phyteuma ovatum Honck. <i>W/AT-Tirol-Nordtirol-Karwendel-Nordkette (Inntalkette)-Innsbruck, Planötzenhof-Höttinger Graben 11°22'11"E 47°16'57"N 900m</i>	AT-0-IB-018797
247	*A*	Phyteuma scheuchzeri All.	XX-0-IB-002260

### Cannabaceae

248	*F*	Cannabis sativa s.l. L.	XX-0-IB-004148
-----	-----	-------------------------	----------------

### Cannaceae

249	*G*	Canna indica L.	XX-0-IB-002274
-----	-----	-----------------	----------------

### Caprifoliaceae

250	*A*	Morina longifolia Wall. ex DC. <i>W/NP.04</i>	NP-0-IB-006454
251	*A*	Patrinia intermedia (Hornem.) Roem. & Schult. <i>W/KZ-Almaty-Tien Shan-Trans-Ili Alatau-between Medeu and skiing resort Shymbulak-2100m</i>	KZ-0-IB-006014
252	*A*	Scabiosa canescens Waldst. & Kit. <i>W/BA-Cvrsnica-Mt.Plocno-1500m</i>	BA-0-IB-014594
253	*F*	Scabiosa columbaria L. <i>W/AT-Tirol-Nordtirol-Karwendel-Zirl, Eigenhofen-11°12'51.6"E-47°16'50.8"N, 640m</i>	AT-0-IB-018804
254	*A*	Scabiosa crenata Cirillo <i>W/AL-Bicaj</i>	AL-0-IB-017607
255	*A*	Scabiosa graminifolia L.	XX-0-IB-003018

- 256 \*A\* *Scabiosa lucida* Vill. AT-0-IB-018598  
*W/AT-Steiermark-Steirersee-47°35'53.70"N-14°2'6.72"E*
- 257 \*F\* *Succisa pratensis* Moench AT-0-IB-024565  
*W/AT-Tirol: Nordtirol-Karwendel-Seefeld, Neuleutasch-11°10'47.51"E-47°20'51.55"N, 1210m*
- 258 \*F\* *Valeriana officinalis* L. XX-0-IB-006020

### Caricaceae

- 259 \*G\* *Carica papaya* L. XX-0-IB-002308

### Caryophyllaceae

- 260 \*F\* *Agrostemma githago* L. XX-0-IB-002309
- 261 \*A\* *Cerastium carinthiacum* Vest IT-0-IB-016860  
*W/IT-Trentino-Alto Adige: Trento-northern surroundings of Passo di San Pellegrino- Lom Picol-2457m-E  
46.39944444,N11.79888889- scree slopes-limestone*
- 262 \*A\* *Cerastium grandiflorum* Waldst. & Kit. ME-0-IB-016897  
*W/ME-Prokletije-Kuci-Brezovica-Mt.Zijevo-786m*
- 263 \*F\* *Cerastium tomentosum* L. IT-0-IB-009166  
*W/IT-Mt. Velturin C 070/1*
- 264 \*A\* *Dianthus angrenicus* Vved. KZ-0-IB-018355  
*W/KZ-Almaty-Tien Shan-Trans-Ili Alatau between Medeu and skiing resort Shymbulak-2100m*
- 265 \*F\* *Dianthus carthusianorum* L. AT-0-IB-018813  
*W/AT-Tirol-Nordtirol-Karwendel-Zirl, Eigenhofen-11°12'37.26"E 47°16'49.14"N, 620m*
- 266 \*A\* *Dianthus cretaceus* Adam GE-0-IB-021051  
*W/GE-Samtskhe-Javakheti-2050m*
- 267 \*A\* *Dianthus integer* Vis. BA-0-IB-014869  
*W/BA-Bosna, Dinara: from the village Gubin to Mt. Veliki Troglav-1500m, Limestone*
- 268 \*A\* *Dianthus myrtinervius* Griseb. GR-0-IB-017486  
*W/GR-MT.Ossa-1600m*
- 269 \*A\* *Dianthus pinifolius* Sm. subsp. *serbicus* Wettst. GR-0-IB-016855  
*W/GR - 1000m*
- 270 \*A\* *Eremogone capillaris* (Poir.) Fenzl var. *americana* (Maguire) R.L.Hartm. & Rabeler US-0-IB-002314  
*W/US-Montana-Mt. Reynolds-2450m*
- 271 \*A\* *Eremogone ledebouriana* (Fenzl) Ikonn. XX-0-IB-002321
- 272 \*A\* *Eremogone longifolia* (M.Bieb.) Fenzl XX-0-IB-021071
- 273 \*F\* *Gypsophila paniculata* L. XX-0-HAL-890
- 274 \*A\* *Gypsophila repens* L. AT-0-IB-016541  
*W/AT-Tirol-Schmirmtal-1900m*
- 275 \*F\* *Lychnis viscaria* L. AT-0-IB-018816  
*W/AT-Tirol-Nordtirol-Stubaier Alpen-Westliches Mittelgebirge-Axams, Zifres 11°15'45.9"E 47°14'31.9"N 775m*
- 276 \*A\* *Minuartia kashmirica* (Edgew. & Hook. f.) Mattf. NP-0-IB-002432  
*W/NP-Langtang*
- 277 \*A\* *Minuartia pestalozzae* Mattf. TR-0-IB-002436  
*W/TR-Dedegol Dag-2000m*
- 278 \*A\* *Minuartia verna* (L.) Hiern RO-0-IB-002441  
*W/RO-Balea Lac-2030m*
- 279 \*A\* *Paronychia kapela* (Hacq.) A.Kern. XX-0-IB-002445

280	*A*	Saponaria cyprea Boiss. <i>W/CY-Trodos Gebirge-1200m</i>	CY-0-IB-002455
281	*F*	Saponaria officinalis L.	XX-0-IB-002461
282	*A*	Saponaria pulvinaris Boiss. <i>W/TR-Sultan Dag-2300m</i>	TR-0-IB-002463
283	*A*	Saponaria x sündermannii hort.	XX-0-IB-002466
284	*P*	Silene alpestris Jacq.	XX-0-IB-009746
285	*A*	Silene alpestris Jacq. <i>W/IT-Friuli Venezia-Giulia-Mt. Sart-2200m</i>	IT-0-IB-002474
286	*A*	Silene araratica Schischk. <i>W/GR-Olymp-1980m</i>	GR-0-IB-016879
287	*A*	Silene coronaria (Desr.) Clairv. ex Rchb.	XX-0-IB-007398
288	*A*	Silene flos-jovis (L.) Greuter & Burdet <i>W/FR-Dauphiné-Écrins-Gruppe-Ailefroide, Weg zum Refuge du Sélé, vor dem Écrin-Nationalpark-6°26'31"E, 44°52'54"N-1500m</i>	FR-0-IB-025873
289	*A*	Silene jeniseensis Willd. <i>W/RU-Altai-2100m</i>	RU-0-IB-011186
290	*A*	Silene nutans L. <i>W/AT-Tirol-Inzing-Schindeltal-750m</i>	AT-0-IB-014275
291	*A*	Silene plankii C.L. Hitchc. & Maguire <i>W/US-Texas-El Paso Co.-2085m</i>	US-0-IB-002495
292	*A*	Silene saxifraga L.	XX-0-IB-014929
293	*F*	Silene vulgaris (Moench) Garcke <i>W/AT-Kärnten-Drautal-Grafenstein, Saager-14°29'38.51"E 46°34'58.50"N, 500-600m</i>	AT-0-IB-018815

### Cistaceae

294	*A*	Cistus creticus L. <i>W/AL - Tomorr</i>	AL-0-IB-002548
295	*F*	Cistus laurifolius L.	XX-0-IB-002546
296	*A*	Helianthemum alpestre (L.) DC.	XX-0-IB-002551
297	*A*	Helianthemum apenninum (L.) Mill. <i>W/FR-SW-Alps</i>	FR-0-IB-002552
298	*A*	Helianthemum canum Baumg. <i>W/ME - Visitor</i>	ME-0-IB-002554
299	*F*	Helianthemum nummularium (L.) Mill. subsp. obscurum (Celak.) Holub <i>W/AT-Tirol-Nordtirol-Karwendel-Nordkette (Inntalkette)-Zirl, Weg zur Ruine Fragenstein-11°14'27.87"E-47°16'39.12"N, 680m</i>	AT-0-IB-024572
300	*A*	Helianthemum violaceum (Cav.) Pers. <i>W/ES-Andalusien, Jaén, Sierra del Segura, 1050m</i>	ES-0-BERN-1989/333 W S

### Cleomaceae

301	*F*	Cleome spinosa Jacq.	XX-0-IB-007941
-----	-----	----------------------	----------------

### Convolvulaceae

302	*G*	Ipomoea x sloteri (House) Ooststr.	XX-0-IB-028074
-----	-----	------------------------------------	----------------

### Crassulaceae

303	*G*	Echeveria lilacina Kimnach & Moran <i>W/MX-Nuevo Leon (near Rayones)</i>	MX-0-IB-015068
304	*A*	Orostachys spinosus (L.) Sweet <i>W/RU-Altai-Chuya Steppe</i>	RU-0-IB-002767
305	*A*	Orostachys thyrsoflora Fisch. <i>W/RU-Altai-Chagan Uzun</i>	RU-0-IB-016980
306	*A*	Rhodiola ishidaei Hara <i>W/JP</i>	JP-0-IB-002778
307	*A*	Rosularia sempervivoides (Fischer ex M. Bieberstein) Boriss. <i>W/AM-Vajots'dzor-mountain ridge S of the village Gnishik (S of Jeghegnazdor)- E 45° 17' 51", N 39° 38' 29"- 2256m</i>	AM-0-IB-002795
308	*F*	Sedum roseum (L.) Scop.	XX-0-IB-002786
309	*A*	Sedum tatarinowii Maxim.	XX-0-IB-002849
310	*F*	Sempervivum tectorum L.	XX-0-IB-002869

#### Cucurbitaceae

311	*G*	Luffa operculata (L.) Cogn.	XX-0-IB-027675
312	*G*	Momordica charantia L.	XX-0-CLA-1606
313	*G*	Trichosanthes cucumerina L.	XX-0-IB-017709

#### Cyatheaceae

314	*G*	Cyathea australis Domin	XX-0-IB-015623
-----	-----	-------------------------	----------------

#### Cyperaceae

315	*A*	Carex atosquama Mack. <i>W/US-Montana-Bluebird Lake-Kootenai-1600m</i>	US-0-IB-002932
316	*F*	Carex flacca Scherb.	XX-0-IB-002943
317	*F*	Carex muricata L. <i>W/AT-Tirol-Nordtirol-Karwendel-Nordkette (Inntalkette)-Innsbruck-Allerheiligen-11°21'00"E-47°16'28"N, 830m</i>	AT-0-IB-021632
318	*A*	Carex muskingumensis Schwein.	XX-0-IB-002950
319	*G*	Cyperus alternifolius L.	XX-0-IB-002967
320	*G*	Cyperus papyrus L.	XX-0-IB-002973
321	*G*	Cyperus textilis Thunb.	XX-0-TUEB-7448
322	*F*	Schoenoplectus tabernaemontani (C.C.Gmel.) Palla	XX-0-IB-021592

#### Euphorbiaceae

323	*F*	Euphorbia lathyris L.	XX-0-IB-003186
324	*F*	Ricinus communis L.	XX-0-IB-003223

#### Fabaceae

325	*G*	Abrus precatorius L.	XX-0-UNKAR-2011-6288
326	*A*	Anthyllis montana L. subsp. jaquinii (Rchb. f.) Rohlena	XX-0-IB-003234
327	*F*	Anthyllis vulneraria L.	XX-0-IB-003237
328	*A*	Astragalus alopecurus Pall. <i>W/FR-Queyras-über Aiguille</i>	FR-0-IB-016988
329	*A*	Astragalus autranii Bald. <i>W/AL-Mali i Tomorit-Skrapar-2200m</i>	AL-0-IB-016767

330	*A*	Astragalus falcatus Lam. <i>W/TJ-Gorno-Badakhshan-western Pamir-valley of Gunt river, village Vankala-E 72°10'42", N 37°42'12"- 3038m</i>	TJ-0-IB-021293
331	*F*	Baptisia australis (L.) R.Br.	XX-0-IB-009212
332	*F*	Baptisia tinctoria (L.) Vent.	XX-0-GZU-98 700469
333	*G*	Caesalpinia pulcherrima (L.) Sw.	XX-0-IB-006882
334	*A*	Cytisus hirsutus L.	XX-0-IB-013068
335	*G*	Cytisus maderensis (Lowe) A. Chev.	XX-0-IB-003290
336	*A*	Dalea purpurea Vent. <i>W/US-Utah-Garfield Co.-1675m</i>	US-0-IB-013676
337	*F*	Galega officinalis L.	XX-0-IB-003302
338	*A*	Genista radiata (L.) Scop. <i>W/IT-Tremalzo</i>	IT-0-NGOET-1796
339	*A*	Genista sagittalis L.	XX-0-IB-007699
340	*F*	Laburnum anagyroides Medik.	XX-0-IB-003327
341	*G*	Lotus sessilifolius DC. <i>W/ES-Kanaren, El Hierro, El Pinar, La Restinga, Kanarische Halophytenvegetation, 4m</i>	ES-0-B-1880111
342	*F*	Lupinus luteus L.	XX-0-IB-003345
343	*F*	Melilotus officinalis (L.) Pall.	XX-0-IB-003355
344	*G*	Mimosa polycarpa Kunth var. spagazzinii Burkart	XX-0-IB-009385
345	*G*	Mimosa pudica L.	XX-0-IB-004145
346	*A*	Oxytropis campanulata Vassilcz.	XX-0-IB-003369
347	*A*	Oxytropis campestris (L.) DC. subsp. tyroliensis (Fritsch) Leins & Merxm. <i>W/AT-Tirol-Nordtirol-Stubaier Alpen-S-Grat des Roten Kopfs-Roter Kopf-Kesselspitze-11°21'29"E - 47°5'53"N, 2400-2700m</i>	AT-0-IB-022672
348	*A*	Oxytropis halleri Koch <i>W/AT-Nauders-2000m</i>	AT-0-IB-003368
349	*F*	Phaseolus coccineus L.	XX-0-IB-016534
350	*F*	Phaseolus vulgaris L. 'Black Turtle' cult.	XX-0-IB-016532
351	*F*	Phaseolus vulgaris L. 'Yin Yang' cult.	XX-0-BONN-31352
352	*F*	Pisum sativum L.	XX-0-IB-021751
353	*F*	Securigera varia (L.) Lassen	XX-0-IB-003285
354	*F*	Trifolium rubens L.	XX-0-IB-003412
355	*F*	Trigonella foenum-graecum L.	XX-0-IB-003414
356	*F*	Vicia cracca L. <i>W/AT-Tirol-Nordtirol-Karwendel-Petttau, südlich Dirschenbach-11°11'15.99"E-47°17'3.66"N-600m</i>	AT-0-IB-018892
357	*F*	Vicia faba L.	XX-0-IB-013688

### **Gentianaceae**

358	*A*	Eustoma grandiflorum (Raf.) Shinnery <i>W/US-Colorado-Adams Co.-1400m</i>	US-0-IB-003466
359	*P*	Gentiana acaulis L. <i>In/AT-Tirol-Mt.Patscherkofel-2000m</i>	AT-0-IB-003467
360	*A*	Gentiana asclepiadea L. <i>W/AT-Nördliche Kalkalpen-600m</i>	AT-0-IB-003471
361	*A*	Gentiana cruciata L. <i>W/SK-Kleine Karpaten-Bartalová</i>	SK-0-IB-022691
362	*A*	Gentiana dinarica Beck	XX-0-IB-003480
363	*A*	Gentiana lutea L.	XX-0-IB-021573

364 \*A\* Gentiana paradoxa Alboff XX-0-IB-003495

### **Geraniaceae**

365 \*F\* Erodium cicutarium (L.) L'Hér. XX-0-IB-018901

366 \*A\* Geranium sanguineum L. XX-0-IB-003541

367 \*G\* Pelargonium luridum (Andrews) Sweet XX-0-IB-012560

### **Gesneriaceae**

368 \*A\* Ramonda serbica Pancic AL-0-IB-003583  
*W/AL-Bicaj-1500m*

### **Gnetaceae**

369 \*G\* Gnetum gnemon L. XX-0-IB-003603

### **Hypericaceae**

370 \*A\* Hypericum olympicum L. GR-0-IB-002585  
*W/GR-Thessalien-Nomos Magnisias-Pilion Gebirge-1300m*

371 \*A\* Hypericum orientale L. RU-0-IB-021191  
*W/RU-Kaukasus-2000m*

372 \*F\* Hypericum perforatum L. AT-0-IB-018905  
*W/AT-Tirol-Nordtirol-Stubaier Alpen-Westliches Mittelgebirge-Inzing-Lehntal -11°12'13"E-47°15'48"N, 695m*

### **Iridaceae**

373 \*G\* Freesia laxa (Thunb.) Goldblatt & J.C.Manning XX-0-IB-003698

374 \*A\* Iris acutiloba C.A.Mey. subsp. lineolata (Trautv.) B.Mathew & Wendelbo XX-0-IB-022554

375 \*F\* Iris domestica (L.) Goldblatt & Mabb. XX-0-IB-018907

376 \*A\* Iris lutescens Lam. FR-0-IB-024965  
*W/FR-Provence-Alpilles Natural Regional Park-N 43°51'29", O 4°42'55"-123m*

377 \*A\* Iris paradoxa Steven AM-0-IB-019667  
*W/AM*

378 \*F\* Iris sibirica L. AT-0-IB-003740  
*W/AT-Tirol-Zirl- 600m*

379 \*F\* Iris vicaria Vved. XX-0-IB-003747

380 \*A\* Sisyrinchium montanum Greene var. crebrum Fernald XX-0-IB-003765

381 \*A\* Sisyrinchium patagonicum Phil. ex Baker XX-0-Z-20060506

382 \*A\* Solenomelus segethi (Phil.) Kuntze CL-0-BONN-33139  
*W/CL-Region Metropolitana, Parque Nacional El Morado, 1920-2030m*

### **Juncaceae**

383 \*F\* Juncus articulatus L. XX-0-IB-017398

384 \*F\* Juncus effusus L. XX-0-IB-017399

385 \*F\* Juncus inflexus L. AT-0-IB-018910  
*W/AT-Tirol-Nordtirol-Oberinntal-Flauring gegen Oberhofen-11° 6'48.10"E-47°17'27.6"N, 715m*

386 \*A\* Luzula luzuloides (Lam.) Dandy & Wilmott XX-0-IB-003786

387 \*F\* Luzula nivea (Nathh.) DC. XX-0-IB-017395

388 \*F\* Luzula sylvatica (Huds.) Gaudin subsp. sieberi (Tausch) K.Richt. AT-0-IB-018919  
*W/AT-Tirol-Nordtirol-Karwendel-Nordkette (Inntalkette)-Höttinger Graben unter- und oberhalb der Höttinger Alm-11°22'00"E-47°17'55"N, 1100-1700m*



## Lamiaceae

389	*F*	Ballota nigra L. <i>W/IT-Quercegrossa-Siena-2015 (Luglio 2017)</i>	IT-0-SIENA-02062
390	*F*	Betonica officinalis L.	XX-0-IB-003937
391	*G*	Clerodendrum splendens G.Don	XX-0-IB-006030
392	*F*	Clinopodium vulgare L. <i>W/AT-Tirol-Nordtirol-Karwendel-Nordkette (Inntalkette)-Innsbruck-Planötzenhof-Höttinger Graben-11°22'11"E-47°16'57"N, 900m</i>	AT-0-IB-018938
393	*F*	Galeopsis segetum Neck.	XX-0-IB-003823
394	*A*	Horminum pyrenaicum L.	AT-0-IB-003825
395	*F*	Hyssopus officinalis L.	XX-0-IB-003827
396	*A*	Hyssopus seravschanicus (Dubj.) Pazij <i>W/TJ-Pamir Gebirge-Schugnan Range-Darwas, 2600m</i>	TJ-0-GZU-08 700914
397	*F*	Lavandula angustifolia Mill.	XX-0-IB-003831
398	*F*	Leonurus cardiaca L.	XX-0-IB-003838
399	*F*	Marrubium vulgare L.	XX-0-IB-003843
400	*F*	Melissa officinalis L.	XX-0-IB-003844
401	*F*	Mentha longifolia (L.) L. <i>W/AT-Tirol-Nordtirol-Karwendel-Nordkette (Inntalkette)-Innsbruck-Planötzenhof-Höttinger Graben-11°22'11"E-47°16'57"N, 900m</i>	AT-0-IB-018970
402	*F*	Monarda citriodora Cerv. ex Lag.	XX-0-GZU-00 210036
403	*F*	Monarda didyma L.	XX-0-IB-003855
404	*A*	Nepeta argicola Bory & Chaub. subsp. vourinensis (Baden) Å.Strid & Kit Tan <i>W/AL-Tomorr</i>	AL-0-IB-019331
405	*A*	Nepeta podostachys Benth. <i>W/TJ-Gorno-Badakhshan-Western Pamir-S of the Koytezek pass (Pamir Highway)-E 72°45'21",N 37°29'4"- 4228m</i>	TJ-0-IB-021294
406	*F*	Ocimum basilicum L. `Genovese` cult.	XX-0-IB-003865
407	*A*	Origanum dictamnus L. <i>W/GR-Crete-Dikti Mt.-2000m</i>	GR-0-IB-019547
408	*A*	Origanum vulgare L. <i>W/AT-Tirol-Zirl-620m</i>	AT-0-IB-014269
409	*A*	Origanum vulgare L. subsp. gracile (K.Koch) letsw. <i>W/TJ-Gorno-Badakhshan-Panj valley-Kalaikhum village-70°47'17"E, 38°27'24"N-1279m</i>	TJ-0-IB-021296
410	*F*	Perilla frutescens (L.) Britt.	XX-0-IAGBXXX9812G
411	*F*	Phlomis fruticosa L. <i>W/AL-Tomor</i>	AL-0-IB-017266
412	*F*	Prunella grandiflora (L.) Scholler <i>W/AT-Tirol-Nordtirol-Karwendel-Nordkette (Inntalkette)Zirl-Fuß der Martinswand-11°16'40"E- 47°16'05"N, 700m</i>	AT-0-IB-018972
413	*F*	Prunella vulgaris L. <i>W/AT-Tirol-Nordtirol-Karwendel-Nordkette (Inntalkette)Zirl-Fuß der Martinswand-11°16'40"E- 47°16'05"N, 700m</i>	AT-0-IB-021496
414	*F*	Salvia austriaca Jacq.	XX-0-IB-021832
415	*G*	Salvia canariensis L.	XX-0-IB-009305
416	*F*	Salvia candelabrum Boiss.	XX-0-IB-021833
417	*A*	Salvia cyanescens Boiss. & Balansa <i>W/TR</i>	TR-0-IB-017812
418	*A*	Salvia dorrii (Kellogg) Abrams <i>W/US-California-Inyo Co.-3079m</i>	US-0-IB-025317
419	*A*	Salvia glutinosa L.	XX-0-IB-003895

420	*A*	Salvia nutans L. <i>W/RU- Voronezhskaya Oblast-Bogutshar Raion, neben dem Dorf Krasnogorovka, ca. 220 km SE von Voronezh</i>	RU-0-OSN-2018-1651
421	*F*	Salvia officinalis L.	XX-0-IB-003900
422	*F*	Salvia pratensis L. <i>W/AT-Kärnten-Drautal-Grafenstein, Saager-14°29'38.51"E-46°34'58.50"N, 500-600m</i>	AT-0-IB-018973
423	*A*	Salvia pratensis L. <i>W/AT-Tirol-Zirl-620m</i>	AT-0-IB-014310
424	*F*	Salvia sclarea L.	XX-0-IB-003893
425	*F*	Satureja hortensis L.	XX-0-PORTY-10748
426	*A*	Satureja montana L.	XX-0-IB-022856
427	*F*	Scutellaria alpina L.	XX-0-IB-019895
428	*G*	Scutellaria aurata Lem.	XX-0-IB-003916
429	*G*	Scutellaria coccinea Kunth	XX-0-BR-19720332
430	*A*	Sideritis scardica Griseb. <i>W/GR-Timfi-Micro Pagigo-Raitovoli</i>	GR-0-IB-016641
431	*A*	Stachys lavandulifolia Vahl. <i>W/IR-East Azerbaijan-along the road Bostanabad toTabriz-36 km SE of Tabriz-E 46°38'19" N 37°45'31"-2060m</i>	IR-0-IB-007827
432	*A*	Teucrium botrys L.	XX-0-IB-024629
433	*A*	Teucrium capitatum L. <i>W/GR-Macedonia-Edhessa-700m</i>	GR-0-IB-003942
434	*A*	Teucrium chamaedrys L. <i>W/AT-Tirol-Zirl-620m</i>	AT-0-IB-014290
435	*A*	Teucrium flavum L. <i>W/AL-Theth-900m</i>	AL-0-IB-003945
436	*A*	Teucrium orientale L. <i>W/GE-Samtskhe-Javakheti, between Borjomi and Bakuriani, near Tsagveri, 41°48,334' N, 43°28.648' E, app. 1000m</i>	GE-0-M-2012/2456
437	*A*	Thymus angustifolius Pers. <i>W/ME-Prokletije-Prokletije-Kuci-Brezovica-Mt. Zijevo-2000m</i>	ME-0-IB-014930

### Liliaceae

438	*A*	Lilium formosanum Wallace	XX-0-IB-010865
439	*F*	Lilium martagon L. <i>W/AT-Kärnten-Drautal-Grafenstein-Saager-14°29'38.51"E-46°34'58.50"N, 500-600m</i>	AT-0-IB-004010
440	*A*	Lilium pumilum Delile <i>W/RU-Baikal-Kadilua</i>	RU-0-IB-010065
441	*A*	Lilium regale E.H.Wilson	XX-0-IB-008041
442	*F*	Tulipa tarda Stapf	XX-0-IB-004043

### Linaceae

443	*A*	Linum alpinum Jacq. <i>W/SI-Gorenjska-Kamnicko-Savinjske Alpe-from below the hut Kamnicka koca na Kamnickem sedlu towards the summit of Brana-14°35'51"E-46°21'33"N, 1700-2200m (15.09.2018)</i>	SI-0-IB-022891
444	*A*	Linum capitatum Kit. ex Schult. <i>W/BA-Dinara-from the village Gubin to Mt. Veliki Troglav-1800m</i>	BA-0-IB-016827
445	*F*	Linum perenne L.	XX-0-IB-018979

- 446 \*A\* *Linum tenuifolium* L. HU-0-IB-021446  
*W/HU-Budapest-Sas hegy*
- 447 \*F\* *Linum usitatissimum* L. XX-0-IB-004055

**Loasaceae**

- 448 \*F\* *Blumenbachia hieronymi* Urb. XX-0-HAL-1126

**Lythraceae**

- 449 \*F\* *Lythrum salicaria* L. XX-0-IB-004066

**Malvaceae**

- 450 \*G\* *Abelmoschus esculentus* (L.) Moench XX-0-STUTZ-002733
- 451 \*G\* *Abutilon indicum* (L.) Sweet XX-0-IB-004083
- 452 \*G\* *Abutilon theophrasti* Medik. XX-0-BREMR-xxxx/3293
- 453 \*A\* *Alcea nudiflora* (Lindl.) Boiss. TJ-0-IB-021333  
*W/TJ-Gorno-Badakhshan-Panj valley-Kalaikhum village-70°47'17"E, 38°27'24"N-1279m*
- 454 \*F\* *Alcea rosea* L. XX-0-IB-004086
- 455 \*G\* *Gossypium herbaceum* L. XX-0-IB-004094
- 456 \*G\* *Hibiscus calyphyllus* Cav. XX-0-IB-015599
- 457 \*F\* *Malva neglecta* Wallr. XX-0-IB-004107
- 458 \*F\* *Malva sylvestris* L. XX-0-IB-004108
- 459 \*G\* *Pavonia spinifex* (L.) Cav. XX-0-IB-024475
- 460 \*G\* *Pentapetes phoenicea* L. XX-0-STUTZ-003383

**Marantaceae**

- 461 \*G\* *Ctenanthe lubbersiana* (E.Morren) Eichler ex Petersen XX-0-IB-019697
- 462 \*G\* *Maranta arundinacea* L. XX-0-IB-015681
- 463 \*G\* *Marantochloa leucantha* (K.Schum.) Milne-Redh. XX-0-IB-004122

**Melanthiaceae**

- 464 \*F\* *Paris quadrifolia* L. AT-0-IB-028552  
*W/AT-Tirol-Nordtirol-Inntal-Zirl-Ehnbachklamm-11°15'23.32"E-47°16'42.27"N, 837m*
- 465 \*F\* *Veratrum album* L. XX-0-IB-004125
- 466 \*A\* *Veratrum formosanum* O.Loes. TW-0-IB-004127  
*W/TW-Nantou-3000m*

**Melastomataceae**

- 467 \*G\* *Calvoa orientalis* Taub. XX-0-IB-004135

**Montiaceae**

- 468 \*A\* *Montiopsis umbellata* (Ruiz & Pav.) D.I.Ford XX-0-Z-20180248

**Myrtaceae**

- 469 \*G\* *Eugenia uniflora* L. XX-0-IB-004168
- 470 \*G\* *Psidium cattleianum* Afzel. ex Sabine XX-0-IB-004175
- 471 \*G\* *Psidium guajava* L. XX-0-IB-004174

### Onagraceae

- 472 \*A\* Clarkia bottae (Spach) F.R.Lewis & M.E.Lewis XX-0-NCY-20080035G  
473 \*A\* Epilobium dodonaei Vill. XX-0-IB-004262  
*W/AT-Tirol*  
474 \*F\* Epilobium hirsutum L. AT-0-IB-018986  
*W/AT-Tirol-Nordtirol-Unterinntal-Münster, südwestlich-11°50'39"E-47°25'2"N-520m*  
475 \*F\* Epilobium montanum L. AT-0-IB-026691  
*W/AT-Tirol-Nordtirol-Tuxer Alpen-Griesbergalm-Mäuerlscharte-11°32'E-47°00'N, 1950-2200m*  
476 \*F\* Oenothera biennis L. AT-0-IB-018987  
*W/AT-Tirol-Nordtirol-Oberinntal-Zirl-südwestlich Eigenhofen-11°11'38.2"E-47°16'52.5"N, 600m*

### Paeoniaceae

- 477 \*F\* Paeonia lactiflora Pall. KG-0-IB-019153  
*W/KG-Bishkek*  
478 \*A\* Paeonia officinalis L. IT-0-IB-004445  
*W/IT- Monte Baldo-1800m*

### Papaveraceae

- 479 \*F\* Chelidonium majus L. AT-0-IB-018994  
*W/AT-Tirol-Nordtirol-Stubaier Alpen-Westliches Mittelgebirge-Ranggen-Itzlranggen -11°14'55.7"E- 47°15'14.6"N, 680m*  
480 \*A\* Papaver alpinum L. CH-0-Bern-2010/212  
*W/CH-Berner Oberland-Alpengarten Schynige Platte*  
481 \*F\* Papaver orientale L. XX-0-IB-004490  
482 \*F\* Papaver rhoeas L. XX-0-PORTY-10295  
483 \*F\* Papaver somniferum L. XX-0-IB-004497

### Petiveriaceae

- 484 \*G\* Rivina humilis L. XX-0-IB-004526

### Plantaginaceae

- 485 \*F\* Digitalis ferruginea L. XX-0-IB-005702  
486 \*F\* Digitalis grandiflora Mill. AT-0-IB-018996  
*W/AT-Niederösterreich-Alpenostrand-Bad Vöslau, Harzberg, Jubiläumswarte-16°11'47"E-47°58'25"N, 480m (25.12.2017)*  
487 \*F\* Digitalis lanata Ehrh. XX-0-IB-025647  
488 \*A\* Digitalis lutea L. IT-0-IB-023169  
*W/IT-Mt. Leco-1030m*  
489 \*F\* Digitalis purpurea L. XX-0-IB-005710  
490 \*A\* Erinus alpinus L. XX-0-IB-005713  
491 \*A\* Globularia bisnagarica L. XX-0-IB-003597  
492 \*A\* Globularia cordifolia L. XX-0-IB-003594  
493 Globularia punctata Lapeyr. XX-0-IB-003599  
494 \*A\* Globularia repens Lam. ES-0-IB-024986  
*W/ES-Provinz Huesca-Cotiella, im Kar oberhalb der Hütte-N 42°31'6", O 0°19'55"- 2200m*  
495 \*A\* Globularia trichosantha Fisch. et C.A.Mey. TR-0-IB-003601  
*W/TR-Pelli-Dag-2200m*  
496 \*G\* Maurandya scandens (Cav.) Pers. XX-0-IB-021571

497	*F*	Penstemon cobaea Nutt. <i>ex US-Prairie Moon Nursery-Winona-Minnesota</i>	US-0-IB-019905
498	*A*	Penstemon grandiflorus Nutt.	XX-0-IB-017632
499	*A*	Penstemon pinifolius Greene	XX-0-IB-005795
500	*A*	Penstemon rydbergii A.Nelson <i>W/US-Washington-Chinook Pass-2500m</i>	US-0-IB-005801
501	*A*	Penstemon utahensis Eastw. <i>W/US-Utha-Grand Co.-Moab parking area, 2090ft</i>	US-0-BONN-38598
502	*A*	Penstemon venustus Douglas ex Lindl.	XX-0-IB-008985
503	*A*	Penstemon virens Pennell ex Rydb. <i>W/US-Colorado-Grand Co.-2561m</i>	US-0-IB-005783
504	*F*	Plantago indica L.	XX-0-SIENA-02040
505	*F*	Plantago lanceolata L.	XX-0-IB-004578
506	*F*	Plantago major L.	XX-0-IB-004579
507	*F*	Plantago ovata Forssk	XX-0-IB-025244
508	*A*	Plantago sempervirens Crantz	XX-0-IB-013848
509	*A*	Plantago sp. (from Tasmania) ? <i>W/AU-Tasmanien</i>	AU-0-IB-025894
510	*A*	Plantago strictissima L. <i>W/IT-Oberer Vinschgau-Mals-1000m</i>	IT-0-IB-024663
511	*A*	Plantago subulata L. <i>W/ES-Sierra Nevada, 2200m</i>	ES-0-ER-2006-41
512	*F*	Veronica officinalis L. <i>W/AT-Tirol-Nordtirol-Stubaier Alpen-Westliches Mittelgebirge-Inzing-Lehntal -11°12'13"E -47°15'48"N, 695 m</i>	AT-0-IB-019132
513	*A*	Veronica spicata L. <i>W/IT-Oberer Vinschgau-Vetzan-740m</i>	IT-0-IB-023192
514	*F*	Veronicastrum japonicum (Nakai) T.Yamaz.	XX-0-IB-025663
515	*A*	Wulfenia carinthiaca Jacq. <i>W/ME-Prokletije-Mt. Kërrshat e Mdhaj - Mt. Marjashi/Marijas</i>	ME-0-IB-016811
516	*P*	Wulfenia carinthiaca Jacq. <i>WAG/AT-Kärnten-Karnische Alpen-Gartnerkofel</i>	AT-0-IB-005863
<b><u>Plumbaginaceae</u></b>			
517	*A*	Acantholimon kotschyi (Jaub. & Spach) Boiss. <i>W/TR-Kütahya-1200m</i>	TR-0-IB-004595
518	*A*	Acantholimon ulicinum (Willd. ex Schult.) Boiss. var. purpurascens (Bokhari) Bokhari & J.R.Edm. <i>W/TR-Salda-1600m</i>	TR-0-IB-004597
519	*A*	Armeria alliacea (Cav.) Hoffmanns. & Link <i>W/IT-Monte Pietra di Corvo-Sassi Neri-1078m</i>	IT-0-GENT-19990597
520	*A*	Armeria alpina (DC.) Willd. <i>W/SI</i>	SI-0-STGAL-8722
521	*A*	Armeria canescens (Host) Boiss. <i>W/BA-Cvrsnica-Mt.Plocno-1000m</i>	BA-0-IB-014608
522	*F*	Armeria maritima (Mill.) Willd. <i>W/DE-Schleswig-Holstein, Insel Amrum, 2004, leg. Susanne Petersen</i>	DE-0-KIEL-2004 2869 - 10 - 55
523	*A*	Armeria maritima Girard ex Boiss. subsp. sibirica (Turcz. ex Boiss.) Nyman	XX-0-IB-004614

524	*A*	Armeria villosa Girard <i>W/ES-Sierra de Cazorla-Prov. Jaen-Sierra del Pozo-1km SE towards Pozo Alcon., 1410m</i>	ES-0-MB-1981/1776
525	*A*	Bukiniczia cabulica (Boiss.) Lincz. <i>W/PK-Swedish Expedition to Pakistan 1983, Acc: 2001-0334, CollNo: SEP 018</i>	PK-0-IB-019872
526	*A*	Dictyolimon macrorrhizos (Boiss.) Rech.f. <i>W/PK-Upper Hunza-Bature Glacier-2700m</i>	PK-0-IB-004619
527	*A*	Goniolimon callicomum (C.A.Mey.) Boiss. <i>W/KZ</i>	KZ-0-IB-023849
528	*A*	Goniolimon cuspidatum Gamajun. <i>W/KG</i>	KG-0-IB-023848
529	*A*	Limonium binervosum (G.E.Sm.) C.E.Salmon <i>W/FR</i>	FR-0-Z-20120277
530	*A*	Limonium gougetianum (Girard) Kuntze <i>WAH/HR-Mali Losinj</i>	HR-0-IB-004628

### Poaceae

531	*F*	Agrostis capillaris L. <i>W/AT-Tirol-Nordtirol-Stubaier Alpen-Westliches Mittelgebirge-Ranggen-Itzlranggen -11°14'55.7"E- 47°15'14.6"N, 680 m</i>	AT-0-IB-019008
532	*F*	Alopecurus pratensis L. <i>W/AT-Tirol-Nordtirol-Oberinntal-Talboden-Zirl-Richtung Martinsbühel-11°15'50.37"E-47°16'2.01"N, 590 m</i>	AT-0-IB-021644
533	*F*	Arrhenatherum elatius (L.) P.Beauv. ex J.Presl & C.Presl. <i>W/AT-Tirol-Nordtirol-Karwendel-Zirl-Eigenhofen-11°12'37.26"E-47°16'49.14"N, 620m</i>	AT-0-IB-019009
534	*F*	Avena sativa L.	XX-0-IB-004652
535	*F*	Avenella flexuosa (L.) Drejer <i>W/AT-Tirol-Nordtirol-Tuxer Alpen-Patscherkofel-W-Flanke oberhalb von Patsch-11°25'50"E-47°12'30"N, 1300-1800m</i>	AT-0-IB-019010
536	*A*	Bothriochloa ischaemum (L.) Keng <i>W/AT-Tirol-Zirl-620m</i>	AT-0-IB-014294
537	*F*	Bouteloua curtipendula (Michx.) Torr. <i>ex US-Prairie Moon Nursery-Winona-Minnesota</i>	US-0-IB-020171
538	*F*	Brachypodium sylvaticum (Huds.) P.Beauv. <i>W/AT-Tirol-Nordtirol-Karwendel-Nordkette (Inntalkette)-Innsbruck-Allerheiligen-11°21'00"E-47°16'28"N, 830m</i>	AT-0-IB-019011
539	*F*	Bromus erectus Huds. <i>W/AT-Tirol-Nordtirol-Karwendel-Zirl-Eigenhofen-11°12'51.6"E-47°16'50.8"N, 640m</i>	AT-0-IB-019012
540	*A*	Chondrosium gracile Kunth <i>W/US-South Dakota</i>	US-0-U-2002BL00753
541	*F*	Chrysopogon gryllus (L.) Trin.	XX-0-IB-020063
542	*F*	Dactylis glomerata L. <i>W/AT-Tirol-Nordtirol-Oberinntal-Zirl-südwestlich Eigenhofen-11°11'38.2"E-47°16'52.5"N, 600m</i>	AT-0-IB-019014
543	*F*	Deschampsia cespitosa (L.) P.Beauv. <i>W/AT-Tirol-Nordtirol-Tuxer Alpen-Patscherkofel-W-Flanke oberhalb von Patsch-11°25'50"E-47°12'30"N, 1300-1800m</i>	AT-0-IB-019015
544	*F*	Elymus athericus (Link) Kerguelen <i>W/AT-Tirol-Nordtirol-Oberinntal-Zirl-östlich Eigenhofen-11°11'33.5"E-47°16'50.5"N, 600m</i>	AT-0-IB-019016
545	*A*	Festuca amethystina L. <i>AT/Tirol-Nordtirol-Wetterstein-Mieminger Kette-WNW Henneberg-10°58'06"E-47°20'21"N, 1450m (21.10.2018)</i>	AT-0-IB-021312
546	*A*	Festuca gautieri (Hack.) K.Richt.	XX-0-IB-004688

547	*F*	<i>Festuca gigantea</i> (L.) Vill. <i>W/AT-Tirol-Nordtirol-Stubaier Alpen-Westliches Mittelgebirge-Inzing-Lehntal-11°12'13"E-47°15'48"N, 695 m</i>	AT-0-IB-021518
548	*F*	<i>Festuca heterophylla</i> Lam. <i>W/IT-Liguria-La Spezia-Monte Verrugoli-NNE of Biassa-9°45'51"E-44°6'14"N, 675 m</i>	IT-0-IB-019017
549	*F*	<i>Festuca nigrescens</i> Lam. <i>W/AT-Tirol-Nordtirol-Tuxer Alpen-Patscherkofel-W-Flanke oberhalb von Patsch-11°25'50"E-47°12'30"N, 1300-1800 m</i>	AT-0-IB-019018
550	*A*	<i>Festuca pallens</i> Host	XX-0-IB-023838
551	*A*	<i>Festuca paniculata</i> (L.) Schinz & Thell. <i>W/AT-Osttirol-Lienzer Dolomiten-Hochstadl</i>	AT-0-IB-026371
552	*A*	<i>Festuca pseudodura</i> Steud. <i>W/AT-Kärnten, Gurktaler Alpen, Rabenkofl</i>	AT-1-IB-017796
553	*A*	<i>Festuca pumila</i> Chaix <i>In/AT-Tirol-Nord Tirol-Tuxer Alpen- 47° 5'3.40"N, 11°38'36.85"E-2430m</i>	AT-0-IB-021414
554	*F*	<i>Festuca rupicola</i> Heuff. <i>W/AT-Tirol-Nordtirol-Karwendel-Zirl-Eigenhofen-11°12'51.6"E-47°16'50.8"N, 640m</i>	AT-0-IB-019019
555	*A*	<i>Festuca valesiaca</i> Schleich. ex Gaudin <i>W/IT-Südtirol-Vinschgau-Laas</i>	IT-0-IB-024621
556	*A*	<i>Helictotrichon sempervirens</i> (Vill.) Pilg.	XX-0-IB-025051
557	*F*	<i>Hordelymus europaeus</i> (L.) Jess. ex Harz <i>W/AT-Niederösterreich-Alpenostrand-Kalkwienerwald-Perchtoldsdorf-Umgebung der Kugelwiese-16°13'15"E-48°6'48"N, 562m</i>	AT-0-IB-021532
558	*F*	<i>Hordeum vulgare</i> L.	XX-0-IB-004712
559	*A*	<i>Koeleria vallesiana</i> (Honck.) Bertol. ex Schult. <i>W/FR-Elsaß-Rouffach</i>	FR-0-NGOET-2236
560	*F*	<i>Lolium perenne</i> L. <i>W/AT-Tirol-Nordtirol-Oberinntal-Zirl-östlich Eigenhofen-11°11'46.5"E-47°16'50.5"N, 600m</i>	AT-0-IB-019021
561	*A*	<i>Melica ciliata</i> L. <i>W/AT-Tirol-Prutz-Kaunerberg-1200m</i>	AT-0-IB-014234
562	*A*	<i>Melica ciliata</i> L. subsp. <i>monticola</i> (Prokudin) Tzvelev <i>W/GR - Timfi-Micro Pagigo-Raitovoli</i>	GR-0-IB-016635
563	*A*	<i>Melica nutans</i> L.	XX-0-IB-004721
564	*F*	<i>Molinia caerulea</i> agg. (L.) Moench <i>W/AT-Tirol-Nordtirol-Karwendel-Nordkette (Inntalkette)-Innsbruck-Allerheiligen-11°21'00"E-47°16'28"N, 830m</i>	AT-0-IB-019004
565	*A*	<i>Nassella tenuissima</i> (Trin.) Barkworth <i>W/US-Texas-2000m</i>	US-0-IB-018211
566	*F*	<i>Phalaris canariensis</i> L.	XX-0-IB-004740
567	*A*	<i>Phleum phleoides</i> (L.) H.Karst. <i>W/AT-Tirol-Oberperfuss-820m</i>	AT-0-IB-014268
568	*F*	<i>Phleum pratense</i> L. <i>W/AT-Tirol-Nordtirol-Stubaier Alpen-Westliches Mittelgebirge-Inzing-Lehntal-11°12'13"E-47°15'48"N, 695m</i>	AT-0-IB-019025
569	*F*	<i>Poa pratensis</i> L. <i>W/AT-Tirol-Nordtirol-Karwendel-Zirl-Eigenhofen-11°12'37.26"E-47°16'49.14"N, 620m</i>	AT-0-IB-019026
570	*A*	<i>Poa xerophila</i> Kerguélen <i>W/IT-Südtirol-Vinschgau-Obere Leiten-10°35'02"E-46°40'33"N-1221m, 06.08.2019</i>	IT-0-IB-025771
571	*F*	<i>Secale cereale</i> L.	XX-0-IB-019576
572	*A*	<i>Sesleria autumnalis</i> (Scop.) F.W.Schultz <i>W/GR-Pinthos-Aoos Gorge-700m</i>	GR-0-IB-018930

573	*A*	Sesleria caerulea (L.) Ard.	XX-0-IB-004756
574	*A*	Sesleria nitida Ten. <i>W/IT-Abruzzes-Gran Sasso</i>	IT-0-IB-026372
575	*A*	Sesleria rigida Heuff. ex Rchb. <i>W/RO-Transilvania-Brasov-Timpa-936m</i>	RO-0-IB-016809
576	*A*	Sesleria robusta Schott, Nyman & Kotschy <i>W/BA-Hercegovina-Dinara-Mt. Veliki Troglav-1915m</i>	BA-0-IB-014888
577	*A*	Sesleria skipetarum Ujhelyi <i>W/AL-Shkoder-Puke-along the road from Puke to Shkoder-300m</i>	AL-0-IB-016863
578	*F*	Setaria italica (L.) P. BEAUV.	XX-0-BREMR-xxxx/4833
579	*F*	Sorghum bicolor (L.) Moench	XX-0-ZAVRT-8019A
580	*A*	Stipa badachschanica Roshev. <i>W/TJ-Gorno-Badakhshan-Western Pamir-valley of Gunt river, village Vankala -E 72°10'42",N 37°42'12"- 3038m</i>	TJ-0-IB-021152
581	*F*	Stipa capillata L. <i>W/A-Tirol-Nordtirol-Oberinntal-Roppen-Kapelle NNE des Ortes-10°49'05"E-47°13'15"N, 740m</i>	AT-0-IB-019028
582	*A*	Stipa pennata agg. L.	XX-0-IB-004768
583	*A*	Trisetum distichophyllum (Vill.) P.Beauv. <i>W/AT-Tirol-Nord Tirol-Tuxer Alpen- 47° 5'3.40"N, 11°38'36.85"E-2430m</i>	AT-0-IB-021435
584	*F*	Triticum boeoticum Boiss.	XX-0-IB-021615
585	*F*	Triticum monococcum L.	XX-0-PORTY-11048
586	*F*	Zea mexicana (Schrad.) Kuntze	XX-0-IB-021614

#### **Polemoniaceae**

587	*A*	Ipomopsis rubra (L.) Wherry <i>W/US-Oklahoma</i>	US-0-TUEB-1528
588	*A*	Leptodactylon californicum Hook. & Arn. <i>W/US-California-Santa Barbara Co.-410m</i>	US-0-IB-004793
589	*F*	Polemonium caeruleum L.	XX-0-IB-004816

#### **Polygonaceae**

590	*A*	Eriogonum brevicaule Nutt. var. nanum (Reveal) S.L.Welsh <i>W/US-Utah</i>	US-0-IB-004835
591	*A*	Eriogonum pulchrum Eastw. <i>W/US-Arizona-1780m</i>	US-0-IB-008585
592	*A*	Eriogonum saxatile S.Watson <i>W/US-California-San Bernadino Co.-San Gabriel Mts.-Mt. San Antonio-29000m</i>	US-0-IB-021374
593	*A*	Eriogonum thymoides Benth. <i>W/US-Washington-Yakima Co.-762m</i>	US-0-IB-004853
594	*A*	Eriogonum umbellatum Torr. <i>W/US-Colorado-Jefferson Co.-South Table Mtn.-1859m</i>	US-0-U-2009BL01273
595	*F*	Fagopyrum esculentum Moench	XX-0-IB-020543
596	*F*	Persicaria bistorta (L.) Samp.	XX-0-IB-004830
597	*F*	Rheum palmatum L.	XX-0-IB-004875
598	*F*	Rheum rhabarbarum L.	XX-0-IB-004876
599	*F*	Rumex obtusifolius L.	XX-0-IB-004884
600	*F*	Rumex patientia L.	XX-0-IB-004885



### Primulaceae

601	*F*	Anagallis arvensis L.	XX-0-IB-004966
602	*A*	Androsace villosa L. subsp. koso-poljanskii (Ovcz.) Fed. <i>W/RU-Voronez</i>	RU-0-IB-017848
603	*A*	Dionysia involucreta Zapriag. <i>W/UZ-Hissar Range-1500m</i>	UZ-0-IB-005005
604	*A*	Dodecatheon clevelandii Greene ssp. patulum (Greene) H.J.Thomps. <i>W/US-Ventura Co., CA, 350ft, 107m</i>	US-0-IB-022101
605	*A*	Dodecatheon dentatum Hook.	XX-0-IB-018392
606	*F*	Dodecatheon meadia L.	XX-0-IB-009566
607	*A*	Lysimachia ephemereum L.	XX-0-IB-005018
608	*A*	Primula denticulata Sm.	XX-0-IB-026791
609	*A*	Primula minima L. <i>W/AT-Osttirol-Lienzer Dolomiten-Fuss des Hochstadel-46°45'06"N, 12°53'19"E, 1700m</i>	AT-0-IB-022183
610	*F*	Primula veris L.	XX-0-IB-005071

### Proteaceae

611	*G*	Macadamia intergrifolia Maiden & Betche	XX-0-IB-015950
-----	-----	---	----------------

### Ranunculaceae

612	*F*	Aconitum lycoctonum agg. L. <i>W/AT-Tirol-Nordtirol-Stubaier Alpen-Flauerling, Waldweg Richtung Westen-11° 6'42.44"E-47°17'28.49"N, 690m</i>	AT-0-IB-019057
613	*F*	Aconitum napellus L.	XX-0-IB-005096
614	*A*	Anemone altaica Fisch. ex C.A.Mey.	XX-0-IB-010105
615	*A*	Anemone multifida Poir. <i>W/CA-British Columbia-White Rocks</i>	CA-0-IB-005118
616	*A*	Anemone obtusiloba D.Don <i>W/NP-Samdo-3800m</i>	NP-0-IB-005122
617	*A*	Anemone rupicola Cambess.	XX-0-IB-025994
618	*A*	Aquilegia bertolonii Schott <i>W/BA-Mt. Veliki Vilinac-1700m</i>	BA-0-IB-014868
619	*A*	Aquilegia canadensis L.	XX-0-IB-018412
620	*A*	Aquilegia desertorum (M.E.Jones) Cockerell ex A.Heller	XX-0-IB-005142
621	*A*	Aquilegia ottonis Orph. ex Boiss. subsp. amaliae (Heldr. ex Boiss.) Strid <i>W/GR-Mt. Olymp-1980m</i>	GR-0-IB-016846
622	*A*	Aquilegia pyrenaica DC. <i>W/FR-Pyrenäen- 2000m</i>	FR-0-IB-005152
623	*F*	Clematis recta L.	XX-0-IB-005179
624	*A*	Clematis scottii Porter <i>W/US-Colorado</i>	US-0-IB-005183
625	*A*	Clematis songorica Bunge <i>W/KZ-Almaty-Charyn Canyon-at western entrance of Valley of Castles-1120m</i>	KZ-0-IB-005172
626	*F*	Consolida regalis Gray	XX-0-IB-005187
627	*F*	Delphinium exaltatum Aiton <i>ex US-Prairie Moon Nursery-Winona-Minnesota</i>	US-0-IB-019760
628	*F*	Nigella damascena L.	XX-0-IB-005218

629	*F*	Ranunculus acris L. <i>W/AT-Tirol-Nordtirol-Karwendel-Zirl, Eigenhofen-11°12'48.4"E-47°16'48.7"N,610m</i>	AT-0-IB-019042
630	*F*	Ranunculus montanus Willd. <i>W/AT-Tirol-Nordtirol-Karwendel-Nordkette (Inntalkette)-Höttinger Graben unter- und oberhalb der Höttinger Alm-11°22'00"E-47°17'55"N, 1100-1700m</i>	AT-0-IB-019046
631	*F*	Thalictrum aquilegifolium L. <i>W/AT-Tirol-Nordtirol-Karwendel-Nordkette (Inntalkette)-Mühlauerklamm-11°24'56.10"E- 47°17'30.32"N, 747m</i>	AT-0-IB-028556
632	*F*	Thalictrum minus L. <i>W/AT-Tirol-Nordtirol-Karwendel-Zirl, Eigenhofen-11°12'51.6"E-47°16'50.8"N,640m</i>	AT-0-IB-019060
633	*F*	Trollius europaeus L. <i>W/AT-Tirol-Nordtirol-Stubaier Alpen-Flauerling, südwestlicher Ortsrand-11° 6'59.73"E-47°17'22.97"N, 715m</i>	AT-0-IB-019051

### **Resedaceae**

634	*F*	Reseda lutea L.	XX-0-IB-005287
-----	-----	-----------------	----------------

### **Restionaceae**

635	*F*	Thamnochortus insignis Mast.	XX-0-IB-019063
-----	-----	------------------------------	----------------

### **Rosaceae**

636	*F*	Agrimonia eupatoria L.	XX-0-IB-005308
637	*F*	Alchemilla nitida Buser <i>W/AT-Tirol-Nordtirol-Karwendel-Nordkette (Inntalkette)-Rauschbrunnen-Aspachhütte-11°20'5"E-47°17'3"N, 1300-1750m</i>	AT-0-IB-019069
638	*A*	Amelanchier ovalis Medik.	XX-0-IB-005318
639	*A*	Chamaebatiaria millefolium (Torr.) Maxim. <i>W/US-Nevada-White Pine Co.-2500m</i>	US-0-IB-005325
640	*A*	Coluria geoides (Pall.) Ledeb. <i>W/KZ-Altai-Belukha-1200m</i>	KZ-0-IB-005327
641	*A*	Dryas drummondii Richardson ex Hook. <i>W/US-Alaska</i>	US-0-IB-005342
642	*A*	Dryas octopetala L.	XX-0-IB-005343
643	*A*	Filipendula palmata (Pall.) Maxim. <i>W/KR</i>	KR-0-IB-005349
644	*F*	Filipendula vulgaris Moench	XX-0-IB-019072
645	*F*	Geum rivale L. <i>W/AT-Tirol-Nordtirol-Stubaier Alpen-Flauerling-Waldweg Richtung Westen-11° 6'42.44"E-47°17'28.49"N, 690m</i>	AT-0-IB-019075
646	*F*	Geum urbanum L. <i>W/AT-Tirol-Nordtirol-Stubaier Alpen-Westliches Mittelgebirge-Axams, Bachl-11°15'52.9"E-47°14'9.4"N,840m</i>	AT-0-IB-019074
647	*A*	Gillenia trifoliata L.	XX-0-WU-0021974
648	*G*	Marcetella moquiniana (Webb et Berthel.) Svent. <i>W/ES-Canary Islands</i>	ES-0-IB-014748
649	*A*	Petrophytum caespitosum (Nutt. ex Torr. & A.Gray) Rydb.	XX-0-IB-005388
650	*A*	Potentilla concinna Richardson <i>W/US-Utah-Summit Co.-2100m</i>	US-0-IB-018268
651	*A*	Potentilla cuneata Wall. <i>W/NP-Samdo-3800m</i>	NP-0-IB-021447
652	*A*	Potentilla megalantha Takeda	XX-0-IB-007759

653	*A*	Potentilla multifida L. <i>W/TJ-Gorno-Badakhshan-Western Pamir-8.5 km NNW Dzhiland (Djelondi)-E 72°32'34",N 37°38'23"- 3544m</i>	TJ-0-IB-021076
654	*A*	Potentilla nepalensis D.Don	XX-0-IB-005415
655	*A*	Potentilla pulvinaris Fenzl	XX-0-IB-005413
656	*A*	Potentilla villosa Pall. ex Pursh <i>W/CA-British Columbia</i>	CA-0-IB-005424
657	*F*	Rosa agrestis Savi <i>W/IT-Oberer Vinschgau-Tartscher Bühel-ca. 1200m</i>	IT-0-IB-014289
658	*A*	Sarcopoterium spinosum (L.) Spach <i>WAH/GR-Kreta</i>	GR-0-IB-018040
659	*A*	Sorbus cashmiriana Hedl.	XX-0-IB-010185

#### Rubiaceae

660	*G*	Coffea arabica L.	XX-0-IB-005490
661	*F*	Phuopsis stylosa (Trin.) Hook.f. ex B.D.Jacks.	XX-0-IB-006420
662	*A*	Plocama calabrica (Radcl.-Sm.) M.Backlund & Thulin <i>WAH/GR-Korfu- Pantokrator 650m</i>	GR-0-IB-018071

#### Rutaceae

663	*G*	Cneorum tricoccon L.	XX-0-IB-002594
664	*F*	Dictamnus albus L.	XX-0-IB-005513
665	*F*	Ruta graveolens L.	XX-0-IB-005525

#### Saxifragaceae

666	*A*	Astilbe rubra Hook.f. & Thomson	XX-0-IB-005555
667	*A*	Boykinia rotundifolia Parry ex A.Gray	XX-0-IB-005568
668	*A*	Heuchera elegans Abrams <i>W/US-Kalifornien-1100m</i>	US-0-IB-008383
669	*A*	Heuchera parviflora Bartl. var. nivalis (Rosend., Butters & Lakela) Á. Löve, D. Löve & B.M. Kapoor <i>W/US-Colorado-Lake Co.-3900m</i>	US-0-IB-018265
670	*A*	Micranthes pensylvanica (L.) Haw.	XX-0-GZU-YY 210072
671	*A*	Saxifraga bronchialis L. <i>W/RU-Sibirien-Region Burjatien-Svyatoy Nos-Ust-Barguzin</i>	RU-0-IB-021298
672	*A*	Saxifraga cartilaginea Willd. <i>W/GE-Svaneti-Tsana-rocks along the road to Lentekhi-N 42° 51.497,E 43° 09.869-1496m</i>	GE-0-IB-023164
673	*A*	Saxifraga cochlearis Rchb. 'Minor' cult.	XX-0-IB-026377
674	*A*	Saxifraga cotyledon L. <i>W/IT-S-Alpen-2000m</i>	IT-0-IB-022036
675	*A*	Saxifraga crustata Vest <i>W/IT-Julische Alpen-Sella Nevea-Mt.Sart-Bela Pec-1800-2300m</i>	IT-0-IB-014588
676	*A*	Saxifraga hostii Tausch	XX-0-IB-005630
677	*A*	Saxifraga hostii Tausch subsp. hostii Tausch <i>W/IT-Julische Alpen-Sella Nevea-Mt.Sart-Bela Pec-1800-2300m</i>	IT-0-IB-014589
678	*A*	Saxifraga hostii Tausch subsp. rhaetica (A.Kern.) Braun-Blanq.	XX-0-IB-005631
679	*A*	Saxifraga media Gouan <i>W/AN-La Massana-Pal</i>	AN-0-IB-022328
680	*A*	Saxifraga paniculata Mill.	XX-0-IB-005644

- 681 \*A\* Saxifraga pedemontana All. subsp. cervicornis (Viv.) Engl. IT-0-IB-005646  
*W/IT-Sardienien*
- 682 \*A\* Saxifraga sancta Griseb. subsp. pseudosancta (Janka) Kuzmanov XX-0-IB-009025
- 683 \*A\* Saxifraga scleropoda Sommier & Levier. RU-0-IB-007581  
*W/RU-Kaukasus-Ceget-3100m*

#### Scrophulariaceae

- 684 \*F\* Scrophularia nodosa L. XX-0-IB-005812
- 685 \*F\* Verbascum densiflorum Bertol. XX-0-IB-007280
- 686 \*A\* Verbascum longifolium Ten. MN-0-IB-016756  
*W/MN-Visitor-Prokletije*
- 687 \*F\* Verbascum nigrum L. XX-0-IB-019138

#### Solanaceae

- 688 \*F\* Atropa bella-donna L. AT-0-IB-005871  
*W/AT-Tirol-Nordtirol-Stubaier Alpen-Westliches Mittelgebirge-Natterer Boden-11°22'50.07"-47°14'28.71"N, 840m (17 04 2019)*
- 689 \*G\* Capsicum annuum L. var. glabriusculum (Dunal) Heiser & Pickersgill XX-0-BERN-2010/116 G S
- 690 \*G\* Capsicum pubescens Ruiz & Pav. 'Rocoto' cult. XX-0-Stutz-008484
- 691 \*F\* Datura stramonium L. XX-0-IB-005885
- 692 \*F\* Nicandra physalodes (L.) Gaertn. XX-0-IB-005898
- 693 \*F\* Nicotiana rustica L. XX-0-IB-005901
- 694 \*F\* Nicotiana tabacum L. XX-0-IB-005902
- 695 \*A\* Schizanthus grahamii Gillies AR-0-IB-005907  
*W/AR-Las Lenas*
- 696 \*G\* Solanum betaceum Cav. XX-0-IB-005883
- 697 \*G\* Solanum uporo Dunal XX-0-IB-018636

#### Thymelaeaceae

- 698 \*A\* Daphne kosaninii (Stoj.) Stoj. BG-0-IB-005951  
*W/BG-Pirin Mts., 2200m*
- 699 \*A\* Daphne kurdica (Bornm.) Bornm. TR-0-IB-005953  
*W/TR-Ala-Dag-2000m*
- 700 \*A\* Daphne x reichsteinii Landolt & E. Hauser IT-0-IB-005963  
*W/IT-Gardasee*

#### Tofieldiaceae

- 701 \*A\* Tofieldia calyculata (L.) Wahlenb. AT-0-IB-004035  
*W/AT-Tirol-Karwendel*

#### Tropaeolaceae

- 702 \*F\* Tropaeolum majus L. XX-0-IB-015215

#### Typhaceae

- 703 \*A\* Typha minima Funck AT-0-IB-017766  
*W/AT-Lechtal*

#### Urticaceae

- 704 \*G\* Boehmeria macrophylla Hornem. XX-0-IB-005990

705 \*G\* Boehmeria nivea (L.) Gaudich.

XX-0-IB-005991

**Verbenaceae**

706 \*G\* Phyla scaberrima (Juss. ex Pers.) Moldenke

XX-0-IB-019652

707 \*A\* Verbena macdougalii A.Heller  
*W/US-Arizona-Grand Canyon*

US-0-GZU-01/420720

**Xanthorrhoeaceae**

708 \*A\* Asphodeline lutea (L.) Rchb.

XX-0-IB-017467

709 \*A\* Asphodeline taurica (Pall.) Endl.

XX-0-IB-000710

710 \*F\* Asphodelus albus Mill.

XX-0-IB-000712

711 \*F\* Eremurus robustus (Regel) Regel

XX-0-IB-000722

**Zingiberaceae**

712 \*G\* Alpinia zerumbet (Pers.) B.L.Burtt & R.M.Sm.

XX-0-IB-006077

## Botanischer Garten Innsbruck / Botanical Garden Innsbruck

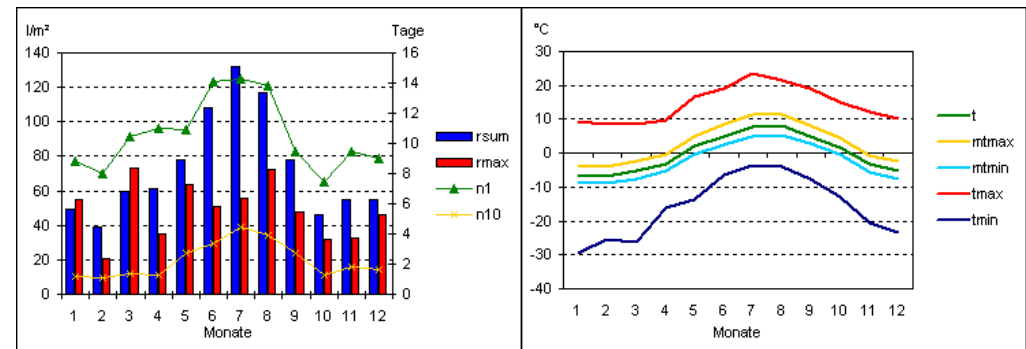
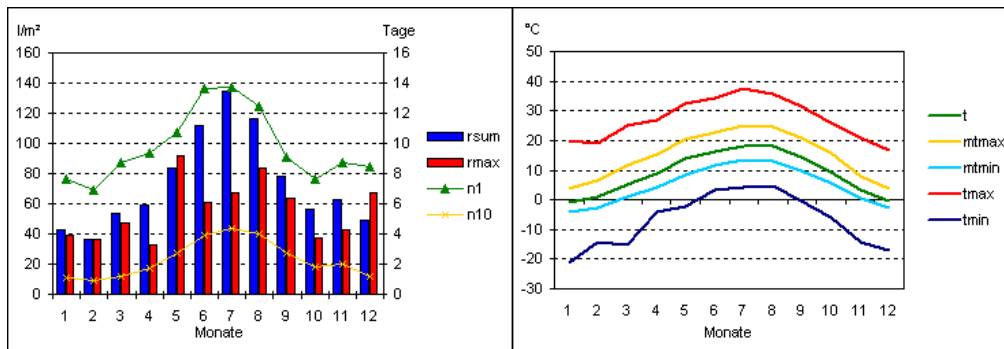


Gartenfläche / Size of the garden	2 ha
Schaugewächshäuser / Public greenhouses	759 m <sup>2</sup>
Geografische Lage / Geographical data	47° 16' 4" N 11° 22' 46" E
Meereshöhe / Altitude	611 m

## Alpengarten am Patscherkofel / Alpine Garden on Mt. Patscherkofel



Gartenfläche / Size of the garden	2 ha
Forschungsstation / Research station	130 m <sup>2</sup>
Geografische Lage / Geographical data	47° 12' 38" N 11° 27' 4" E
Meereshöhe / Altitude	1945 m



## Samenbestellung

**Bestellungen nur bis 31. März 2022**

Wegen des hohen Verwaltungsaufwandes können wir leider kein Pflanzen Gesundheitszeugnis ausstellen.

Seit Inkrafttreten des Übereinkommens über die Biologische Vielfalt (CBD, Rio de Janeiro, 1992) ergibt sich für Botanische Gärten und vergleichbare Sammlungen, besonders im Zusammenhang mit dem Austausch von pflanzlichem Material, die Notwendigkeit zur Beachtung insbesondere des Artikels 15 der CBD (Zugang zu genetischen Ressourcen). Zur Umsetzung dieses Artikels existiert seit fast 10 Jahren das Internationale Pflanzen Austausch Netzwerk (IPEN). Es dient dem vereinfachten Austausch von Saatgut und ausschließlich Botanische Gärten können daran teilnehmen. Das Saatgut darf nicht für kommerzielle Zwecke genutzt werden.

Sollten Sie kein IPEN-Mitglied sein, ist die Vereinbarung auf der folgenden Seite zu verwenden.

Für IPEN-Teilnehmer entfällt die Unterschrift.

Botanischer Garten und Alpengarten des Instituts für Botanik

Sternwartestraße 15

A – 6020 Innsbruck

Austria

E-Mail: [Botanischer-Garten@uibk.ac.at](mailto:Botanischer-Garten@uibk.ac.at)

URL: [www.uibk.ac.at/botany/botanical\\_gardens](http://www.uibk.ac.at/botany/botanical_gardens)

## Seed order

**Orders only until March, 31, 2022**

We regret being unable to provide a phytosanitary certificate due to the administrative complications involved.

In accordance with the [Convention on Biological Diversity](#) (Rio de Janeiro, 1992) Botanical Gardens have to adhere to Article 15 (Access to genetic resources). Therefore the International Plant Exchange Network (IPEN) has been established so that Botanical Gardens can easily exchange seeds. Only Botanical Gardens are allowed to participate and seeds are not to be used for commercial purposes (<https://www.bgci.org/our-work/policy-and-advocacy/access-and-benefit-sharing/the-international-plant-exchange-network/>).

Those Botanical Gardens not yet participating in [IPEN](#) have to sign the agreement on the next page.

IPEN members do not have to sign the agreement.

## Agreement on the supply of living plant material for non-commercial purposes leaving the International Plant Exchange Network

Against the background of the Convention on Biological Diversity (“CBD”) and the Nagoya Protocol on Access to Genetic Resources and the Fair and Equitable Sharing of Benefits Arising from their Utilization to the Convention on Biological Diversity, the Botanical Garden of the University of Innsbruck is dedicated to promoting the conservation, sustainable use, and research of biological diversity. The Botanical Garden of the University of Innsbruck (the “supplier”) therefore expects its partners in acquiring, maintaining, and transferring plant material to always act in accordance with the CBD, the Nagoya Protocol and the Convention on the International Trade in Endangered Species (CITES).

The responsibility for legal handling of the plant material listed below passes on from the supplier to the recipient upon receipt of the material. The following conditions apply:

1. The recipient may use the supplied plant material, progeny or derivatives only for non-commercial purposes such as scientific study, education and conservation. Should the recipient at a later date intend a commercial use or a transfer to third parties for commercial use, the country of origin’s prior informed consent (PIC) must be obtained in writing before the material is used or transferred.
  2. The recipient is responsible for ensuring an equitable sharing of benefits in accordance with the CBD and the Nagoya Protocol.
  3. The recipient must keep all information on the received plant material, including its origin (supplier, country of origin, year of collection) and the IPEN number, as well as the terms and conditions in a comprehensible manner.
  4. In the event that scientific publications are produced based on the supplied plant material, the recipient is obliged to indicate in those publications the origin of the material (the supplying garden and, if known, the country of origin) as well as the IPEN number. The recipient shall send a copy of these publications to the supplier.
  5. On request, the supplier will forward relevant information on this transfer of the plant material to the body charged with implementing the Nagoya Protocol (usually the competent national authority in the SUPPLIER’s home country).
  6. The recipient may transfer the received plant material, its progeny or derivatives only for non-commercial use to bona fide third parties. Such transfer to third parties must be under the terms and conditions of this agreement, including the obligation to keep, cite and transfer the IPEN number. The recipient must document the transfer in a suitable manner.
- 

I accept the above conditions.

Date, Signature

Recipient’s name and address, stamp

We want to inform you that Austria is not putting restrictions on the use of material originating from its territory in the context of the Nagoya Protocol of the Convention on Biological Diversity (CBD). Nevertheless we would appreciate any information about uses of material distributed by us.



Ausstellung - Exhibition

[„Gleis 1 Biodiversität unterwegs  
- Binario 1 Biodiversità in transito“](#)

[„Kunst im öffentlichen  
Raum: Moss - a kinetic sound  
sculpture“](#)



Ausstellung - Exhibition

[„Von Einzelgängern und  
Geselligen – Vielfalt der  
Wildbienen“](#)

„BOTANICA 2021“



 Find us on  
**Facebook**

