

WS23: Entwerfen 1

2023 Winter Semester: Design Studio

Institute of Urban Design, Univ.- Prof. Dr. Peter Trummer, M.Sc

superfluous studio:

SOFT-SERVE: HERITAGE PLAZA

previous studios



Instructors: Simeon Brugger
contact@formerlynotknown.com

Tutor: Xaver Roos
roosxaver99@gmail.com

Meetings: Wednesdays & some Thursdays
@ 9:00-17:00
(detailed schedule will be handed out first day)



CHIMERA 1988 Lynda Benglis

1: STUDIO DESCRIPTION

This semester Superfluous Studio will investigate recreational plazas through an exploration of melting candle wax models which will be essential to the design method. The aim of the studio will be to design a pedestrian plaza in the Heritage district of greater Los Angeles, where Heritage Square Museum resides. Currently, there exists a sharp border between residential, commercial and cultural programs and proportionally large open parking lots. With the expansion of the Metro line there is a new need of pedestrian access to be met. And to understand and answer to this pedestrian potential of the historical district the students will be asked to design an open-air mixed-use plaza for cultural and recreational usage. This plaza will be an area that can be used by local residents, the general public, office workers, students as well as institutional workers.

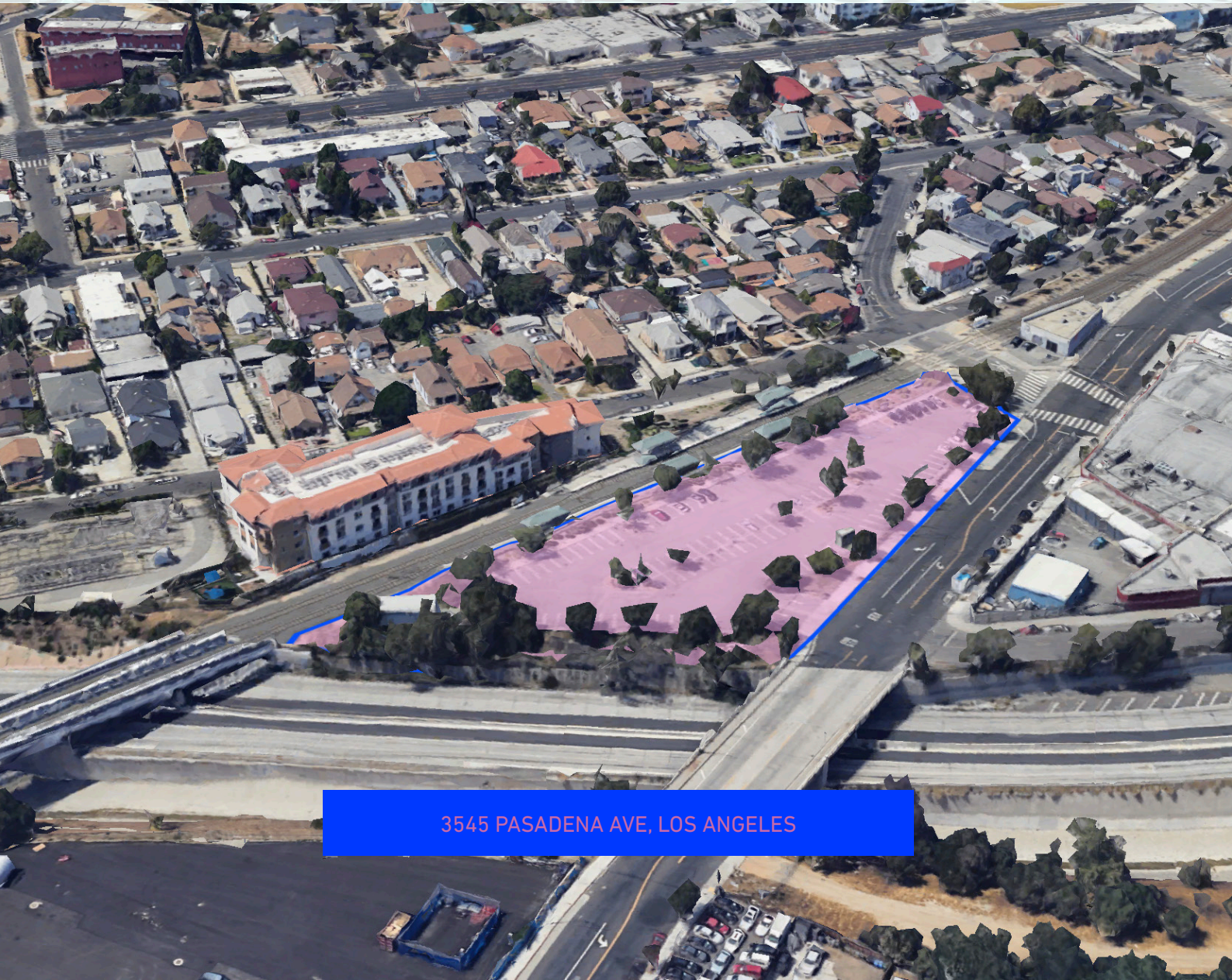
The infrastructural focus of the design process will be to produce easy accessibility from various streets and the new metro station for pedestrians and to design a place for gathering that allows the existing programs on the project site to function as they previously did with the integration of new interwoven public spaces, and semi-private architectural programs. The main focus of the design process will be to reallocate the private open-air parking lots which create temporarily useless pockets of space for pedestrians within the city of Los Angeles and redesign these areas as public plazas for recreational usage.

2: COURSE ORGANIZATION & DESIGN PROCESS

The course will be held in English and the students will be working in teams of 2 or 3. The teams will be asked to observe, analyze and configure designated buildings and architects from the general Los Angeles area and get acquainted with the method of collecting architectural information. The collection process will result in a digital library of 3D models, 2D drawings, lines, forms, images, etc. This library will then be utilized for the architectural production and design process.

This semester Soft-Serve: Heritage Plaza will initially explore the method of hybrid drawings, as well as translations of this initial drawing to 3D candle model forms and redigitalisation of the melted forms via 3D scanning. During the course there will often be exercises of "paint-by-numbers" style of a design method in order to bring forth discussions on assigning architectural information when developing form vs. shape, line vs. surface, image vs. object, content vs. container, ground vs. figure as well as landscape vs. architecture.

The design process will consist of several tasks and steps which will be introduced in the first class. Through various steps, the students will be asked to construct and imagine formerly not investigated urban applications. The general aim of the studio is to develop an understanding of previously existing architectural, urban and graphic information generally available in cities in order to develop new and complex urban relationships within the existing contexts.



3545 PASADENA AVE, LOS ANGELES



3: SITE

The site chosen for this semester's studio is an open parking lot that is directly adjacent to the recently expanded Gold Line Heritage Square Metro station. Currently the metro station is 25-35 minutes away from the Heritage Square Museum by foot. Additionally due to the need for parking attached to infrastructural buildings, the adjacent parking lot is only used during peak transportation hours and otherwise are left empty. With the development of better public transportation and countless rideshare possibilities, the parking lots within Los Angeles and especially in this district of Heritage act as an obstacle to the pedestrian movement and gathering places rather than practical architectural programs.

The Heritage Square Museum located in between Cypress Park and Montecito Heights of Los Angeles contains 8 Victorian-era buildings from the 19th century that were saved during demolition throughout the years and transported to their current home. To some extent they represent one of the oldest architectural heritage of Los Angeles. Therefore the project site will be an opportunity for the students to respond to this need of public space in this district that was recreated to represent history and culture of the city.