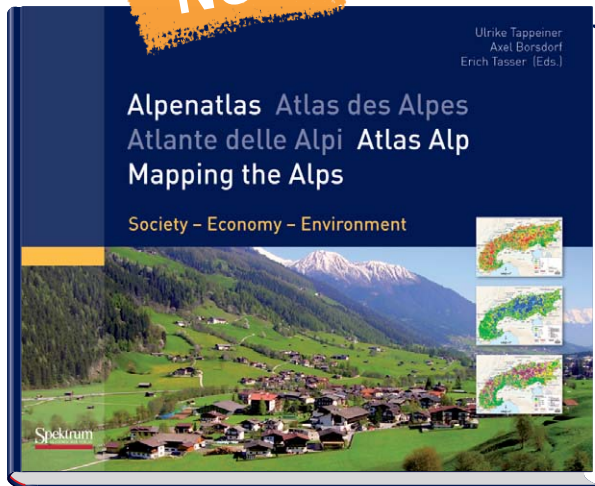


# Large-format thematic atlas of the Alpine Space

www.spektrum-verlag.de

A unique stock-taking of your region

New!



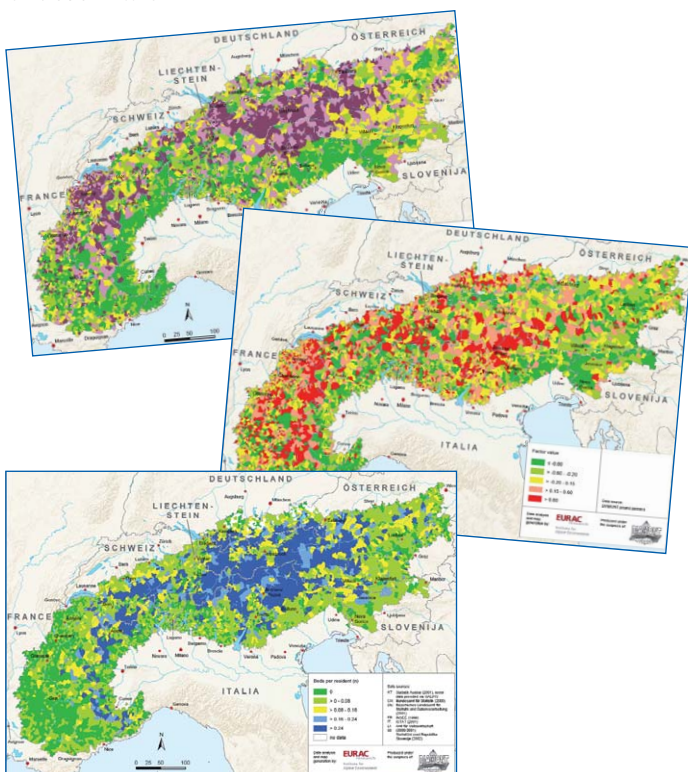
- ▶ Everything you need to know on social, economic, environmental and many other topics
- ▶ In 4 colours and 5 languages

The Alps are the largest and most significant high mountain area in Europe and the starting point for numerous debates on transit traffic, climate change, tourist trends or the impact of a global market economy, to name but a few. What has been lacking so far is a sound basis of cross-national data, as well as comparative maps generated from such a basis. Editors Ulrike Tappeiner, Axel Borsdorf and Erich Tasser, together with well-known experts and practitioners from the respective nation states, were thus confronted with the task of compiling an up-to-date and solid basis of information that would support stakeholders from the fields of research, politics and the economy in dealing with issues and decisions involving the Alpine region. This is how "Mapping the Alps" came about. It contains more than 100 four-colour, pan-Alpine maps on social, economic, and environmental aspects.

Topics such as the employment situation, settlement trends, landscape fragmentation and the labour market situation are represented by several indicators and interpreted by experts in 5 languages (German, French, Italian, Slovene and English).

Tappeiner, Ulrike; Borsdorf, Axel; Tasser, Erich (Hrsg.)  
**Mapping the Alps**

First publ. 2008, 292pp., hard cover  
€ (D) 49,95 / € (A) 51,35 / CHF 81,50  
ISBN 978-3-8274-2004-6



## The topics:

**Background.** Site characteristics; administrative structure; settlement situation; accessibility.

**Society.** Demography; household structure; family structure; education; participation.

**Economy.** Business structure; labour market situation; female employment; commuter flows; sectoral distribution of jobs; services; tourism; agricultural structure.

**Environment.** Land cover; anthropogenic influence; landscape diversity; landscape fragmentation; protected areas.

**Aggregated features.** Aggregated environmental features; Aggregated social features; Aggregated economic features; Labour Market Regions; Land Demand; Regions of Similar Development .

## Order now!

▶ Mapping the Alps is available in book shops or directly from the publishers:  
▶ Tel.: + 49 6221 345-0

▶ Fax: + 49 6221 345-4229  
▶ Mail: SDC-bookorder@springer.com

... Further information and online ordering on [www.spektrum-verlag.de](http://www.spektrum-verlag.de)

**Spektrum**  
AKADEMISCHER VERLAG